

C&K ZMA Series Subminiature Snap-acting Switches



Features/Benefits

- **Reliable snap-acting mechanism**
- **Long electrical and mechanical life**
- **Compact size—Ideal when space is limited**
- **Various PCB terminals and actuators**
- **RoHS compatible**

Typical Applications

- **PCB detection switch**
- **Communication devices**
- **Testing equipment**
- **Security/Alarm systems**
- **Consumer electronics**



Models Available

Specifications

CONTACT RATING: 3A @ 125 V AC / 0.1A @ 30 V DC.
 ELECTRICAL LIFE: 300,000 cycles @ 0.1A / 10,000 cycles @ 3A.
 INSULATION RESISTANCE: 100 M ohm min.
 DIELECTRIC STRENGTH: 500 Vrms.
 OPERATING TEMPERATURE: -17°F to 185°F (-25°C to 85°C).
 OPERATING FORCE: 80 or 150 grams.

* Low Level=conditions where no arcing occurs during switching, i.e., 0.4 VA max.
 @ 20 V AC or DC max.

Materials

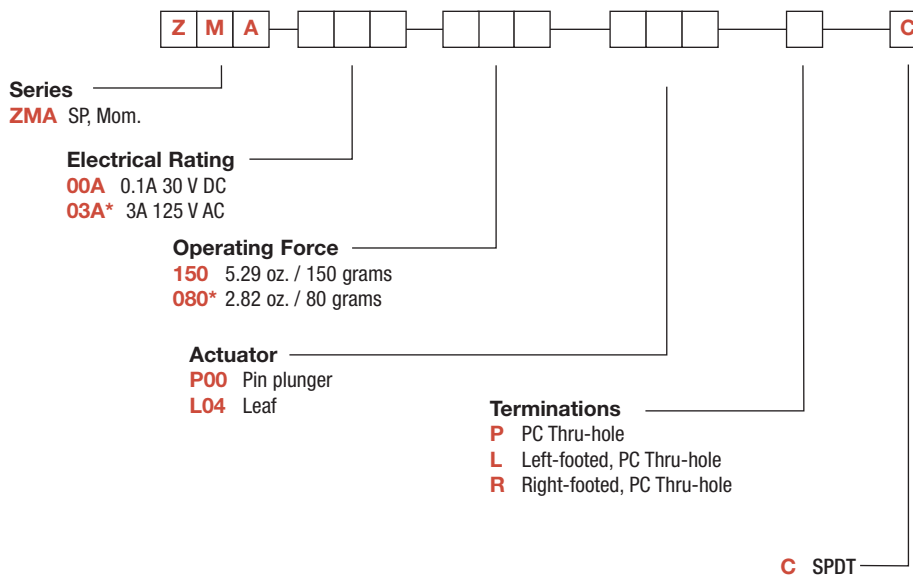
CASE: PBT
 COVER/ACTUATOR: Nylon 6/6
 MOVABLE CONTACTS: Silver or gold plated.
 STATIONARY CONTACTS: Silver or gold plated.
 TERMINALS: Brass, tin plated.

NOTE: For the latest information regarding RoHS compliance, please go to: www.ittcannon.com/rohs.

NOTE: Specifications and materials listed above are for switches with standard options. For information on specific and custom switches, consult Customer Service Center.

Build-A-Switch

To order, simply select desired option from each category and place in the appropriate box. Available options are shown and described on pages F-18 and F-19. For additional options not shown in catalog, consult Customer Service Center.



*Electrical rating 03A is not available with Operating Force rating of 080.



Detect

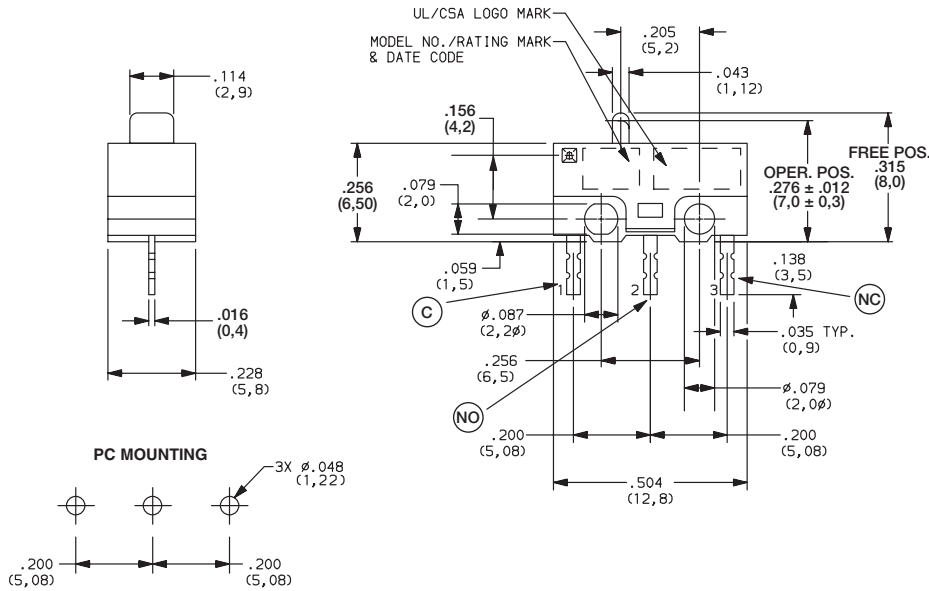


Dimensions are shown: Inch (mm)
 Specifications and dimensions subject to change

C&K ZMA Series Subminiature Snap-acting Switches

SERIES **ZMA**

ZMA SUBMINIATURE SNAP-ACTING SWITCHES – SP MOMENTARY



ZMA03A150L04PC
SPDT

ELECTRICAL RATING

OPTION CODE	CONTACT MATERIAL		ELECTRICAL RATING
	MOVABLE CONTACT	STATIONARY CONTACT	
00A	GOLD OVER FINE SILVER	GOLD OVER FINE SILVER	0.1 AMP @ 30 V DC
03A*	FINE SILVER	FINE SILVER	3 AMPS @ 125 V AC

All models with all options.

Consult Customer Service center for availability and delivery of nonstandard ratings.

*Electrical rating 03A is not available with Operating Force rating of 080.

OPERATING FORCE

OPTION CODE	BASIC SWITCH OPERATING FORCE (OZ./GRAMS)
150	5.29 150
080*	2.82 80

*Electrical rating 03A is not available with Operating Force rating of 080.



F

Detect



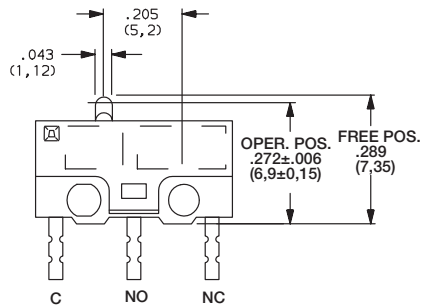
Third Angle Projection
Dimensions are shown: Inch (mm)
Specifications and dimensions subject to change

C&K ZMA Series Subminiature Snap-acting Switches

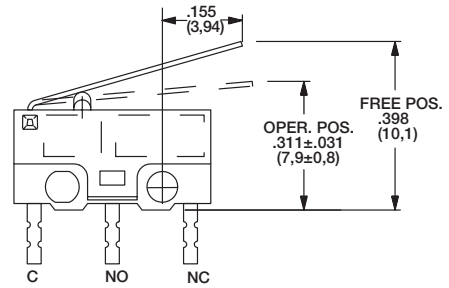
ACTUATOR



P00 PIN PLUNGER



L04 LEAF



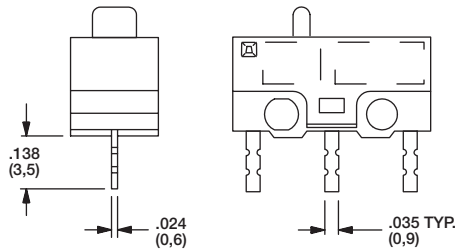
SWITCH CHARACTERISTICS

Option Code	Maximum Operate Force (oz. / grams)		Minimum Release Force (oz./grams)		Free Position Max	Maximum Pre-travel	Operate Position	Maximum Differential	Minimum Overtravel
	080	150	080	150	All	All	All	All	All
P00	2.82 80	5.29 150	0.35 10	0.71 20	0.289 (7,35)	0.024 (0,62)	0.272 +/- 0.012 (6,9 +/- 0,3)	0.005 (0,12)	0.008 (0,2)
L04	1.06 30	1.76 50	0.18 5	0.28 8	0.398 (10,1)	0.031 (3,0)	0.311 +/- 0.031 (7,9 +/- 0,8)	0.031 (0,8)	0.024 (0,6)

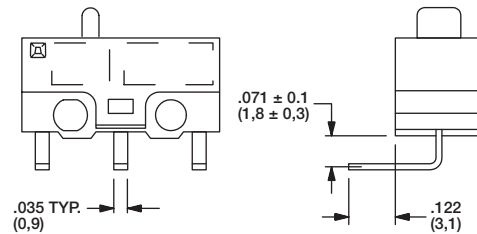
TERMINATIONS



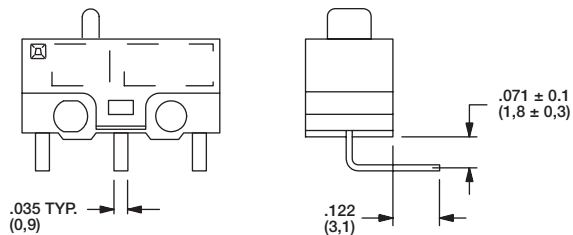
P PC THRU-HOLE



L LEFT FOOTED, PC THRU-HOLE



R RIGHT FOOTED, PC THRU-HOLE



F

Detect