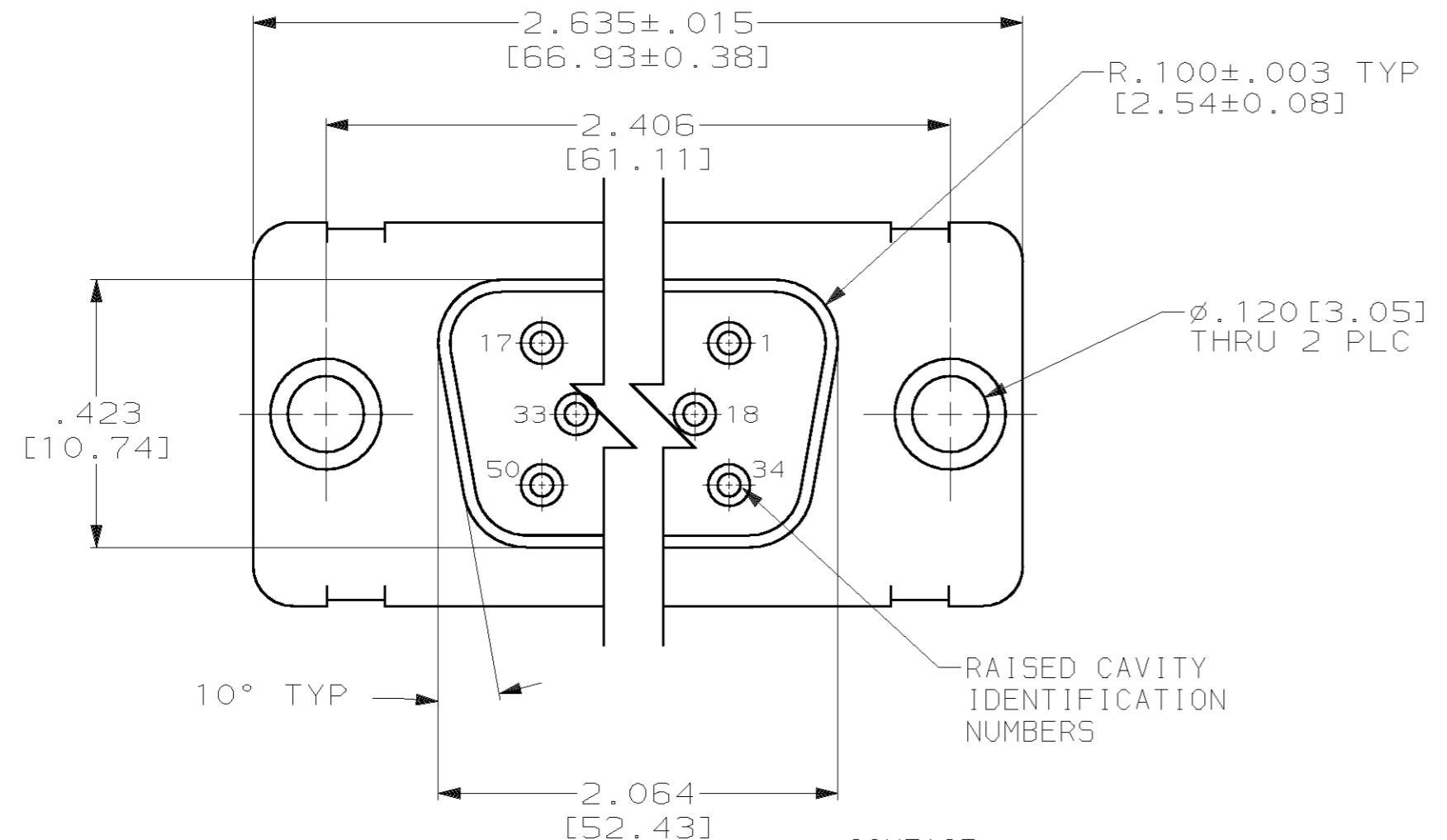
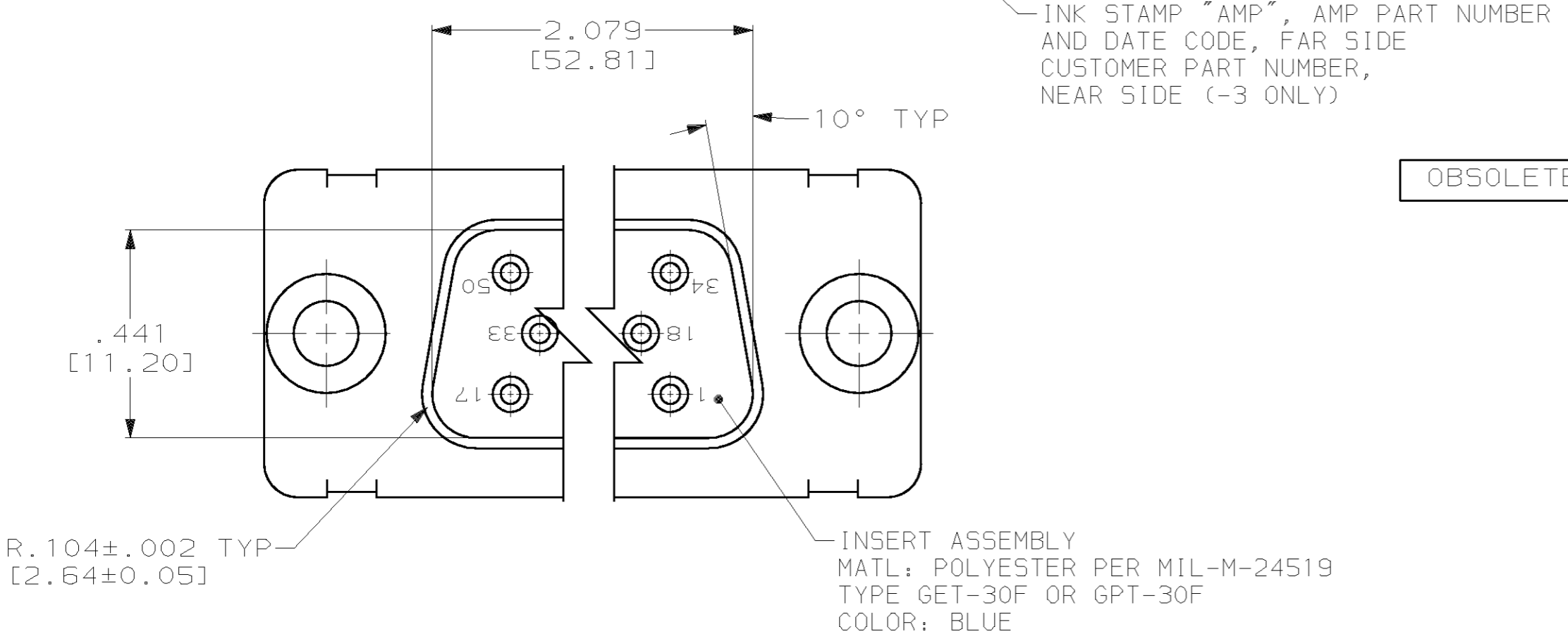
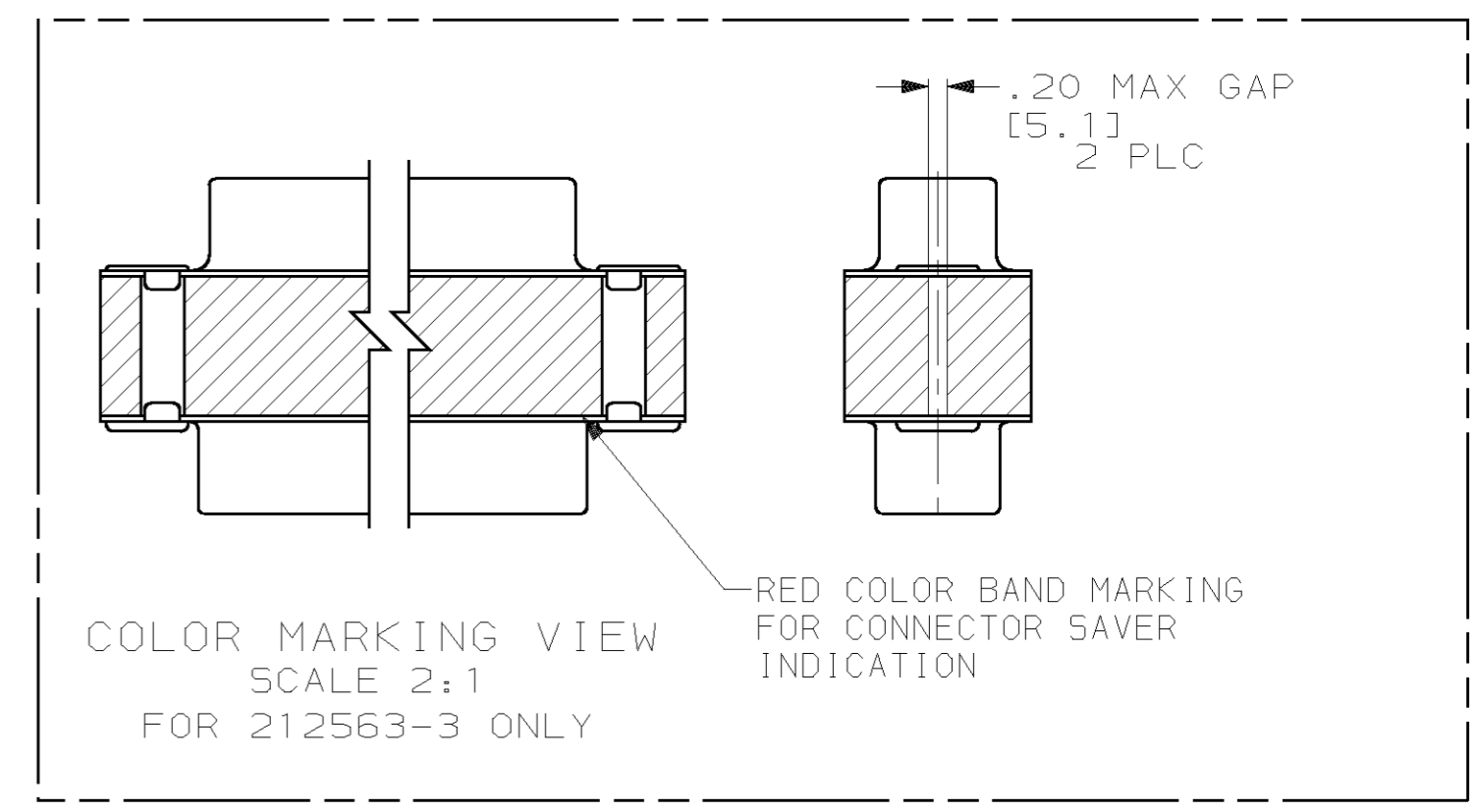
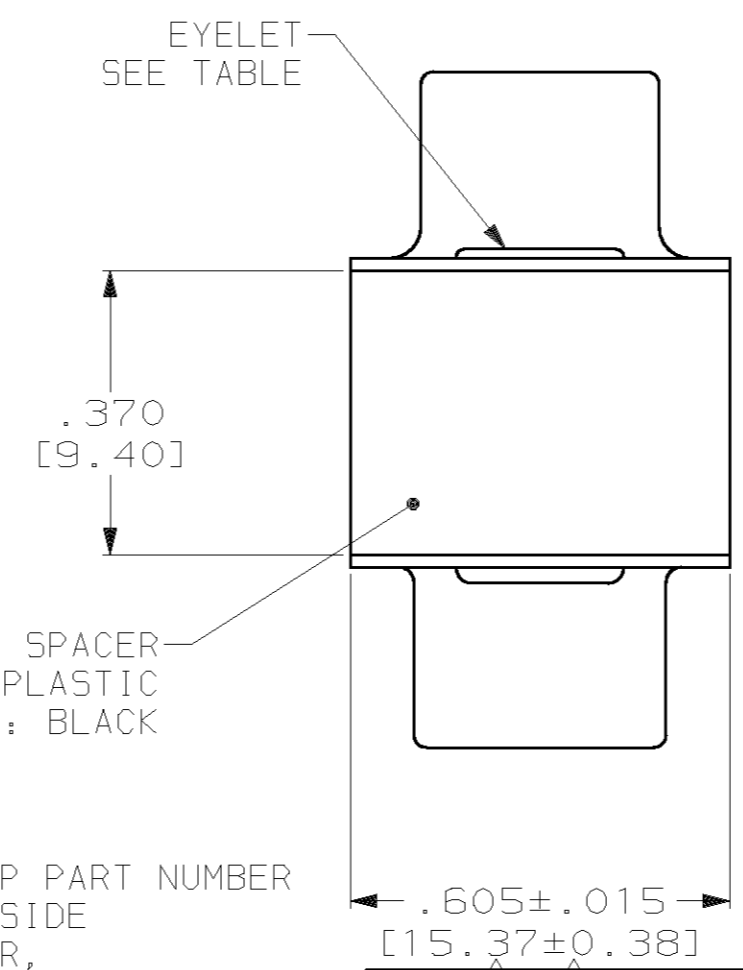
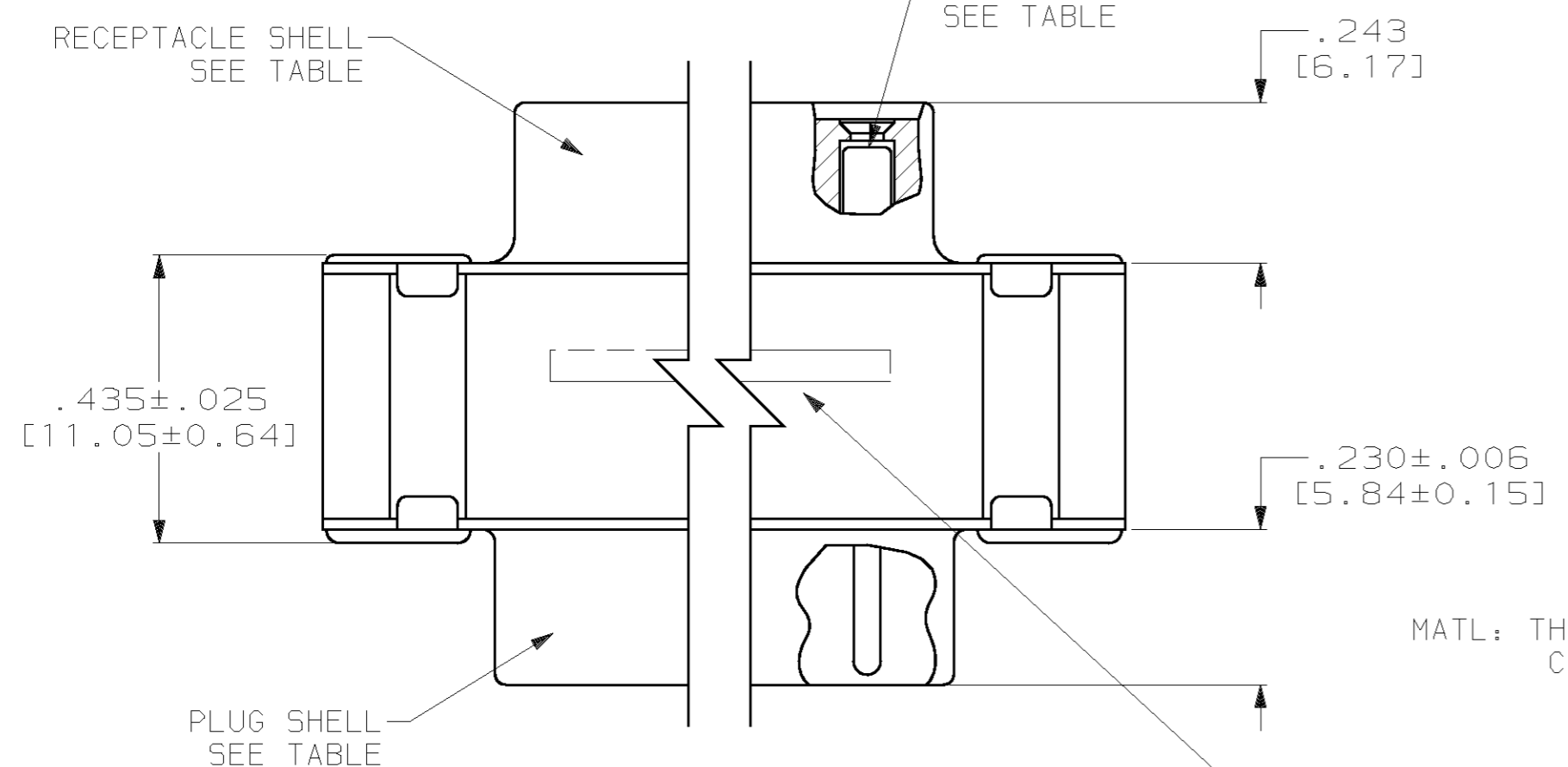


THIS DRAWING IS UNPUBLISHED. RELEASED FOR PUBLICATION
 (C) COPYRIGHT 19 BY AMP INCORPORATED. ALL RIGHTS RESERVED.

LOC		DIST		REVISIONS			
P	LTR	DESCRIPTION	DATE	DWN	APVD		
R		REV PER 063D-0619-02	7-03	JMK	LO		



- 1. CONTACTS INCLUDED IN ASSEMBLY.
- 2. MATL: STEEL, PER ASTM-A-109.
- 3. FINISH: CADMIUM PER QQ-P-416.
- 4. CONTACT
 BODY MATL: BERYLLIUM COPPER PER ASTM-B-197.
 BODY FINISH: PLATED GOLD, .000050 MIN THK PER MIL-G-45204 OVER NICKEL, .000050 MIN THK PER QQ-N-290.
- 5. HOOD MATL: STAINLESS STEEL PER ASTM-A-167.
 HOOD FINISH: PASSIVATED PER ASTM-A-380
 FINISH: PLATED ZINC .00020 MIN THK PER ASTM-B-633.
 YELLOW CHROMATE FINISH.
- 6. MATL: BRASS PER ASTM-B-36.
- 7. FINISH: PLATED GOLD, .000050 MIN THK PER MIL-G-45204 OVER COPPER, .000100 MIN THK PER MIL-C-14550.
- 8. CONTACT
 BODY MATL: BERYLLIUM COPPER PER ASTM-B-197.
 BODY AND HOOD FINISH: PLATED GOLD, .000050 MIN THK PER MIL-G-45204 OVER COPPER, .000100 MIN THK PER MIL-C-14550.
 HOOD MATL: BRASS PER ASTM-B-36



OBSOLETE	6 7	7 6	4	4U884 SOCN R10002677-0105	212563-6
	6 7	7 6	8	PT2-111-11	212563-5
	6 7	7 6	8	-	212563-4
	6 7	7 6	4	(1J02-105)	212563-3
	6 7	7 6	8	-	212563-2
	6 5	2 3	4	-	212563-1
	EYELET	SHELLS	CONTACT	CUSTOMER P/N	PART NO.

THIS DRAWING IS A CONTROLLED DOCUMENT FOR AMP INCORPORATED. IT IS SUBJECT TO CHANGE AND THE CONTROLLING ENGINEERING ORGANIZATION SHOULD BE CONTACTED FOR THE LATEST REVISION.

DIMENSIONS: IN [mm]	TOLENCES UNLESS OTHERWISE SPECIFIED: 0 PLC ±- 1 PLC ±- 2 PLC ±- 3 PLC ±.005 [0.13] 4 PLC ±- ANGLES ±- FINISH -	DWN T. THOMPSON CHK D. MANTIONE 11-07-94 APVD D. MANTIONE 11-07-94 PRODUCT SPEC APPLICATION SPEC WEIGHT CUSTOMER DRAWING	AMP Incorporated Harrisburg, PA 17105-3608 NAME CONNECTOR SAVER, AMPLIMITE 50 POSITION, SIZE 5, SERIES 109 SIZE A2 CAGE CODE 00779 DRAWING NO C-212563 SCALE 4:1 SHEET 1 OF 1 REV R
------------------------	---	---	---