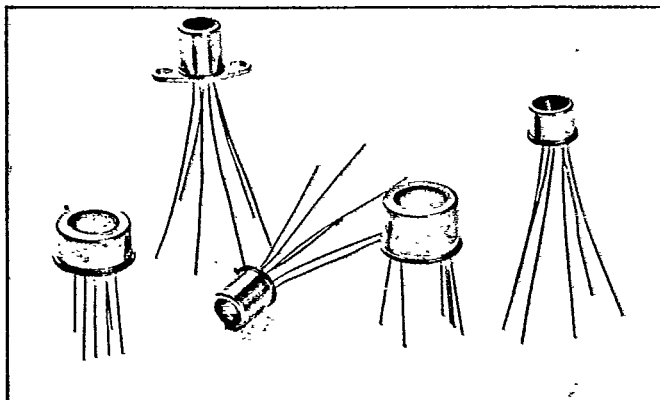


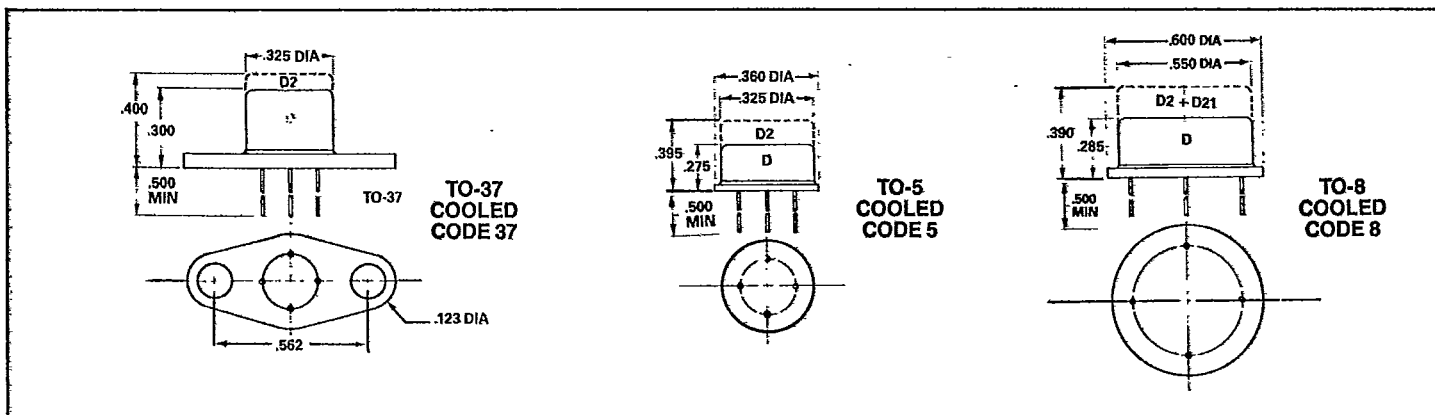
# NEW ENGLAND PHOTOCONDUCTOR



## Lead Sulfide Thermoelectrically Cooled Detectors Series D-D2-D21

### FEATURES

- Hermetically Sealed Packages
- Customized Wavelength Response
- Customized Test Procedure
- Guaranteed Delivery
- 2 Year Guarantee
- Customized Filters Available



### Electrical Specifications

Test Conditions at 25° C	D	D2	D21
D* (Pk.,600,1) × 10 <sup>11</sup>	1.5	2.5	3.0
Wavelength Cut-off Microns	3.5	3.5	3.6
Peak Wavelength Response	2.6	2.7	2.8
Time Constant Mil Seconds	1-2	1-2	1-2.5
Resistance Megohms	1-10	1-10	1-15
Operating Temperature, °C	-20	-30	-45
Cooler Power Volts DC/Amps	1.2V/1.8A	1.3V/1.6A	2.2V/1.2A

### HOW TO ORDER:

Select the proper electrical type (D, D21), match it with the proper mechanical and package code number. Example: D-3-8, D2-1-37, D21-3-8. The active areas listed above are considered standard sizes. Special sizes are available upon request.

### Mechanical Specifications

Code Number	Active Area		Bias Voltage		Typical VW <sup>-1</sup> × 10 <sup>5</sup> Responsivity			Package Size
	Inches	mm	Typical	Maximum	-20	-30	-45	
1	.040	1	50	100	6.0	9.0	13.0	TO5-37-8
2	.080	2	100	200	3.0	4.5	6.5	TO5-37-8
3	.120	3	150	300	2.5	3.5	4.5	TO5-37-8
4	.200	5	250	500	1.2	2.0	3.0	TO8

See Page 15 for additional technical information.