

74ABT162260

12-Bit to 24-Bit Multiplexed D-Type Latches with 25Ω Series Resistors in the Outputs

General Description

The 74ABT162260 is a 12-bit to 24-bit multiplexed D-type latch with TRI-STATE® outputs. Its intended use is to multiplex two separate data paths onto one, or demultiplex from a single data path. Applications include multiplexing and/or demultiplexing of address and data info in microprocessors, memory interleaving and bus interface.

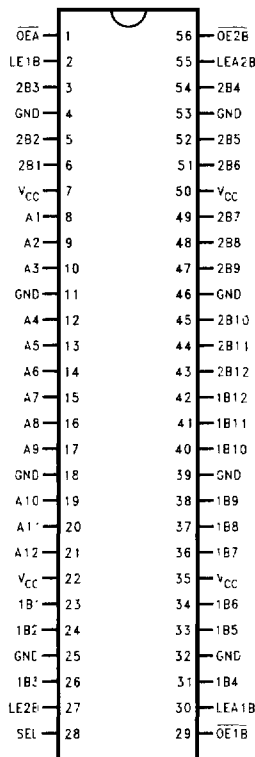
The 25Ω series resistors in the outputs reduce ringing and eliminate the need for external resistors.

Features

- Guaranteed latch-up protection
- Non-destructive hot insertion capability
- High impedance glitch free bus loading during entire power up and power down cycle
- Flow through architecture optimizes PCB layout

Connection Diagram

Pin Assignment for SSOP



TL/F/12113-1

Function Tables

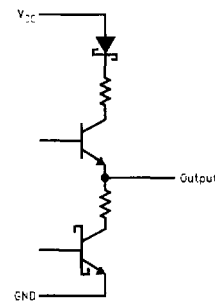
B to A (OE \bar{B} = H)

		Inputs					Outputs
1B	2B	SEL	LE1B	LE2B	OE \bar{A}	A _n	
H	X	H	H	X	L	H	
L	X	H	H	X	L	L	
X	X	H	L	X	L	A _n	
X	H	L	X	H	L	H	
X	L	L	X	H	L	L	
X	X	L	X	L	L	A _n	
X	X	X	X	X	H	Z	

A to B (OE \bar{A} = H)

		Inputs				Outputs	
A	LEA1B	LEA2B	OE1B	OE2B	1B _n	2B _n	
H	H	H	L	L	H	H	
L	H	H	L	L	L	L	
H	H	L	L	L	H	2B _n	
L	H	L	L	L	L	2B _n	
H	L	H	L	L	1B _n	H	
L	L	H	L	L	1B _n	L	
X	L	L	L	L	1B _n	2B _n	
X	X	X	H	H	Z	Z	
X	X	X	L	H	Active	Z	
X	X	X	H	L	Z	Active	
X	X	X	L	L	Active	Active	

Schematic of Each Output



TL/F/12113-2

