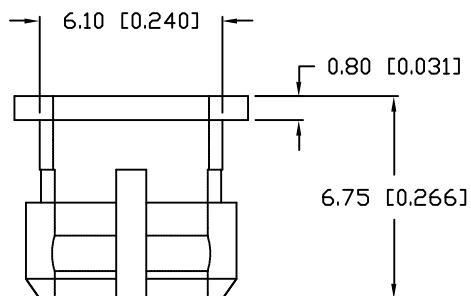
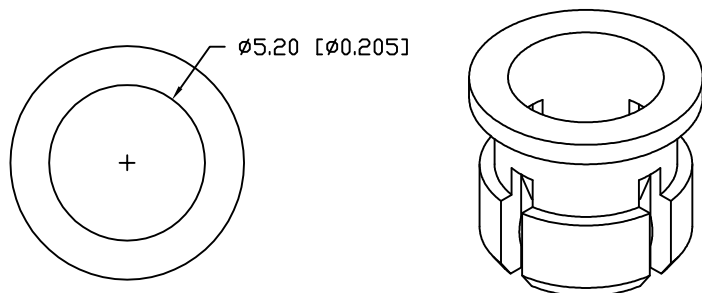


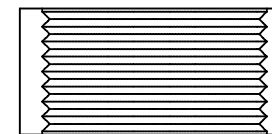
UNCONTROLLED DOCUMENT

PART NUMBER
SSH-LXH5090

REV.

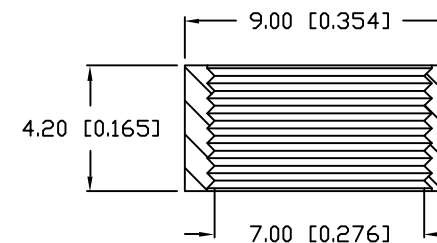
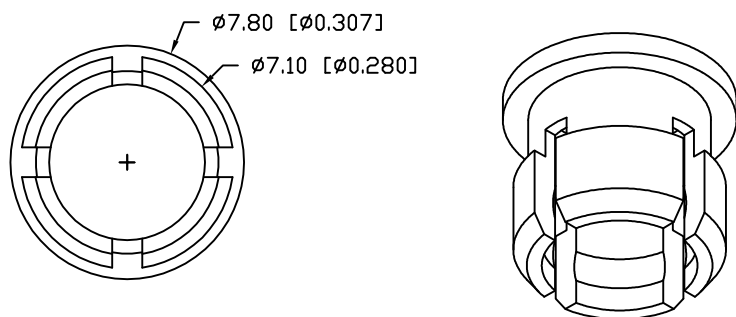
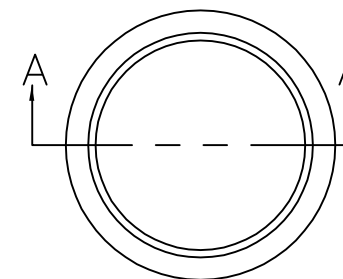


SSH-LXH5090



NOTES:

- 1. MATERIAL: POLYPROPYLENE (PP), BLACK.



SECTION A-A

UNCONTROLLED DOCUMENT

*UNLESS OTHERWISE SPECIFIED TOLERANCES PER DECIMAL PRECISION ARE: X=±1 (±0.039), X.X=±0.5 (±0.020), X.XX=±0.25 (±0.010), X.XXX=±0.127 (±0.005). LEAD SIZE=±0.05 (±0.002), LEAD LENGTH=±0.75 (±0.030). MIN.= +DECIMAL PRECISION -0.00, MAX.= +0.00 -DECIMAL PRECISION

REV.	PART NUMBER SSH-LXH5090
PANEL INDICATOR HOLDER.	

CONFIDENTIAL INFORMATION
 THE INFORMATION CONTAINED IN THIS DOCUMENT IS THE PROPERTY OF LUMEX INC. EXCEPT AS SPECIFICALLY AUTHORIZED IN WRITING BY LUMEX INC., THE HOLDER OF THIS DOCUMENT SHALL KEEP ALL INFORMATION CONTAINED HEREIN CONFIDENTIAL AND SHALL PROTECT SAME IN WHOLE OR IN PART FROM DISCLOSURE AND DISSEMINATION TO ALL THIRD PARTIES.

RELIABILITY NOTE
 OUR MANY YEARS OF EXPERIENCE DATA ACCUMULATION INDICATE THAT SOLDER HEAT IS A MAJOR CAUSE OF EARLY AND FUTURE FAILURE. PLEASE PAY ATTENTION TO YOUR SOLDERING PROCESS.

		290 E. HELEN ROAD PALATINE, IL 60067-6976 PHONE: +1.847.359.2790 US WEB: www.lumex.com TW WEB: www.lumex.com.tw	
DRAWN BY:	CHECKED BY:	APPROVED BY:	DATE:
			PAGE: 1 OF 1
			SCALE: N/A

Two Piece 5mm LED Panel Bezel

INDEX

- [Product Table](#)
- [Order Samples](#)
- [Stock/Price Request](#)
- [Sales and Tech Support](#)

PRODUCT TREE

1. [Product Gallery](#)
2. [LED Panel, PCB and Array Indicator Assemblies](#)
3. [Panel Mount LED Indicators](#)
4. [Panel Mounting Hardware](#)
5. [Panel Mount Holders](#)
6. [Two Piece 5mm LED Panel Bezel](#)

[View](#) Image next to part no. indicates cad file.

Lumex drawings are in PDF format. If you don't have Adobe Acrobat, click on this icon to

[download a free copy](#)

Lumex Part Number	Material	Panel Hole
SSH-LX5090 View	Black Nylon	1/4"

[Home](#) |
 [What's New](#) |
 [Product Gallery](#) |
 [Product Search](#) |
 [X-Ref Search Engine](#) |
 [Tech Notes](#) |
 [Sales and Tech Support](#) |
 [Corporate Info](#)

290 East Helen Road Palatine, IL 60067 Telephone: (847) 359-2790 Facsimile: (847) 359-8904 E-mail us at sales@lumex.com

© 1997-2001 Lumex, Inc.