

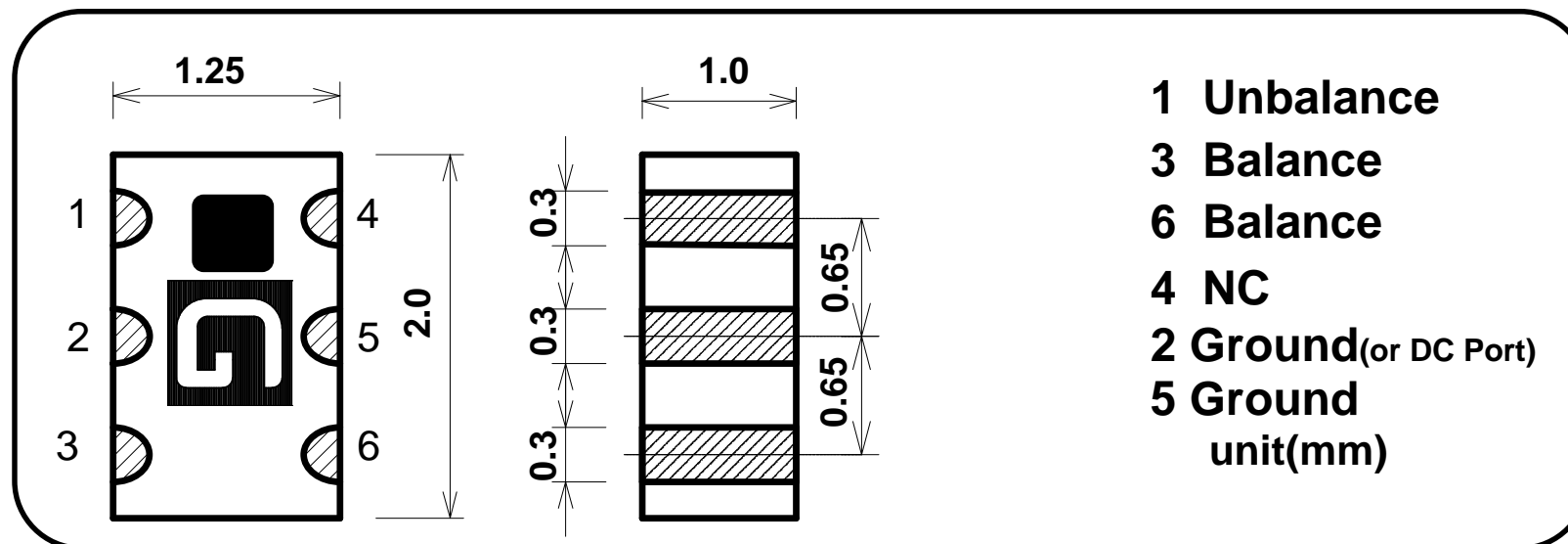
2012 Size

1.71-1.91GHz Band  
Chip Multilayer RF Transformer

Impedance Ratio 50:200

**SLT-S180G**

## Shape & Size



## Specifications (Temporary)

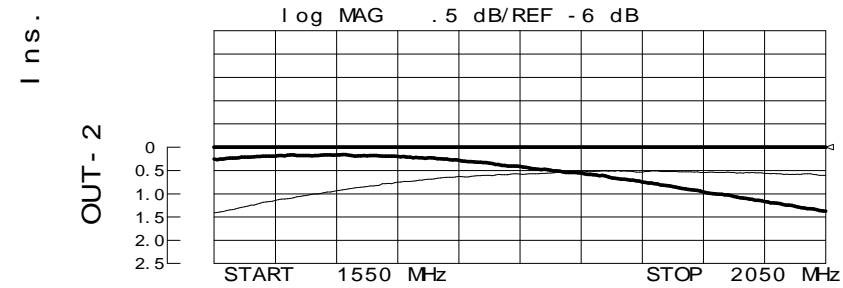
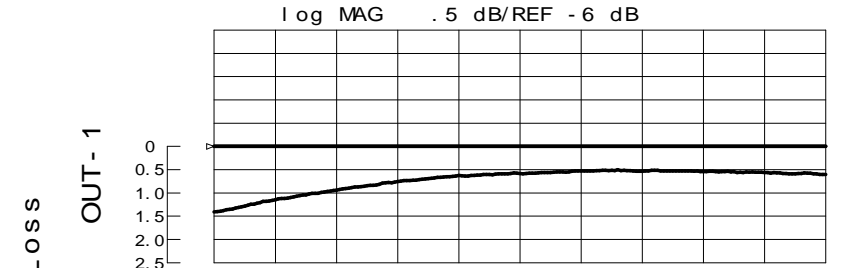
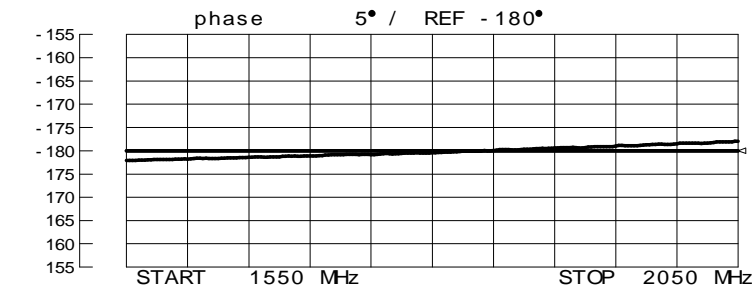
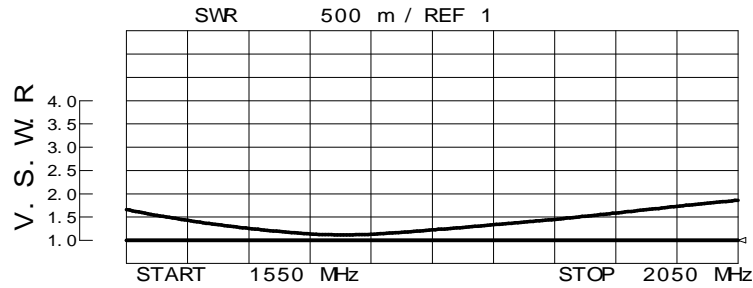
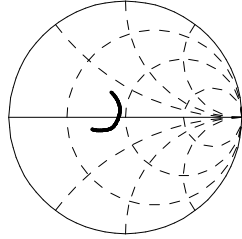
P/N	Frequency Range(GHz)	Impedance ratio	Insertion Loss *1	Amplitude Balance	Phase Balance	Handling Power	Temperature Range
SLT-S180G	1.71-1.91	50:200	1.0dB Max.	1.0dB Max.	180 +/- 10deg.	1W Max.	-35 to +85 deg.C

\*1 Measured by "Back to Back" per piece

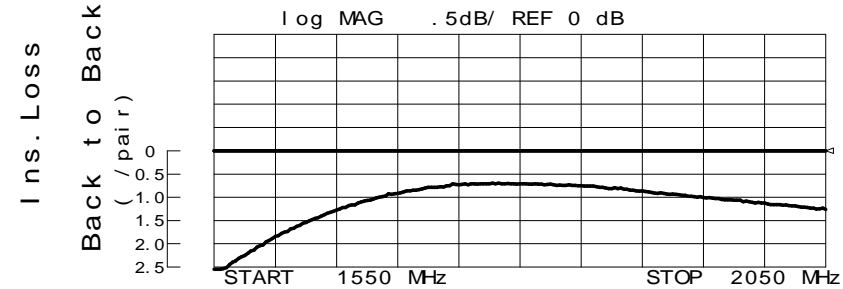
"All the technical data and information contained herein are subject to change without notice."

# SLT-S180G Sample DATA

1 U FS

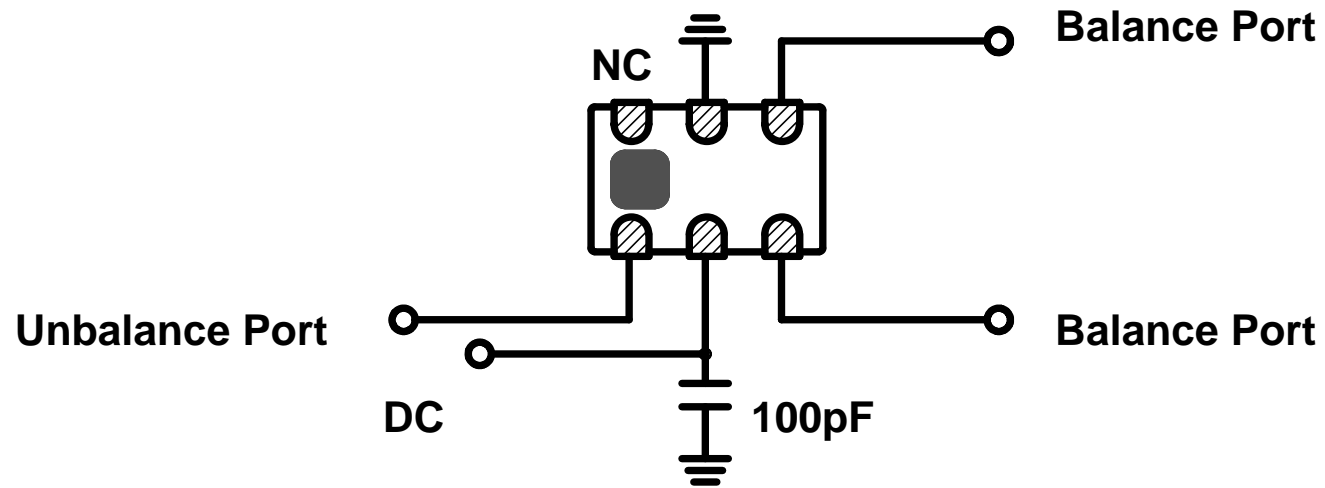


Insertion Loss(Out 1, Out 2):  
measurement - splitting loss - resistor loss

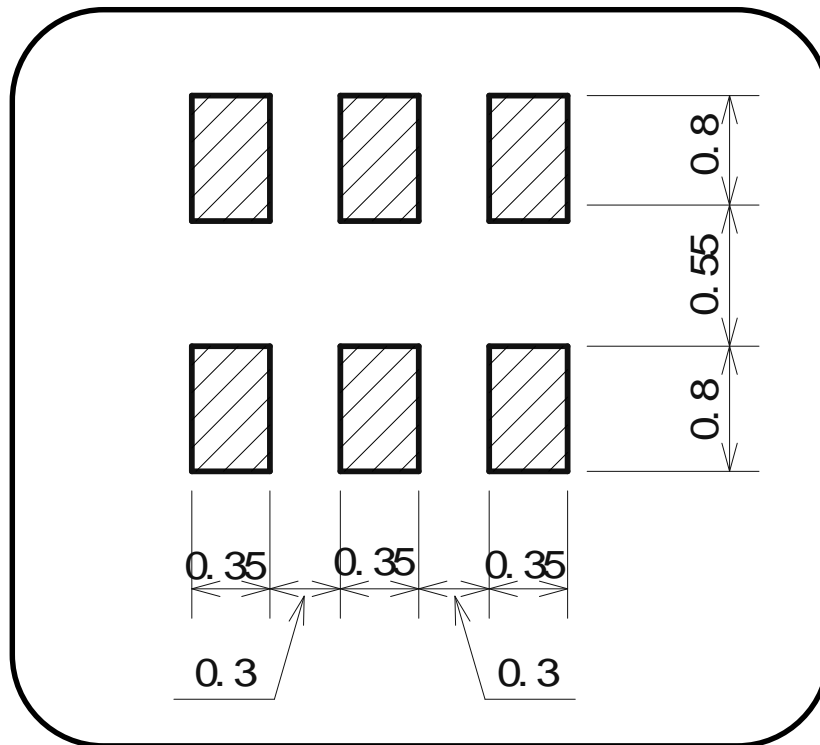


Phase Balance Amp. Balance

If you apply DC voltage to Balance Port,  
please add capacitor as below circuit A.



## Foot Pattern



## Foot Pattern Example

