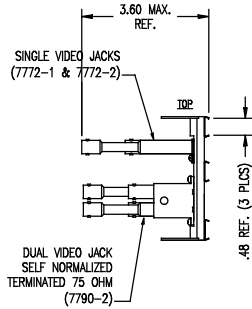
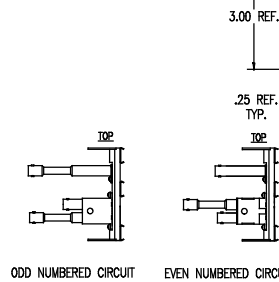


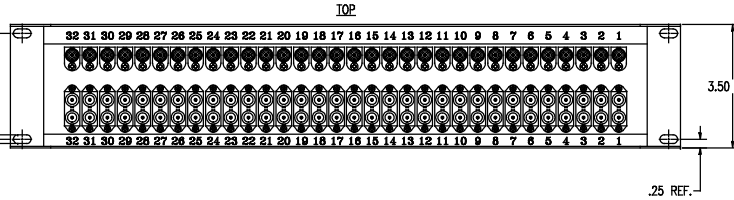
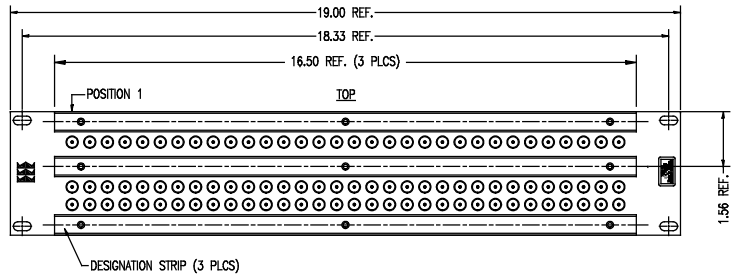
DASH NO.	M CODE	MADE FROM
----------	--------	-----------



SEE JACK STAGGER DETAIL



JACK STAGGER DETAIL



NOTES:

- PANEL:
 - MATERIALS: VIDEO PANEL: PHENOLIC, TYPE BIE; SCREWS: STAINLESS STEEL; ALL OTHER METAL PARTS: COLD ROLLED STEEL

- DUAL NORMAL TERMINATED MID-SIZE VIDEO JACKS (32) P/N 7790-2:
 - FINISHES: SCREWS: PASSIVATE PER QQ-P-35; MODULAR PANEL ASSY: BLACK PAINT

- DUAL NORMAL TERMINATED MID-SIZE VIDEO JACKS (32) P/N 7790-2:
 - MATERIALS: BODY: ZINC (ZAMACK); CONTACTS: BER. COPPER, ASTM-B-196; INSULATING MATERIALS: TPX, DELRIN & TEFLON, ASTM-D-4894; HARDWARE: ZINC PLATED MACHINE SCREWS; ALL OTHER METAL PARTS: BRASS, ASTM-B16

- DUAL NORMAL TERMINATED MID-SIZE VIDEO JACKS (32) P/N 7790-2:
 - FINISHES: CONTACTS: HARD GOLD PLATE PER MIL-G-45204 OVER NICKEL PLATE PER QQ-N-290; ALL OTHER METAL PARTS: NICKEL PER QQ-N-290

- DUAL NORMAL TERMINATED MID-SIZE VIDEO JACKS (32) P/N 7790-2:
 - ELECTRICAL CHARACTERISTICS: NOMINAL IMPEDANCE: 75 OHMS; TERMINATION RESISTANCE: 75 OHMS ±5%; FREQUENCY RANGE: DC TO 3.5 GHz

- SINGLE PATCH THRU VIDEO JACKS (16) P/N 7772-1 & (16) P/N 7772-2:
 - MATERIALS: INSULATORS—TEFLON, ASTM-D-4894; SPRING CONTACT } BNC CONTACT F } BER. COP., ASTM-B-196; VIDEO CONTACT F }

- SINGLE PATCH THRU VIDEO JACKS (16) P/N 7772-1 & (16) P/N 7772-2:
 - FINISHES: ALL OTHER METAL PARTS—BRASS, ASTM-B16

- SINGLE PATCH THRU VIDEO JACKS (16) P/N 7772-1 & (16) P/N 7772-2:
 - FINISHES: CENTER CONTACTS } GOLD PLATE PER MIL-G-45204; SPRING CONTACT } OVER NICKEL PLATE PER QQ-N-290; ALL OTHER METAL PARTS: NICKEL PLATE PER QQ-N-290

- SINGLE PATCH THRU VIDEO JACKS (16) P/N 7772-1 & (16) P/N 7772-2:
 - ELECTRICAL CHARACTERISTICS: NOMINAL IMPEDANCE: 75 OHMS; FREQUENCY RANGE: 500 MHz

UNLESS OTHERWISE SPECIFIED
 1. ALL DIMENSIONS IN INCHES [MILLIMETERS].
 2. TOLERANCES:
 .XXX ±.004 .XX ±.010
 [.XXX ±.10] [.XX ±.25]
 FRACTIONS: X/Y ±.010 [.25] ANGLES: ± 1°
 ★ CRITICAL DIMENSIONS

REVISIONS	
ISSUE	CHANGES
0	ER 39086 JLA 06/01/04
1	CN 39411 D AM 02/16/06
2	CN 39757 A HVN 01/18/07
D	ER 6249 BAM 01/31/08
E	ER 6363 BAM 02/05/08
F	ER 8575 BAM 05/28/08

SD7795-21

CUSTOMER SALES DRAWING

SCALE	2:5
APPROX SURFACE AREA	
USED ON	
REF:	EQR 787 & E-20260
JACKFIELD, MID-SIZE, 32 CIRCUIT, 2 RU	
DRAWN	JLA DATE 06/01/04
DESIGN	JLA DATE 06/01/04
APPR.	DATE
SD7795-21	