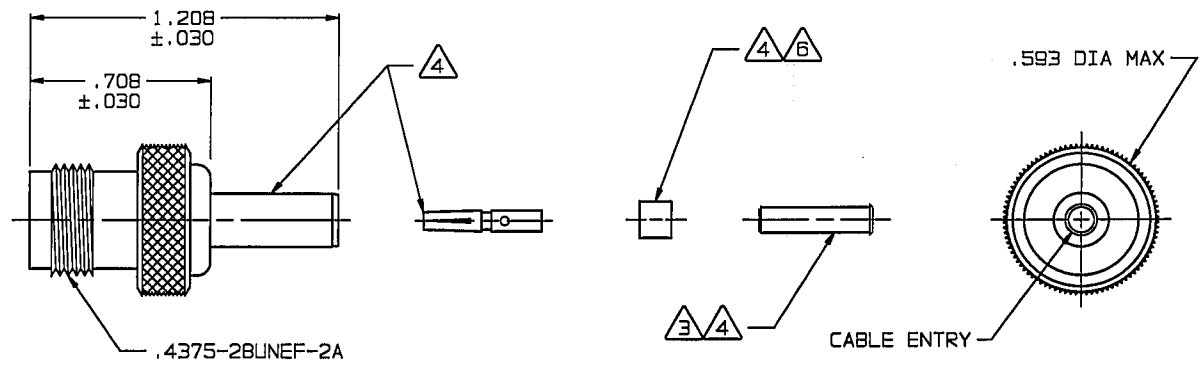


RED INDICATES ORIGINAL

DASH NO	CABLES ACCOMMODATED	A HEX	ASSEMBLE PER	
-001	RG-178,-196	.178	TAI-A118	
-002	HEWLETT-PACKARD 8120-1107	.197		
-003	RG-174,-188,-316	.178		
-004	RG-179,-187			
-005	MIL 17/094			
-006	GRUMMAN-GC875GP1 DBL-SHLD RG-188	.197		
-007	275-3991 MICRODOT			
-008	RG-195,-180 421-111 ESSEX			
-009	8218 BELDEN YR23023 BELDEN 21-597 ESSEX	.178		
-010	RG-122			
-011	RG-58,-141,-303 21-537 ESSEX	.213	TAI-C118	
-012	RG-55,-142,-223 RG-400			
-013	RG-59		TAI-A118	
-013A	TCC-75-2	.255		
-013B	RG-62		TAI-A118	
-014	8212 BELDEN			
-015	730A AT&T	.290	TAI-C118	
-015A	RG-71			
-016	724 AT&T 8281 BELDEN	.324	TAI-A118	
-017	RG-6	.344		
-018	9268 BELDEN	.255		
-019	8279 BELDEN			
-020	9248 BELDEN	.290		
-021	88240 BELDEN	.213		
-022	88241,89269 BELDEN	.255		TAI-C118
-023	89108 BELDEN			
-024	89120 BELDEN	.290	TAI-A118	
-025	734A,AT&T	.255		
-026	735A,AT&T	.178		
-027	KS19224L2, AT&T			

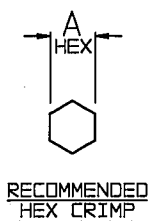
DWG SIZE **B**
 DATA CONTAINED IN THIS DOCUMENT IS PROPRIETARY TO TROMPETER ELECTRONICS INC. AND SHALL NOT BE DISCLOSED, COPIED OR USED FOR PROCUREMENT OR MANUFACTURE WITHOUT EXPRESS WRITTEN PERMISSION.

REVISIONS			1-0445		SH 1
REV	EO	DESCRIPTION	DWN	APPROVED	DATE
P	10493	DELETED -028 CABLE GROUP; ADDED ITEM 38; SEE ECO	DKC	<i>Bm; Fa</i>	4/8/94



-001 SHOWN

INCH	MM
.005	0.13
.030	0.76
.178	4.52
.197	5.00
.213	5.41
.255	6.48
.290	7.37
.324	8.23
.344	8.73
.593	15.06
.708	17.98
1.208	30.68



- Ⓚ** FOR CABLE GROUP -011 SUPPLY 1 EA ACCO11; FOR CABLE GROUPS -013, -013A & -013B SUPPLY 1 EA ACCO13; MAY BE ASSEMBLED TO CABLE/CONNECTOR ASSY USING 3M SCOTCHGRIP NO. 1099 PLASTIC ADHESIVE OR EQUIV
- Ⓛ** IF PLASTIC STRAIN RELIEF REQUIRED, ADD SUFFIX "BT" TO MODEL NO. (ONLY AVAILABLE WITH -011, -013, -013A & -013B)

- Ⓐ** CONTACT, SLEEVE, CRIMP SLEEVE & CONTACT SUPPORT BUSHING ARE SUPPLIED LOOSE
- Ⓜ** SLEEVE REQUIRED ON -001 THRU -007 & -027 ONLY
- 2. FINISH: TFS-1A (NICKEL)
- 1. ALL DIM ARE IN INCHES

- Ⓟ** CONTACT SUPPORT BUSHING REQUIRED ON -013B, -015A & -022 ONLY
- 5. RF COAXIAL TNC FULL CRIMP CABLE RECEPTACLE (EQUIV MIL-CAT "D")

QTY	DESCRIPTION	PART NUMBER	ITEM
TOL UNLESS SPECIFIED .XX ± .XXX ± .005 .XXXX ± ANGLES ±	TROMPETER ELECTRONICS, INC.	CJ240	
DWN DKC 3-18-94	MATERIAL	CODE IDENT	DRAWING NO.
CHK <i>Bm</i> 4-6-94		14949	1-0445
ENGR			REV P
APPR <i>Fa</i> 4/8/94	SCALE 2/1	DATE 2/10/77	SHEET 1 OF 2

NEXT ASSY