

New!

A01 SERIES INDUSTRIAL CONTROLS

INDICATORS, PUSHBUTTON SWITCHES, ROTARY LEVER SWITCHES,
KEYLOCK SWITCHES & EMERGENCY STOP SWITCHES

FEATURES

- Momentary or Maintained 1, 2, 3 & 4 pole changeover contacts.
- Front panel gasket, internal seal and mounting nut are standard.
- All models mount in .630" (16mm) dia. hole in panels up to .156" (4mm) thick.
- Secure modular snap-together body and switch block can easily be dis-assembled.
- UL, CSA, VDE & BEAB approvals.
- Panel assembly tool that mates with mounting nut insures easy installation.
- Lever & keylock switches available in 2 and 3 positions.
- Screen and lamp are removeable with optional tools.
- All controls provide matching, cosmetic styling.
- ON or OFF switch position is clearly visible from side, both mechanically & when illuminated.
- Film legends insertable behind screen, or screen may be engraved.
- Red mushroom head twists to reset positive break Emergency Stop switch.
- Switch and lamp terminals mate with .110" (2.8mm) Faston connectors or can be soldered.

MATERIALS

Operator outer body & internal parts:	Flame retardant PBT.
Switch body & cover:	Flame retardant PBT.
Actuator:	Flame retardant PBT
Seals:	Silicon rubber.
Contacts:	Fine silver with gold flash.
Contact carriers (fixed & moving):	High conductivity brass with silver plate and gold flash.
Reflector, Diffuser & Screen:	Flame retardant Polycarbonate.
Retaining Nut:	ABS.

GENERAL SPECIFICATIONS

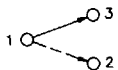
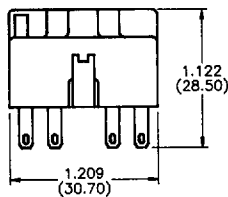
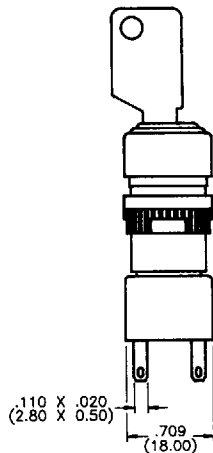
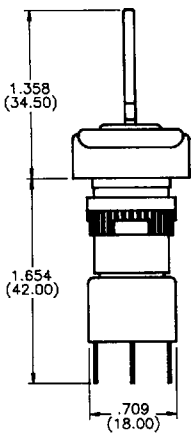
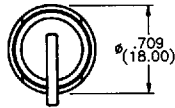
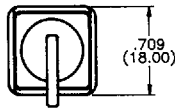
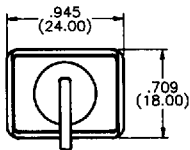
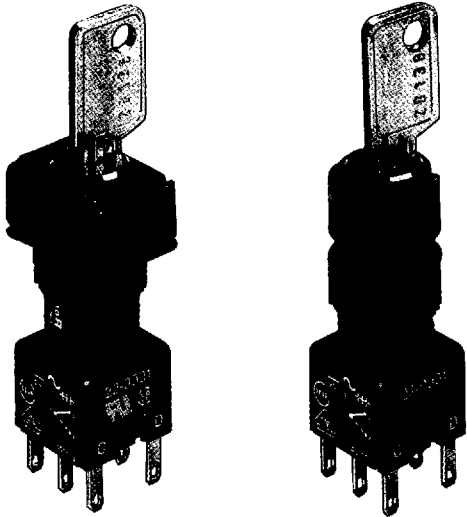
Contact rating:	10 mA at 5 VAC min. 6 Amps at 250 VAC max.
Initial contact resistance:	< 10 mΩ at 4 VDC & 1 Amp
Insulation resistance:	> 50 megohms
Dielectric strength:	750 V open contacts. 5 KV contacts to panel
Electrical life:	>50,000 operations (frequent duty)
Mechanical life:	Momentary > 1 million operations Maintained > 100,000 operations Key & Lever > 100,000 operations
Operating temp. range:	-20°C to +55°C
Actuation force:	9 - 36 oz. (depending on switch element)
Illumination:	T1-3/4 midget groove incandescent, neon or multi-chip LED lamp
Illumination life:	Incandescents - approx. 5,000 hrs. Neons - approx. 10,000 hrs. LEDs - > 60,000 hrs. (to 75% relative luminosity)
Environmental protection:	IEC 529 IP 65 front of panel & IP40 back of panel (class 2)
Solder heat resistance:	350°C max. for 5 seconds

SPECIFICATIONS SUBJECT TO CHANGE WITHOUT NOTICE.

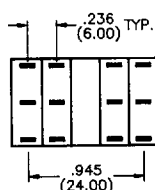
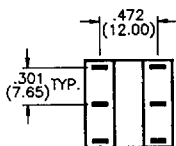
D 96E ■ 6346802 0001500 9T1 ■

New!

A01 SERIES INDUSTRIAL CONTROLS KEYLOCK SWITCHES



SCHEMATIC



KEYLOCK OPERATORS

Model no.	Description
A018101	Rect., 2 pos., 1 or 2 pole maint'd.
A018201	Square, 2 pos., 1 or 2 pole maint'd.
A018301	Round, 2 pos., 1 or 2 pole maint'd.
A018102	Rect., 2 pos., 1 or 2 pole mom.
A018202	Square, 2 pos., 1 or 2 pole mom.
A018302	Round, 2 pos., 1 or 2 pole mom.
A018103	Rect., 2 pos., 3 or 4 pole maint'd.
A018203	Square, 2 pos., 3 or 4 pole maint'd.
A018303	Round, 2 pos., 3 or 4 pole maint'd.
A018104	Rect., 2 pos., 3 or 4 pole mom.
A018204	Square, 2 pos., 3 or 4 pole mom.
A018304	Round, 2 pos., 3 or 4 pole mom.
A018105	Rect., 3 pos., 1 or 2 pole maint'd.
A018205	Square, 3 pos., 1 or 2 pole maint'd.
A018305	Round, 3 pos., 1 or 2 pole maint'd.
A018106	Rect., 3 pos., 1 or 2 pole mom.
A018206	Square, 3 pos., 1 or 2 pole mom.
A018306	Round, 3 pos., 1 or 2 pole mom.
A018107	Rect., 3 pos., 1 or 2 pole maint'd. left, mom. right
A018207	Square, 3 pos., 1 or 2 pole maint'd. left, mom. right
A018307	Round, 3 pos., 1 or 2 pole maint'd. left, mom. right
A018108	Rect., 3 pos., 1 or 2 pole mom. left, maint'd. right
A018208	Square, 3 pos., 1 or 2 pole mom. left, maint'd. right
A018308	Round, 3 pos., 1 or 2 pole mom. left, maint'd. right

SPECIFICATIONS SUBJECT TO CHANGE WITHOUT NOTICE.

2 standard keys are supplied.

SWITCH BLOCKS

Model no.	Description
A0151B	Single Pole
A0152B	Double Pole
A0153B	Four Pole
A0155B	Three Pole

'B' Indicates fine silver contacts with gold flash. Consult factory for other options.

Note: Key is removable in any maintained position. Consult factory for other options.

Refer also to page H8 for additional Series A01 information.

To order: For complete Keylock Switch, select model no. for Operator and Switch Block. Note - for 2 pole Operator select single or double pole Switch Block and for 4 pole Operator select three or four pole Switch Block. Example: Rectangular 2 position, single pole maintained Keylock Switch = A018101 - A0151B

D 96E ■ 6346802 0001504 547 ■