

VERTICALLY POLARISED PANEL ANTENNA GSM900 VP/60/17 TYPE 1687, 1688, 1689

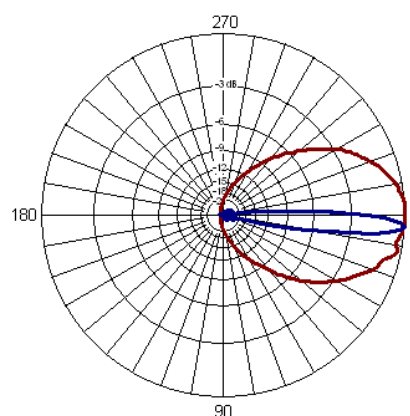
- ❑ HIGH GAIN
- ❑ SUPRESSED SIDELOBES

Vertically-polarised panel antennas from Thales have been designed to provide high RF performance, with highly suppressed sidelobes to minimise interference with adjacent cells.

A number of models provide variations in both gain and downtilt to exactly suit the required cell coverage. Superior design coupled with advanced manufacturing techniques guarantee consistent product quality & performance.

TECHNICAL SPECIFICATION

Frequency	870-960 MHz
Gain	17dBi
VSWR	1.3:1 max
Horizontal Beamwidth	60°
Vertical Beamwidth	8°
Fixed Electrical Downtilt	1687: 4° 1688: 0° 1689: 10°
Upper Sidelobe Suppression	>-20dB
Front-to-Back Ratio	>28dB
Power Rating	500W
Connectors	2 x 7/16" DIN female back
Impedance	50Ω
Dimensions (LxWxD)	2330 x 300 x 145 mm
Wind Loading	1071N @ 45m/s
Operational Wind Speed	45 m/s
Survival Wind Speed	56 m/s
Lightning Protection	DC grounded
Bracket Size	To suit pole 48-115mm
Bracket Downtilt	0°-6° in 1° steps
Temperature Range	- 55°C to + 65°C
Weight	16kg



THALES ANTENNAS LTD

First Avenue, Millbrook Trading Estate, Southampton SO15 0LJ United Kingdom

Tel: +44 (0) 2380 705705, Fax: +44 (0) 2380 701122, email: sales@racal-antennas.co.uk, www.thalesantennas.com

Thales reserve the right to vary in detail from the description and specification in this publication. Issue: 6/01/1