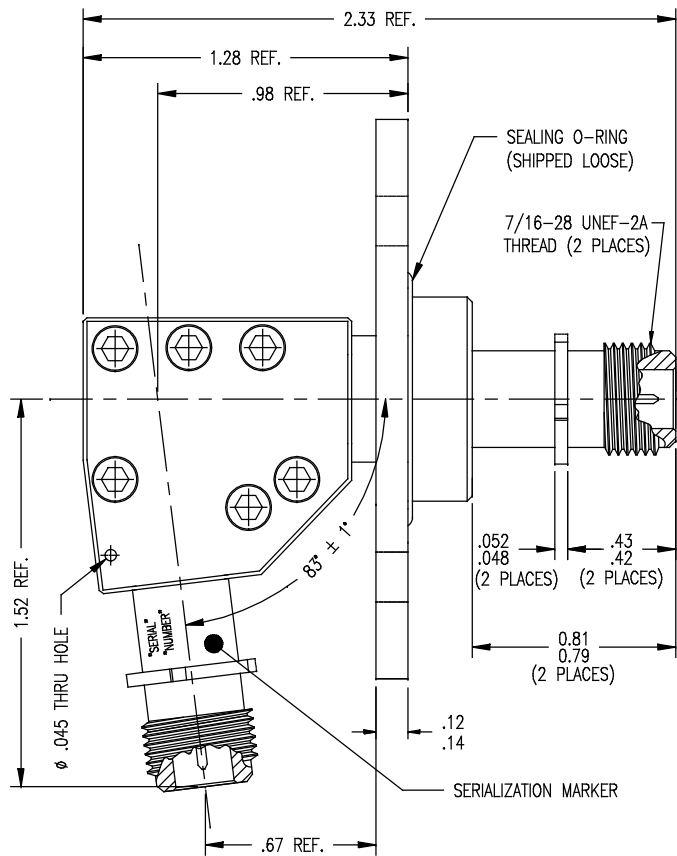


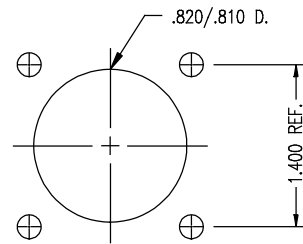
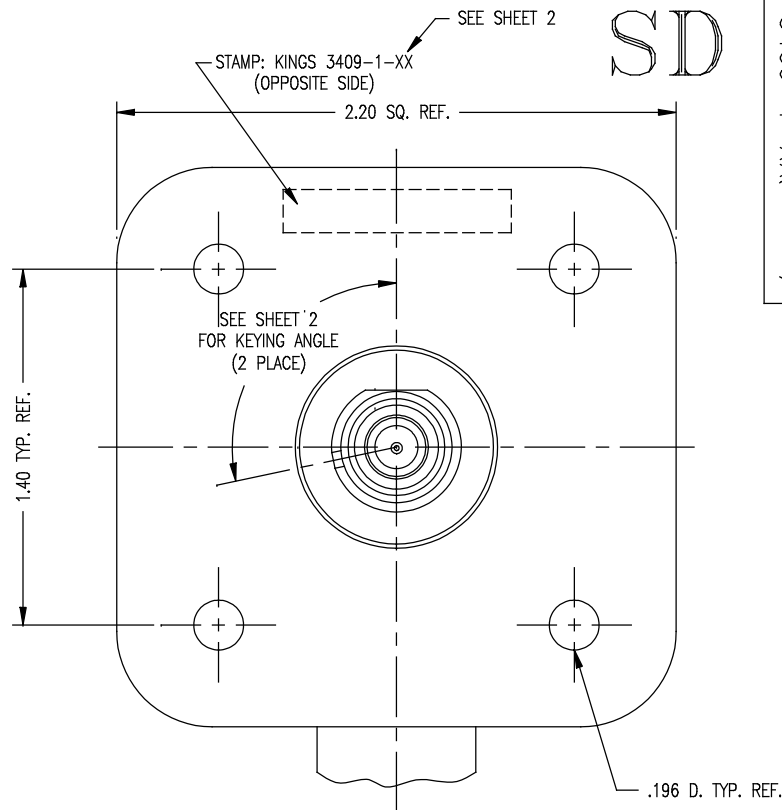
DASH NO.	M CODE	MADE FROM
----------	--------	-----------



NOTES:

- INTERFACE PER MIL-STD-348, FIG. 304-2.
- FOR USE WITH .31 MAX. PANEL.
- MATERIALS:  
 INSULATOR: TEFLON, ASTM-D-4894  
 CENTER CONTACT: BER. COP., ASTM-B-196  
 HOUSING: ALUMINUM, ASTM-B209  
 EPOXY (FILLER) 3M SCOTCH-WELD DP-190 B/A GREY  
 SEALING O-RING: PARKER "HIFLOUR" FLOUROCARBON RUBBER (FKM)  
 SERIAL NO. MARKER: TEDLAR  
 ALL OTHER PARTS: BRASS, ASTM-B16
- FINISHES:  
 CENTER CONTACT: GOLD PLATE PER MIL-G-45204  
 ALL OTHER METAL PARTS: CADMIUM PLATE PER SAE-AMS-QQ-P-416  
 ALUMINUM: ANODIZATION, COLOR BLACK

- ELECTRICAL CHARACTERISTICS:  
 NOMINAL IMPEDANCE: 50 OHMS  
 VOLTAGE RATING: 1000 VRMS  
 FREQUENCY RANGE: 11.2 - 12.8 GHz & 14.0 - 14.4 GHz  
 SWR: <= 1.25:1  
 INSERTION LOSS: 0.24 dB MAX.
- ENVIRONMENTAL CHARACTERISTICS:  
 PRESSURE TEST AT 30 PSI INTERNAL O-RING SEAL FOR ONE MINUTE.  
 VIBRATION TEST AT 39.6 Grms LEVEL PER D6-81926.
- SEALING METHOD FOR 2-PIECES SHELL TO CONNECTOR ENDS:  
 LOCTITE 262 (HIGH STRENGTH COMPOUND FOR LOCKING FASTENERS AGAINST SEVERE VIBRATION).



RECOMMENDED MOUNTING HOLE

SHOWN 1/2 SCALE

SD

SD

3409-1-XX(SHT 1 OF 2)

REVISIONS

ISSUE	CHANGES
0	ER 39107 JPK 06/24/04

3409-1-XXSD1

SCALE 2:1

APPROX SURFACE AREA

USED ON 3409-1

REF: C.B.B.

KB-KB, ADAPTER, KEYED  
83° ANGLE FEEDTHROUGH

DRAWN J. KENNEDY DATE 05/10/04

DESIGN J. KENNEDY DATE 04/22/04

APPR. DATE

**KINGS**  
ELECTRONICS CO., INC.  
ROCK HILL, SOUTH CAROLINA 29730

3409-1-XX(SHT 1 OF 2)

KINGS PART NO.	KEYING ANGLE
3409-1-1	42°
3409-1-2	54°
3409-1-3	66°
3409-1-4	78°
3409-1-5	90°
3409-1-6	102°
3409-1-7	114°
3409-1-8	126°
3409-1-9	138°
3409-1-10	150°
3409-1-11	162°
3409-1-12	174°
3409-1-13	186°
3409-1-14	198°
3409-1-15	210°
3409-1-16	222°
3409-1-17	234°
3409-1-18	246°
3409-1-19	258°
3409-1-20	270°
3409-1-21	282°
3409-1-22	294°
3409-1-23	306°
3409-1-24	318°

SD

3409-1-XX  
(SHEET 2 OF 2)

REVISIONS

ISSUE	CHANGES
0	ER 39107 JPK 06/24/04

3409-1-XXSD2

SCALE 1:1

APPROX SURFACE AREA

USED ON 3409-1

REF: C.B.B.

PART NO. & KEYING ANGLE TABLE

DRAWN J. KENNEDY	DATE 05/10/04
DESIGN J. KENNEDY	DATE 04/22/04
APPR.	DATE

 **KINGS**  
ELECTRONICS CO., INC.  
ROCK HILL, SOUTH CAROLINA 29730

3409-1-XX  
(SHEET 2 OF 2)

SD