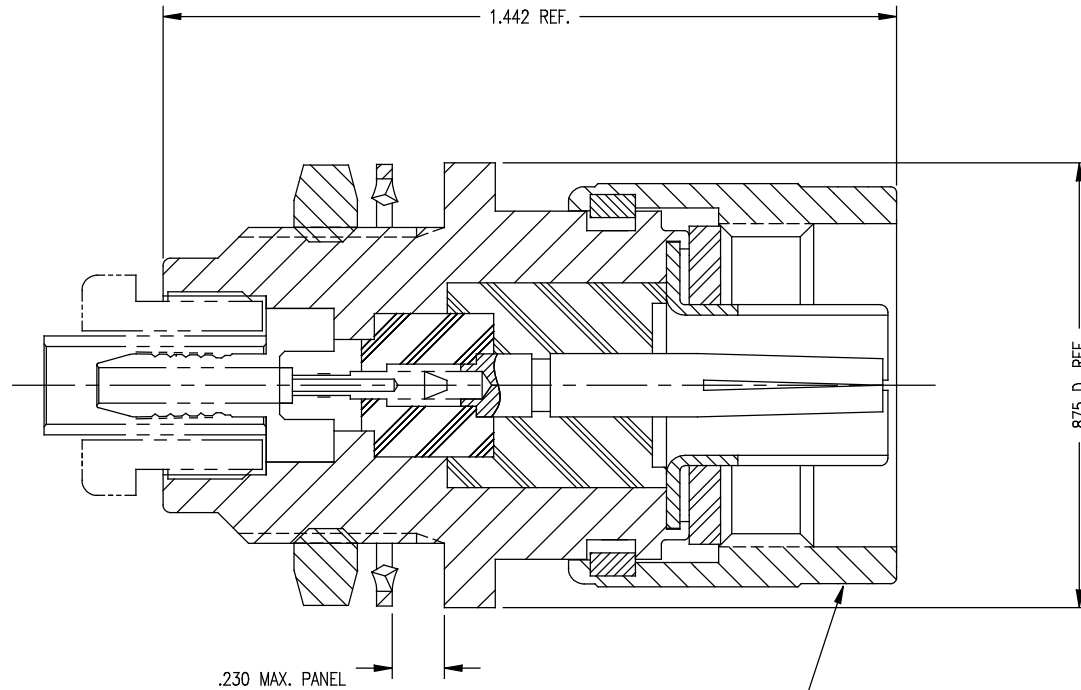


SD

2225-6-9

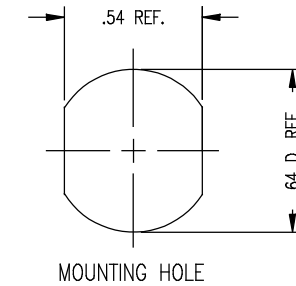


STAMP: KINGS 2225-6-9
YRWK (DATE CODE)

NOTES:

- FOR USE WITH CABLE TERMINATION KIT 3208-1-9 SUPPLIED SEPARATELY.
- FOR CABLING INSTRUCTIONS SEE 3-673.
- INTERFACE PER KINGS ES-43, FIG.1
- MATERIALS:
INSULATOR: TEFLON, ASTM-D-4894
GASKET: SILICONE RUBBER, ZZ-R-765
LOCK WASHER: PHOS. BRONZE, ASTM-B-103
FEMALE-FEMALE CENTER CONTACT: BER. COPPER, ASTM-B-196
ALL OTHER METAL PARTS: BRASS, ASTM-B16
- FINISHES:
CENTER CONTACTS: HARD GOLD PLATE, PER MIL-G-45204
ALL OTHER METAL PARTS: NICKLE PLATE PER QQ-N-290

- ELECTRICAL CHARACTERISTICS:
NOMINAL IMPEDANCE: 50 OHMS
FREQUENCY RANGE: DC TO 11 GHz
WORKING VOLTAGE: 1000 VRMS
- MARK PACKAGE: KINGS 2225-6-9
YRWK (DATE CODE)



REVISIONS

ISSUE	CHANGES
0	ER 37969 HVN 01/13/00
1	CN 38035 E HVN 07/06/00

2225-6-9S

SCALE 4:1

APPROX SURFACE AREA

WAS E-19790

USED ON

REF:

N, PL, POL

DRAWN HVN DATE 08/31/99

DESIGN HVN DATE 08/31/99

APPR. DATE

KINGS

ELECTRONICS CO., INC.
ROCK HILL, SOUTH CAROLINA 29730

SD

2225-6-9