

RF Characteristics

- DC-40 GHz
- Low Power
- 1M Life Cycles

Frequency GHz	VSWR (max)	Isolation dB (min)	Ins. Loss dB (max)
DC-6	1.30	80	0.30
6-12	1.40	70	0.40
12-18	1.50	65	0.50
18-26.5	1.70	60	0.70
26.5-40	1.80	55	0.80



Specifications

Operating Voltage (across temperature range):

12 Vdc (11-14 Vdc)
28 Vdc (24-32 Vdc)

Coil Current (typ. @ nom. Vdc & 25°C)*:

12 Vdc 440 mA
24 Vdc 220 mA
28 Vdc 190 mA

Switching Time:

20 ms maximum

Operating Temperature:

-25°C to +65°C (Standard)
-55°C to +85°C (Extended "T" Option)

Mechanical Life Cycles:

1,000,000 minimum

Vibration, Operating:

10 G RMS, 20-2000 Hz

Mechanical Shock, Non-Operating:

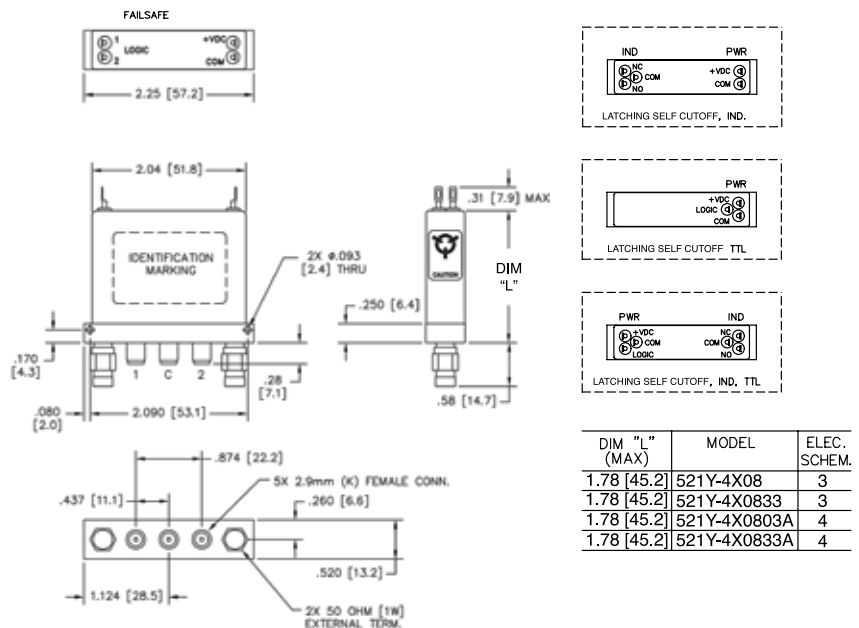
50 G, 1/2 Sine, 11 ms

Nominal Weight*:

2.5 oz. (71 g.)

* Performance and weight varies depending on selected options.

Mechanical



521Y-421103A shown

For Electrical Schematic, see page # 1-14

Part Number Selector

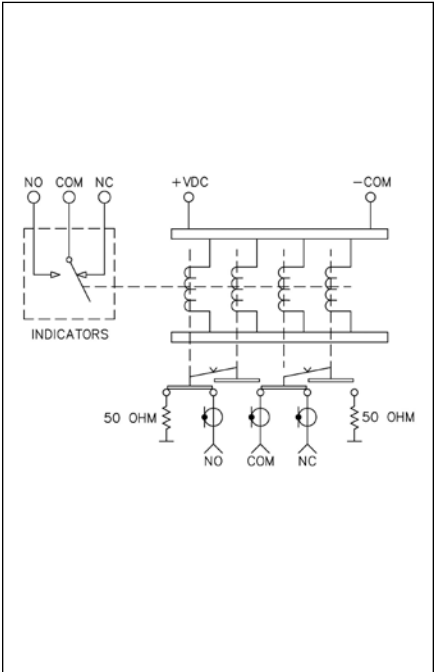
521 J Y - 4 2 11 03 A - ROHS

Special Options	Actuator	Coil Voltage	Connectors	Indicators	Circuit Options
I = Immersion Seal	4 = Latching Self	2 = 12 Vdc	11 = 2.9 mm	02 = No Indicators, Underterminated Ports*	A = TTL High
J = 'D' Connector	Cutoff	3 = 28 Vdc		03 = No Indicators, 1W External Terminations	L = TTL Low
R = Common Positive		8 = 24 Vdc		32 = Indicators, Underterminated Ports	
T = -55°C to +85°C		9 = 15 Vdc		33 = Indicators, 1W External Terminations	

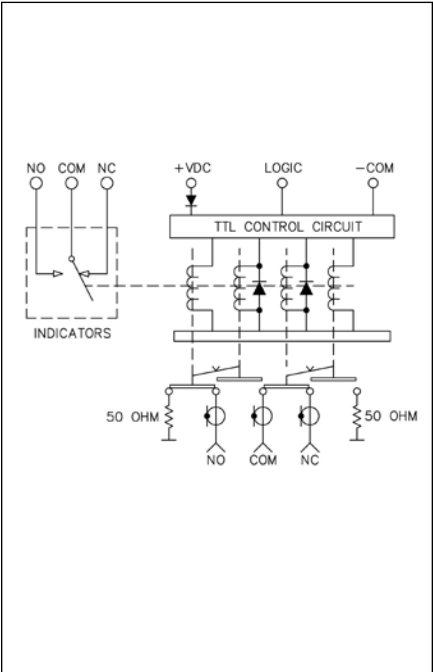
*Declared only with Circuit Options

Note: TTL option includes suppression diode. Other options may be available and all combinations may not be possible. Please consult with factory.

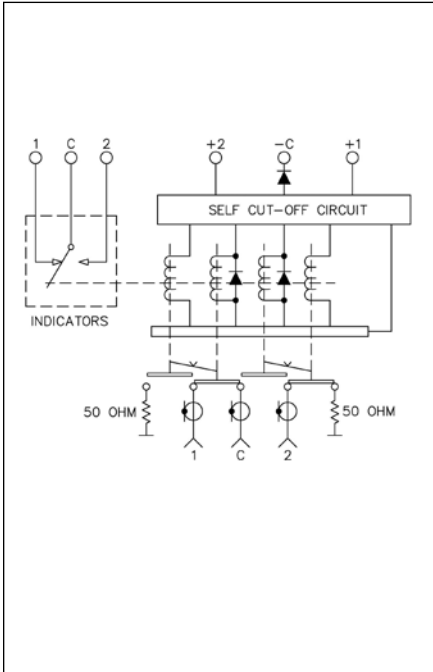
01 521U/521Y Failsafe



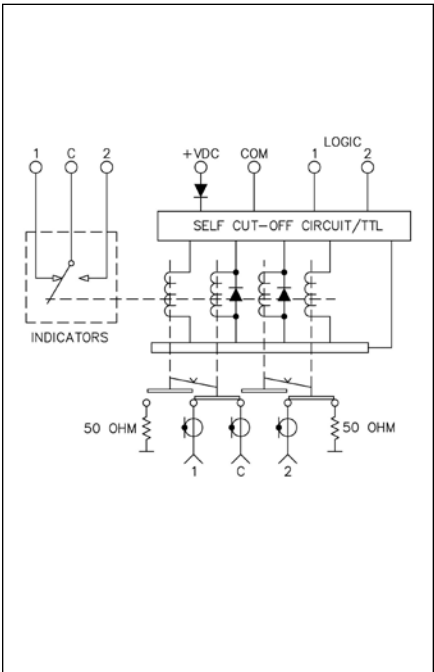
02 521U/521Y Failsafe TTL



03 521U/521Y Self Cutoff



04 521U/521Y Self Cutoff TTL



05 521U/521Y Logic Truth Table

FAILSAFE TTL - SCH #2

LOGIC TRUTH TABLE		
RF PATH	INDICATOR PATH	LOGIC INPUT
NC-COM	NC-COM	0
NO-COM	NO-COM	1

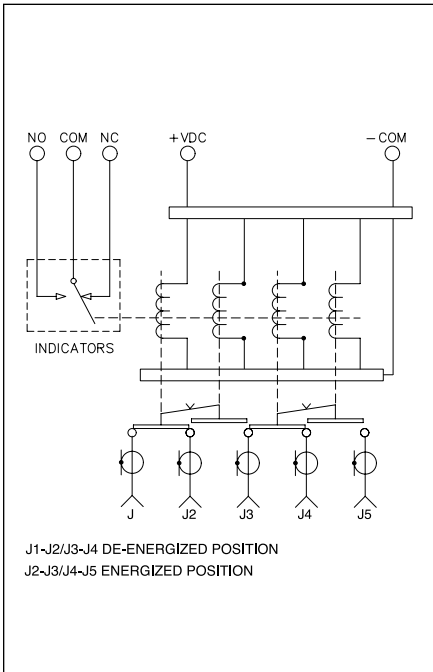
LOGIC HI (ON) 1 = 2.4-5.5Vdc
LOGIC LOW (OFF) 0 = 0-0.8Vdc

SELF CUTOFF TTL - SCH #4

LOGIC TRUTH TABLE		
RF PATH	LOGIC INPUT "1"	LOGIC INPUT "2"
C-1	1	0
C-2	0	1

LOGIC HI (ON) = 2.4-5.5Vdc
LOGIC LOW (OFF) = 0-0.8Vdc

06 521U Unterminated



Note: Diagram shown as Failsafe Unterminated. Consult with factory for other options.