

THIS PRODUCT MANUFACTURED WITH LEAD-FREE PROCESSING

DESIGNED & DIMENSIONED IN MILLIMETERS [INCHES]

DO NOT SCALE FROM THIS PRINT

DIN7A-PP-C-XX-ST-CA3

SERIES
7A: 75 OHM DIN 1.0/2.3

STYLE
-P: PUSH PULL

GENDER
-P: PLUG

TYPE
-C: CABLE

TERMINATION
-CA3: CABLE (RG179)

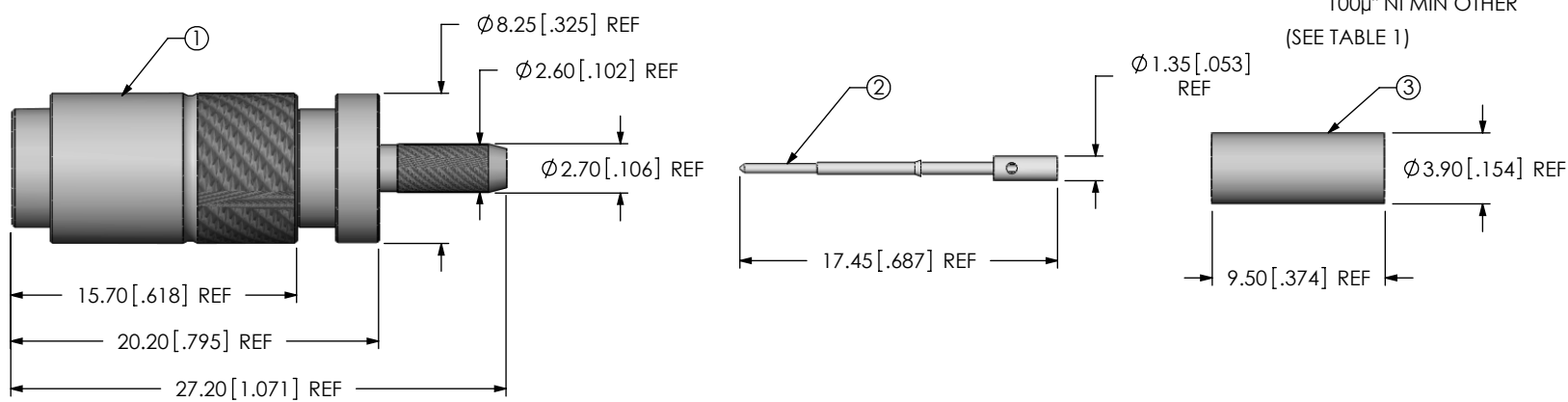
ORIENTATION
-ST: STRAIGHT

PLATING SPECIFICATION **C**
-GF: GOLD/FLASH GOLD/NICKEL
10µ" AU / 50µ" NI MIN ON CENTER CONTACT,
3µ" AU / 50µ" NI MIN ON OUTER CONTACT,
100µ" NI MIN OTHER

-GG: GOLD/GOLD/NICKEL
10µ" AU / 50µ" NI MIN ON CENTER CONTACT,
10µ" AU / 50µ" NI MIN ON OUTER CONTACT,
100µ" NI MIN OTHER

-HH: HEAVY GOLD/HEAVY GOLD/NICKEL
30µ" AU / 50µ" NI MIN ON CENTER CONTACT,
30µ" AU / 50µ" NI MIN ON OUTER CONTACT,
100µ" NI MIN OTHER

-HF: HEAVY GOLD/FLASH GOLD/NICKEL
30µ" AU / 50µ" NI MIN ON CENTER CONTACT,
3µ" AU / 50µ" NI MIN ON OUTER CONTACT,
100µ" NI MIN OTHER



(SEE TABLE 1)

TABLE 1

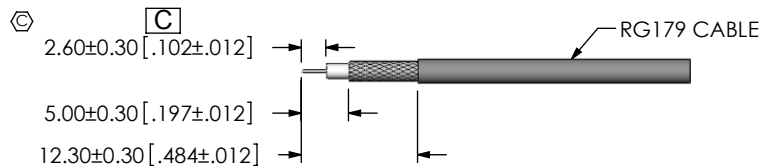
ITEM	COMPONENT	-GF	-GG	-HH	-HF
1	SUB ASSEMBLY	SUB-DIN7A-PP-C-FN-ST-CA3	SUB-DIN7A-PP-C-GN-ST-CA3	SUB-DIN7A-PP-C-HN-ST-CA3	SUB-DIN7A-PP-C-FN-ST-CA3
2	PIN	DIN7A-P-C-G-ST-CA3-PIN		DIN7A-P-C-H-ST-CA3-PIN	
3	FERRULE	SMA-FER-001-N			

NOTES:

- ① REPRESENTS A CRITICAL DIMENSION.
- CENTER CONTACT PUSHOUT FORCE: 26.69 N [6 LB] MIN.
- NOTE DELETED.
- PRODUCT TO BE PACKAGED PER PACKAGING STANDARD CO-HD-WI-3040-M.
- NOTE DELETED.
- NOTE DELETED.
- NOTE DELETED.

UNLESS OTHERWISE SPECIFIED, DIMENSIONS ARE IN MILLIMETERS [INCHES]. TOLERANCES ARE: DECIMALS ANGLES .X: ±0.3 [.01] 5° .XX: ±0.13 [.005] .XXX: ±0.051 [.0020] C	PROPRIETARY NOTE THIS DOCUMENT CONTAINS INFORMATION CONFIDENTIAL AND PROPRIETARY TO SAMTEC, INC. AND SHALL NOT BE REPRODUCED OR TRANSFERRED TO OTHER DOCUMENTS OR DISCLOSED TO OTHERS OR USED FOR ANY PURPOSE OTHER THAN THAT WHICH IT WAS OBTAINED WITHOUT THE EXPRESSED WRITTEN CONSENT OF SAMTEC, INC.	520 PARK EAST BLVD, NEW ALBANY, IN 47150 PHONE: 812-944-6733 FAX: 812-948-5047 e-Mail: info@SAMTEC.com code: 55322
	MATERIAL: DO NOT SCALE DRAWING SHEET SCALE: 2:1 SHELL, FERRULE: BRASS CONTACT: BRASS GASKET: SILICONE DIELECTRIC: PTFE	
BY: TALON Z 02/22/2010		SHEET 1 OF 2

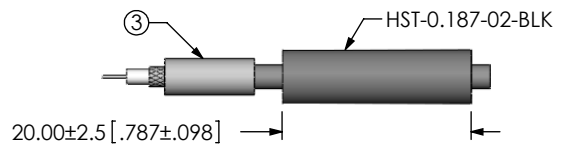
REVISION C



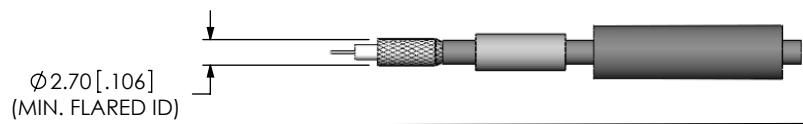
IN-PROCESS 1
STRIP AND TIN INNER
CONDUCTOR

Ⓢ Ⓢ
Ⓢ

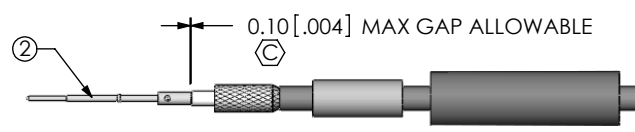
IN-PROCESS 2
ADD HEAT SHRINK TUBE
AND FERRULE



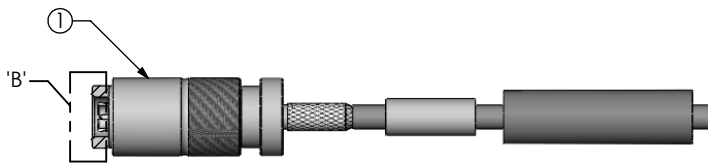
IN-PROCESS 3
FLARE SHIELD



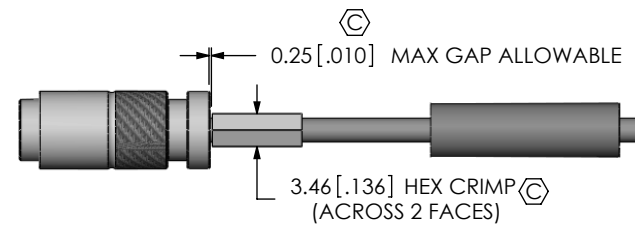
IN-PROCESS 4
SOLDER SIGNAL PIN



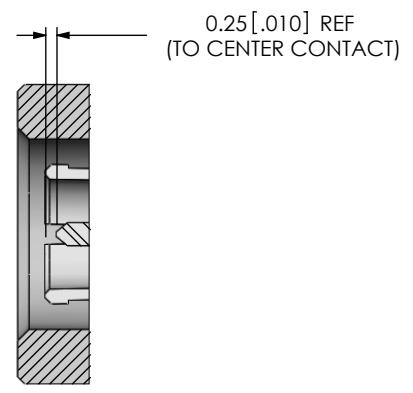
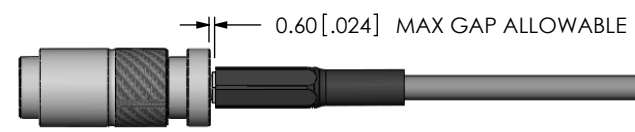
IN-PROCESS 5
ADD SUB-DIN7A-PP-C-XX-ST-CA3



IN-PROCESS 6
CRIMP FERRULE
(USE RF CRIMP HAND TOOL #CAT-HT-126667-21
OR EQUIVALENT)
(USE .136" HEX DIE)



IN-PROCESS 7
APPLY HEAT SHRINK TUBE



DETAIL 'B'
SCALE 6 : 1

Ⓢ

PROPRIETARY NOTE

THIS DOCUMENT CONTAINS INFORMATION
CONFIDENTIAL AND PROPRIETARY TO
SAMTEC, INC. AND SHALL NOT BE REPRODUCED
OR TRANSFERRED TO OTHER DOCUMENTS OR
DISCLOSED TO OTHERS OR USED FOR ANY
PURPOSE OTHER THAN THAT WHICH IT WAS
OBTAINED WITHOUT THE EXPRESSED WRITTEN
CONSENT OF SAMTEC, INC.

DO NOT SCALE DRAWING

SHEET SCALE: 1.25:1



520 PARK EAST BLVD, NEW ALBANY, IN 47150
PHONE: 812-944-6733 FAX: 812-948-5047
e-Mail: info@SAMTEC.com code: 55322

DESCRIPTION:
TRUE 75 OHM, DIN ST PLUG, RG179

DWG. NO.
DIN7A-PP-C-XX-ST-CA3

BY: TALON Z 02/22/2010 SHEET 2 OF 2