

February 1985

## Hex Inverters with Open-Drain Outputs

OBJECTIVE  
SPECIFICATIONS

### Features

- **Function, pin-out, speed and drive compatibility with 54/74ALS logic family**
- **Low power consumption characteristic of CMOS**
- **High-Drive-Current outputs:**  
 $I_{OL} = 8 \text{ mA} @ V_{OL} = 0.5\text{V}$
- **Inputs and outputs interface directly with TTL, NMOS and CMOS devices**
- **Wide operating voltage range: 4.5V to 5.5V**
- **Characterized for operation over industrial and military temperature ranges:**  
74AHCT:  $-40^{\circ}\text{C}$  to  $+85^{\circ}\text{C}$   
54AHCT:  $-55^{\circ}\text{C}$  to  $+125^{\circ}\text{C}$

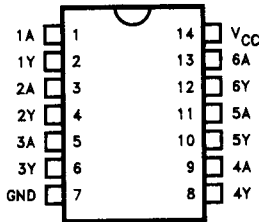
### Description

These devices contain six independent inverters with open-drain outputs. Using a suitable pull-up resistor, these outputs may be connected to other open-drain outputs to implement wired-AND functions.

Fabricated using Zytrex's proprietary ICE-MOS process, these devices provide speeds and drive capability equivalent to their ALSTTL counterparts and yet maintain CMOS power levels. The input and output voltage levels allow direct interface with TTL, NMOS and CMOS devices without any external components.

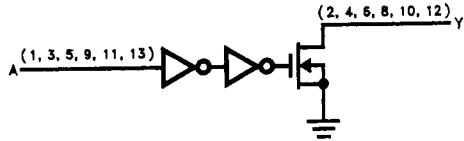
All inputs and outputs are protected from damage due to static discharge by internal diode clamps to  $V_{CC}$  and ground.

### Pin Configuration



0008-1

### Logic Diagram



0008-2

### Function Table

(Each Inverter)

Input A	Output Y
H	L
L	H

## Absolute Maximum Ratings\*

Supply Voltage Range,  $V_{CC}$  ..... -0.5V to 7V  
 DC Input Diode Current,  $I_{IK}$   
 ( $V_I < -0.5V$  or  $V_I > V_{CC} + 0.5V$ ) .....  $\pm 20$  mA  
 DC Output Diode Current,  $I_{OK}$   
 ( $V_O < -0.5V$  or  $V_O > V_{CC} + 0.5V$ ) .....  $\pm 20$  mA  
 Continuous Output Current Per Pin,  $I_O$   
 ( $-0.5V < V_O < V_{CC} + 0.5V$ ) .....  $\pm 35$  mA  
 Continuous Current Through  
 $V_{CC}$  or GND pins .....  $\pm 125$  mA  
 Storage Temperature Range,  $T_{STG}$  .. -65°C to +150°C  
 Power Dissipation Per Package,  $P_D$ † ..... 500 mW

\*Absolute Maximum Ratings are those values beyond which permanent damage to the device may occur. These are stress ratings only and functional operation of the device at or beyond them is not implied. Long exposure to these conditions may affect device reliability.

† Power Dissipation temperature derating:  
 Plastic Package (N): -12 mW/°C from 65°C to 85°C  
 Ceramic Package (J): -12 mW/°C from 100°C to 125°C

## Recommended Operating Conditions

Supply Voltage,  $V_{CC}$  ..... 4.5V to 5.5V  
 DC Input & Output Voltages\*,  $V_{IN}$ ,  $V_{OUT}$  ..... 0V to  $V_{CC}$   
 Operating Temperature  
 Range  
 ZX74AHCT: -40°C to +85°C  
 ZX54AHCT: -55°C to +125°C  
 Input Rise & Fall Times,  $t_r$ ,  $t_f$  ..... Max 500 ns

\*Unused inputs must always be tied to an appropriate logic voltage level (either  $V_{CC}$  or GND)

## DC Electrical Characteristics ( $V_{CC} = 5V \pm 10\%$ Unless Otherwise Specified)

Symbol	Parameter	Test Conditions	$T_A = 25^\circ C$		74AHCT	54AHCT	Unit
			Typ	Guaranteed Limits		$T_A = -40^\circ C$ to $+85^\circ C$	
$V_{IH}$	Minimum High-Level Input Voltage			2.0	2.0	2.0	V
$V_{IL}$	Maximum Low-Level Input Voltage			0.8	0.8	0.8	V
$V_{OL}$	Maximum Low-Level Output Voltage	$V_{IN} = V_{IH}$ or $V_{IL}$ $I_O = 20 \mu A$ $I_O = 4$ mA $I_O = 8$ mA	0	0.1 0.26 0.39	0.1 0.33 0.5	0.1 0.4	V
$I_{IN}$	Maximum Input Current	$V_{IN} = V_{CC}$ or GND		$\pm 0.1$	$\pm 1.0$	$\pm 1.0$	$\mu A$
$I_{OZ}$	Maximum Output Leakage Current	$V_{IN} = V_{IH}$ or $V_{IL}$ $V_{OUT} = V_{CC}$		$\pm 0.5$	$\pm 5.0$	$\pm 10.0$	$\mu A$
$I_{CC}$	Maximum Quiescent Supply Current	$V_{IN} = V_{CC}$ or GND $I_{OUT} = 0 \mu A$		2.0	20.0	40.0	$\mu A$

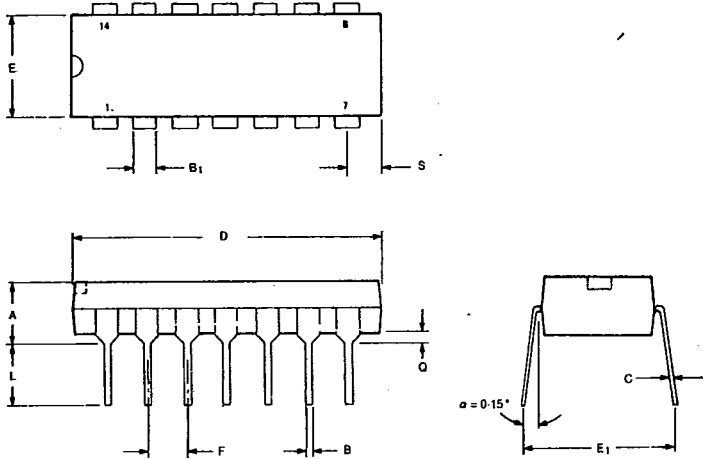
## AC Electrical Characteristics (Input $t_r$ , $t_f \leq 2$ ns), AHCT05

Symbol	Parameter	Conditions†	$T_A = 25^\circ C$	74AHCT	54AHCT	Unit
			$V_{CC} = 5.0V$	$T_A = -40^\circ C$ to $+85^\circ C$ $V_{CC} = 5.0V \pm 10\%$	$T_A = -55^\circ C$ to $+125^\circ C$ $V_{CC} = 5.0V \pm 10\%$	
			Typ	Guaranteed Limits		
$t_{PLH}$	Maximum Propagation Delay	$C_L = 50$ pF $R_L = 1$ k $\Omega$	18	31	37	ns
$t_{PHL}$			8	14	33	
$C_{IN}$	Maximum Input Capacitance		5			pF
$C_{PD}$	Power Dissipation Capacitance* (per inverter)		15			pF

\* $C_{PD}$  determines the no-load dynamic power dissipation:  $P_D = C_{PD} V_{CC}^2 f + I_{CC} V_{CC}$ .  
 †For AC switching test circuits and timing waveforms see section 2.

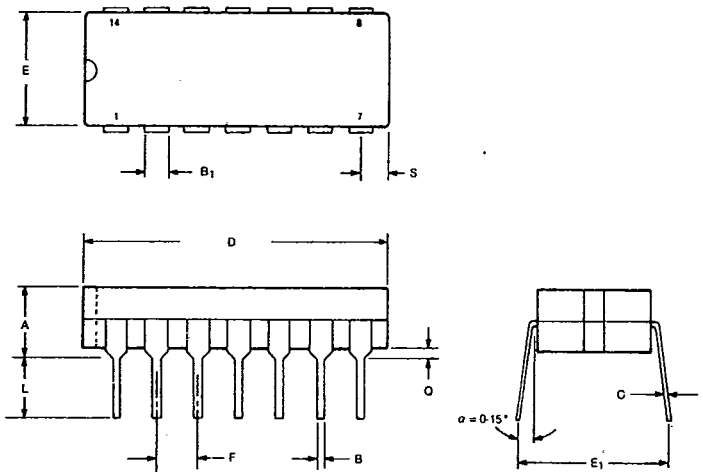
14-Pin Packages

Plastic Package



DIM	Millimeters		Inches	
	Min	Max	Min	Max
A	3.81	5.08	0.150	0.200
B	0.38	0.58	0.015	0.023
B <sub>1</sub>	1.40	1.78	0.055	0.070
C	0.20	0.38	0.008	0.015
D	18.16	19.56	0.715	0.770
E	6.10	7.49	0.240	0.295
E <sub>1</sub>	7.62	10.03	0.300	0.395
F	2.54		0.100	
L	3.18	4.19	0.125	0.165
Q	0.51	1.02	0.020	0.040
S	1.91	2.29	0.075	0.090

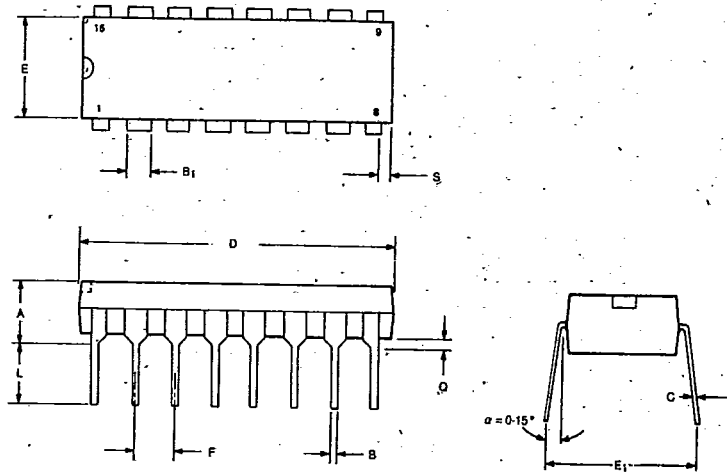
Ceramic Package



DIM	Millimeters		Inches	
	Min	Max	Min	Max
A	—	5.08	—	0.200
B	0.38	0.58	0.015	0.023
B <sub>1</sub>	1.40	1.78	0.055	0.070
C	0.20	0.38	0.008	0.015
D	19.05	19.94	0.750	0.785
E	6.10	7.49	0.240	0.295
E <sub>1</sub>	7.62	10.03	0.300	0.395
F	2.54		0.100	
L	3.18	4.19	0.125	0.165
Q	0.51	1.02	0.020	0.040
S	1.91	2.29	0.075	0.090

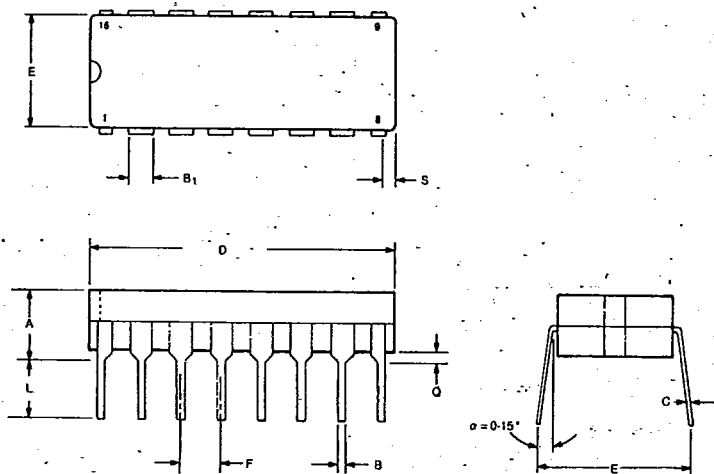
16-Pin Packages

Plastic Package



DIM	Millimeters		Inches	
	Min	Max	Min	Max
A	3.81	4.32	0.150	0.170
B	0.38	0.58	0.015	0.023
B <sub>1</sub>	1.40	1.78	0.055	0.070
C	0.20	0.38	0.008	0.015
D	19.05	19.94	0.750	0.785
E	6.10	7.49	0.240	0.295
E <sub>1</sub>	7.62	8.89	0.300	0.350
F	2.54		0.100	
L	3.18	4.19	0.125	0.165
Q	0.51	1.02	0.020	0.040
S	1.91	2.29	0.075	0.090

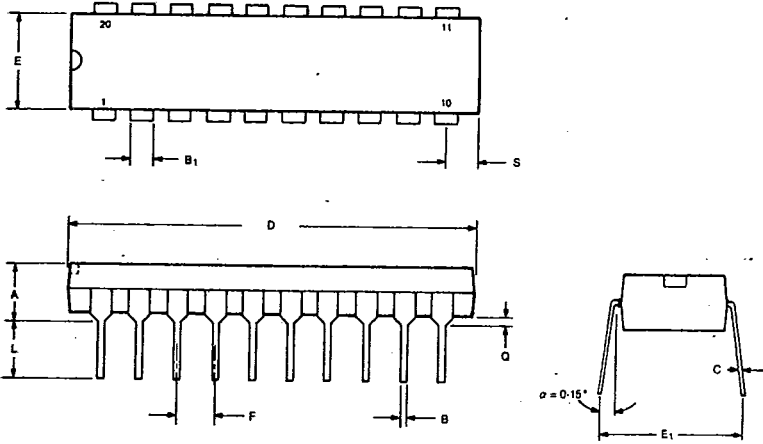
Ceramic Package



DIM	Millimeters		Inches	
	Min	Max	Min	Max
A	—	5.08	—	0.200
B	0.38	0.58	0.015	0.023
B <sub>1</sub>	1.40	1.78	0.055	0.070
C	0.20	0.38	0.008	0.015
D	19.05	19.94	0.750	0.785
E	6.10	7.49	0.240	0.295
E <sub>1</sub>	7.62	10.03	0.300	0.395
F	2.54		0.100	
L	3.18	4.19	0.125	0.165
Q	0.51	1.02	0.020	0.040
S	1.51	1.14	0.020	0.045

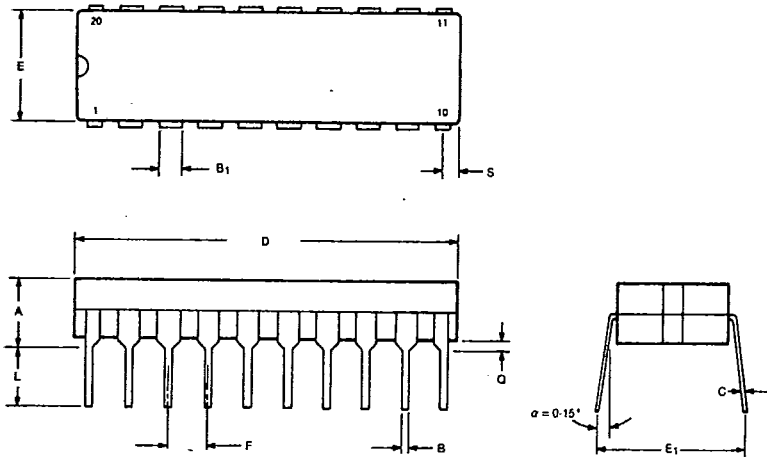
20-Pin Packages

Plastic Package



DIM	Millimeters		Inches	
	Min	Max	Min	Max
A	4.06	5.08	0.160	0.200
B	0.38	0.53	0.015	0.021
B <sub>1</sub>	1.14	1.52	0.045	0.060
C	0.20	0.38	0.008	0.015
D	25.65	27.18	1.010	1.070
E	6.10	6.60	0.240	0.260
E <sub>1</sub>	7.77	8.89	0.306	0.350
F	2.54		0.100	
L	3.30	4.01	0.130	0.158
Q	0.38	0.89	0.015	0.035
S	1.85	1.93	0.073	0.076

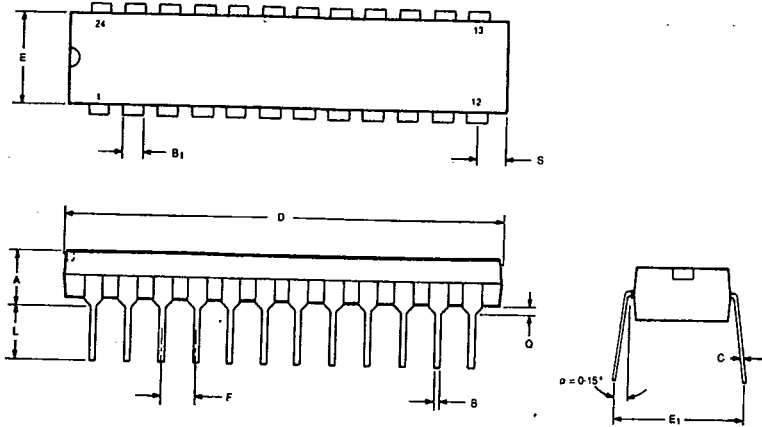
Ceramic Package



DIM	Millimeters		Inches	
	Min	Max	Min	Max
A	4.06	5.08	0.160	0.200
B	0.38	0.53	0.015	0.021
B <sub>1</sub>	1.14	1.52	0.045	0.060
C	0.20	0.38	0.008	0.015
D	25.78	25.93	1.015	1.021
E	6.10	6.60	0.240	0.260
E <sub>1</sub>	7.77	7.98	0.306	0.314
F	2.54		0.100	
L	3.73	4.01	0.147	0.158
Q	0.38	0.89	0.015	0.035
S	0.51	1.14	0.020	0.045

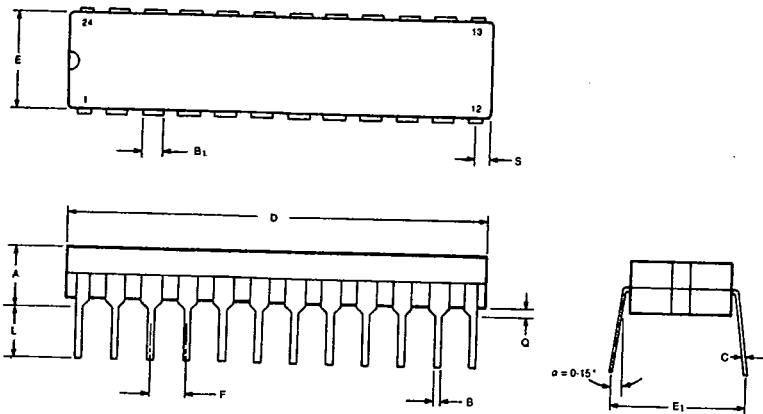
24-Pin Packages

Plastic Package



DIM	Millimeters		Inches	
	Min	Max	Min	Max
A	4.06	5.08	0.160	0.200
B	0.38	0.53	0.015	0.021
B <sub>1</sub>	1.14	1.52	0.045	0.060
C	0.20	0.38	0.008	0.015
D	31.24	32.13	1.230	1.265
E	6.10	6.60	0.240	0.260
E <sub>1</sub>	7.77	8.89	0.306	0.350
F	2.54		0.100	
L	3.30	4.01	0.130	0.158
Q	0.38	0.89	0.015	0.035
S	0.51	1.14	0.020	0.045

Ceramic Package



DIM	Millimeters		Inches	
	Min	Max	Min	Max
A	4.06	5.08	0.160	0.200
B	0.38	0.53	0.015	0.021
B <sub>1</sub>	1.14	1.52	0.045	0.060
C	0.20	0.38	0.008	0.015
D	31.50	32.64	1.240	1.285
E	7.24	7.75	0.285	0.305
E <sub>1</sub>	7.77	7.98	0.306	0.314
F	2.54		0.100	
L	3.73	4.01	0.147	0.158
Q	0.508	1.778	0.020	0.070
S	1.85	1.93	0.073	0.076