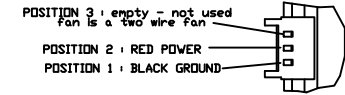


TO ORDER FAN PER THIS DRAWING USE COFAN PART # F-4007H05C-09 Rev 09  
 (NOTE, FOR ORDERING PURPOSES, PLEASE USE ENTIRE COFAN PART # INCLUDING THE REVISION)

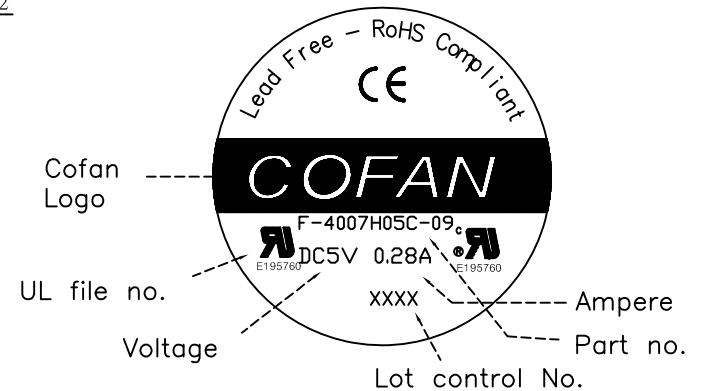
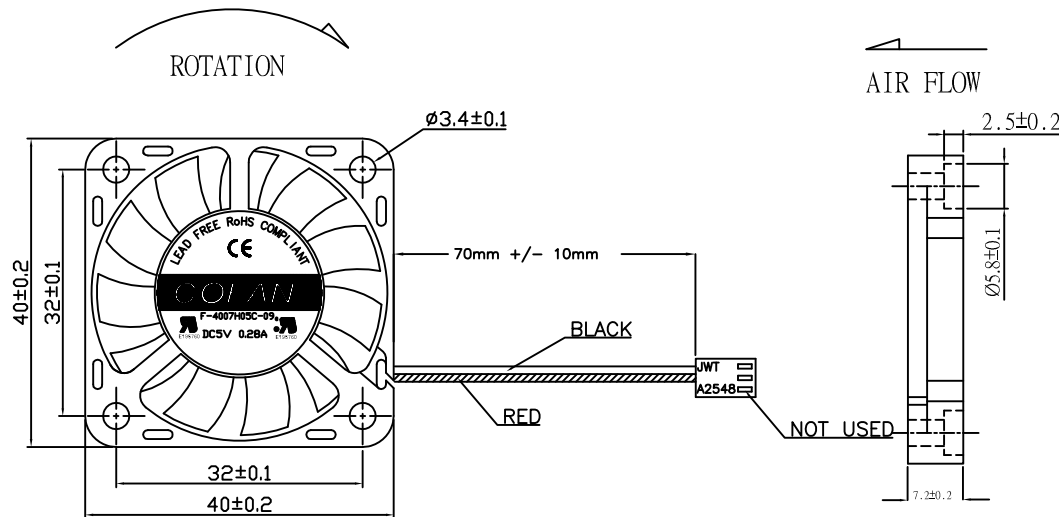
Notes:

1. Fan must be 1 ball bearing
2. Fan label must be marked with part # F-4007H05C-09
3. Fan must be MTBF of 70K Hrs @ 25C
4. IP Level: 0



UL# E195760  
 CUL# E195760  
 TUV# B 04 03 52557 002  
 CE# EN5008-1

NOTE: THIS FAN IS A TWO WIRE DC BRUSHLESS FAN



THIS DOCUMENT IS CONFIDENTIAL AND PROPRIETARY TO COFAN USA, FREMONT, CA

PARTS LIST	
①	1X FAN COFAN MODEL F-4007H05C-09
②	1X MOLEX 3 PIN CONNECTOR # 22-01-3037 or Equiv. 2X MOLEX TERMINAL 08-50-0113 - or Equiv

MODEL NO	RATED VOLTAGE V	OPERATING VOLTAGE V	RATED CURRENT A	ACTUAL CURRENT A	RATED POWER W	RATED SPEED RPM	MAX AIR FLOW				NOISE LEVEL dBA
							CMM	CFM	mmH <sub>2</sub> O	InH <sub>2</sub> O	
F-4007H05C	5	4.5~5.5	0.26	0.24	1.30	7000	0.189	6.66	2.59	0.102	33.6

DO NOT SCALE DRAWING

UNLESS OTHERWISE SPECIFIED DIMENSIONS ARE IN MILLIMETRE TOLERANCES ARE:

1 PLACE .X	± 0.4
2 PLACE .XX	± 0.25
3 PLACE .XXX	± 0.13
ANGLES EXCEPT 90°	± 1°
MAXIMUM SURFACE ROUGHNESS	125√

DRAWING NUMBER: F-4007H05C-09

MATERIAL:

FINISH:

DRAWN BY: DAN

ENGINEER:

**COFAN USA**  
 1400 Fulton Place Fremont CA 94589  
 FAN, 40x7mm, 5VDC, 1 Ball Bearing, 7000K RPM, 2 Wire

FAN PART NUMBER: F-4007H05C-09

SHEET:

REV: 09

DATE DRAWN: Mar-1-10  
 SCALE: 1:1