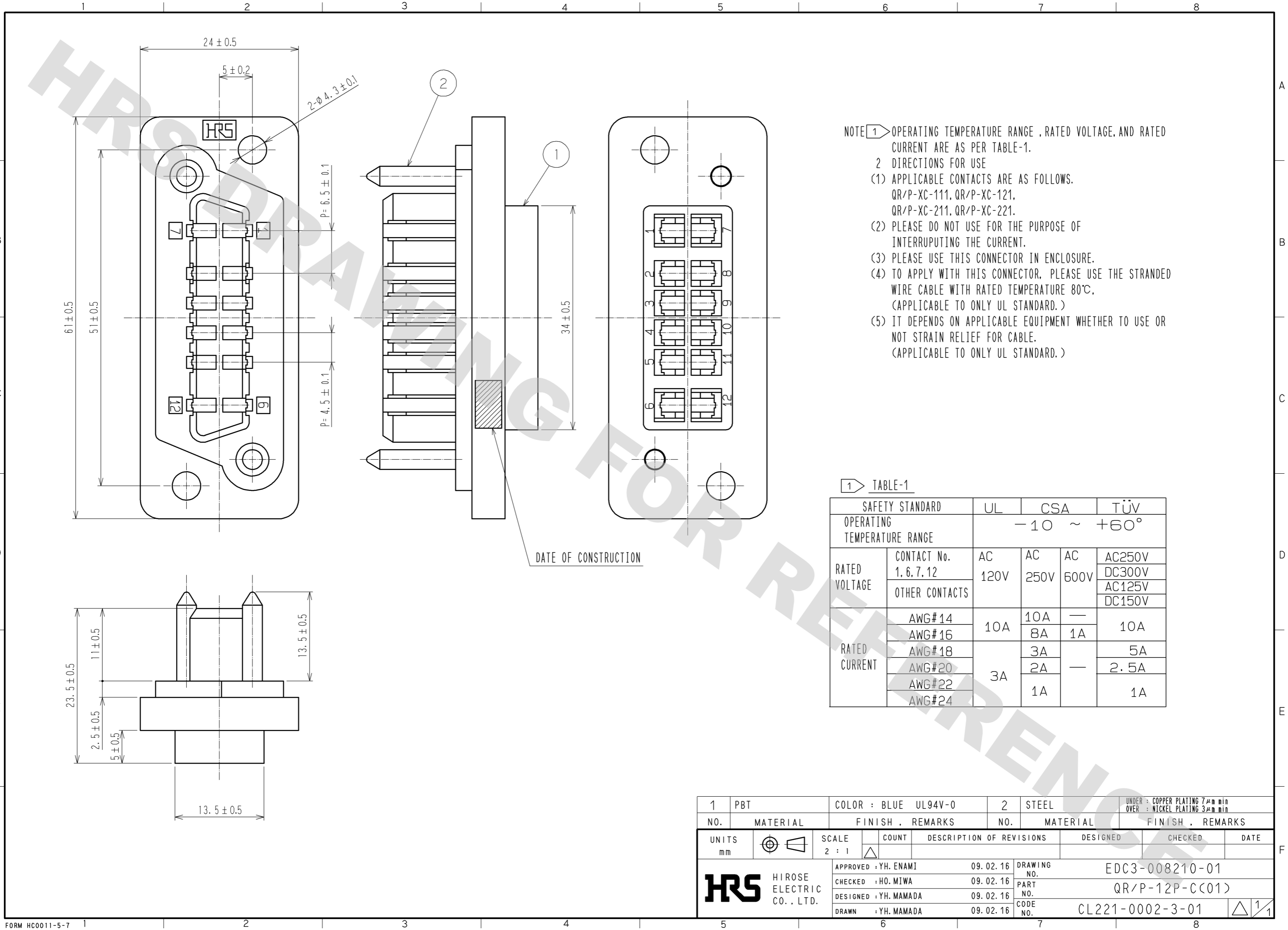


DRAWING FOR REFERENCE: This is subject to change without notice
08/11/2012



NOTE 1 OPERATING TEMPERATURE RANGE, RATED VOLTAGE, AND RATED CURRENT ARE AS PER TABLE-1.
 2 DIRECTIONS FOR USE
 (1) APPLICABLE CONTACTS ARE AS FOLLOWS.
 QR/P-XC-111, QR/P-XC-121,
 QR/P-XC-211, QR/P-XC-221.
 (2) PLEASE DO NOT USE FOR THE PURPOSE OF INTERRUPTING THE CURRENT.
 (3) PLEASE USE THIS CONNECTOR IN ENCLOSURE.
 (4) TO APPLY WITH THIS CONNECTOR, PLEASE USE THE STRANDED WIRE CABLE WITH RATED TEMPERATURE 80°C. (APPLICABLE TO ONLY UL STANDARD.)
 (5) IT DEPENDS ON APPLICABLE EQUIPMENT WHETHER TO USE OR NOT STRAIN RELIEF FOR CABLE. (APPLICABLE TO ONLY UL STANDARD.)

1 TABLE-1

SAFETY STANDARD		UL	CSA	TÜV
OPERATING TEMPERATURE RANGE		-10 ~ +60°		
RATED VOLTAGE	CONTACT No. 1, 6, 7, 12	AC 120V	AC 250V	AC 600V
	OTHER CONTACTS			
RATED CURRENT	AWG#14	10A	10A	—
	AWG#16		8A	1A
	AWG#18	3A	3A	—
	AWG#20		2A	—
	AWG#22		1A	—
AWG#24				

1	PBT	COLOR : BLUE UL94V-0	2	STEEL	UNDER : COPPER PLATING 7µm min OVER : NICKEL PLATING 3µm min
NO.	MATERIAL	FINISH . REMARKS	NO.	MATERIAL	FINISH . REMARKS
UNITS mm		SCALE 2 : 1	COUNT 	DESCRIPTION OF REVISIONS	DESIGNED
HRS HIROSE ELECTRIC CO., LTD.		APPROVED : YH. ENAMI 09.02.16	CHECKED : HO. MIWA 09.02.16	DESIGNED : YH. MAMADA 09.02.16	DRAWN : YH. MAMADA 09.02.16
				DRAWING NO.	EDC3-008210-01
				PART NO.	QR/P-12P-C(01)
				CODE NO.	CL221-0002-3-01
					1/1