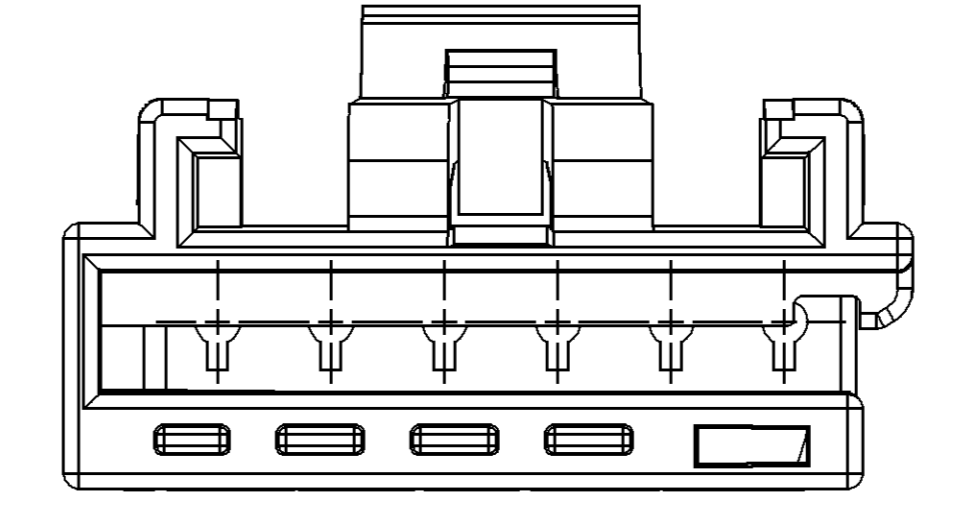
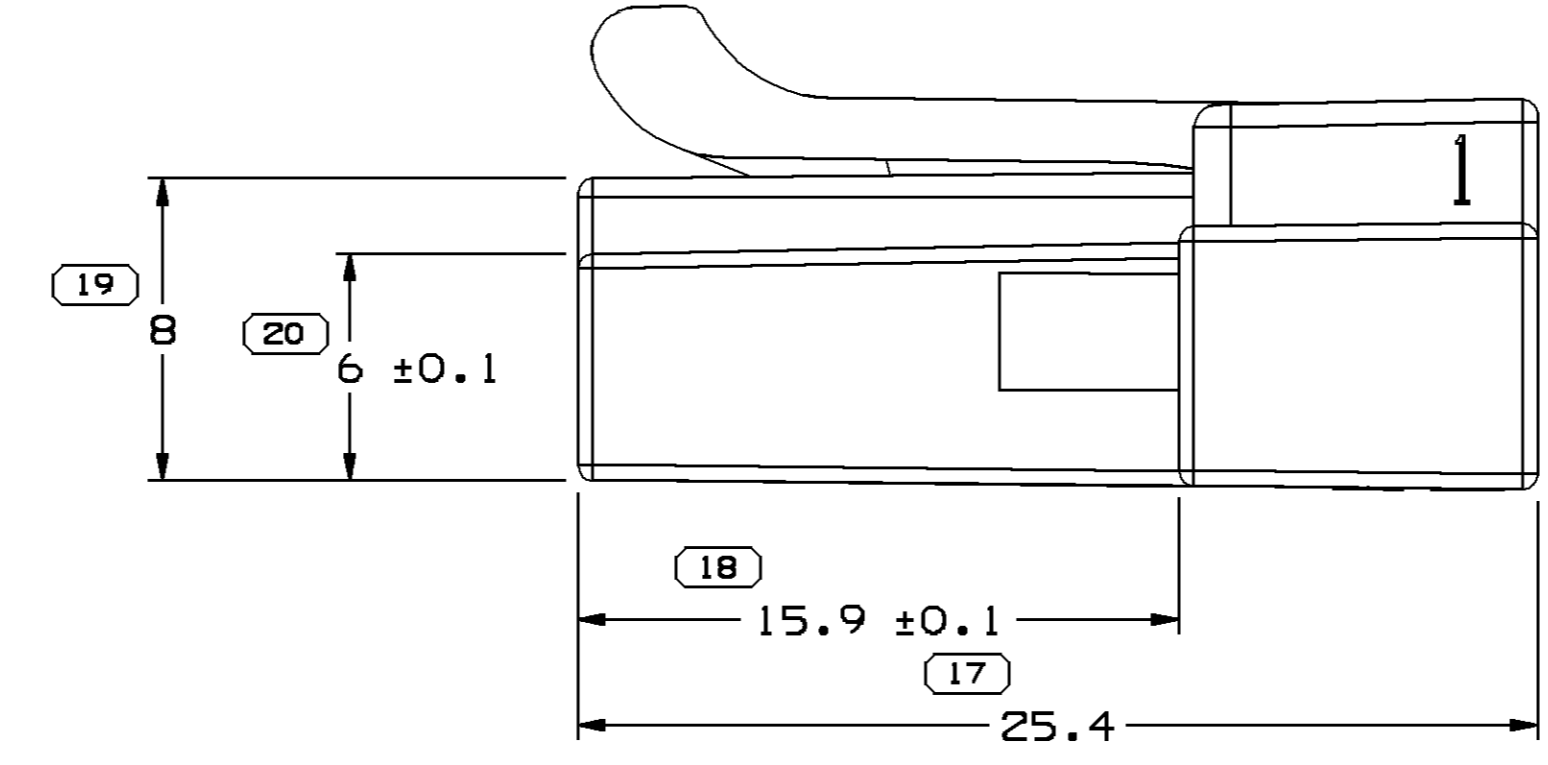
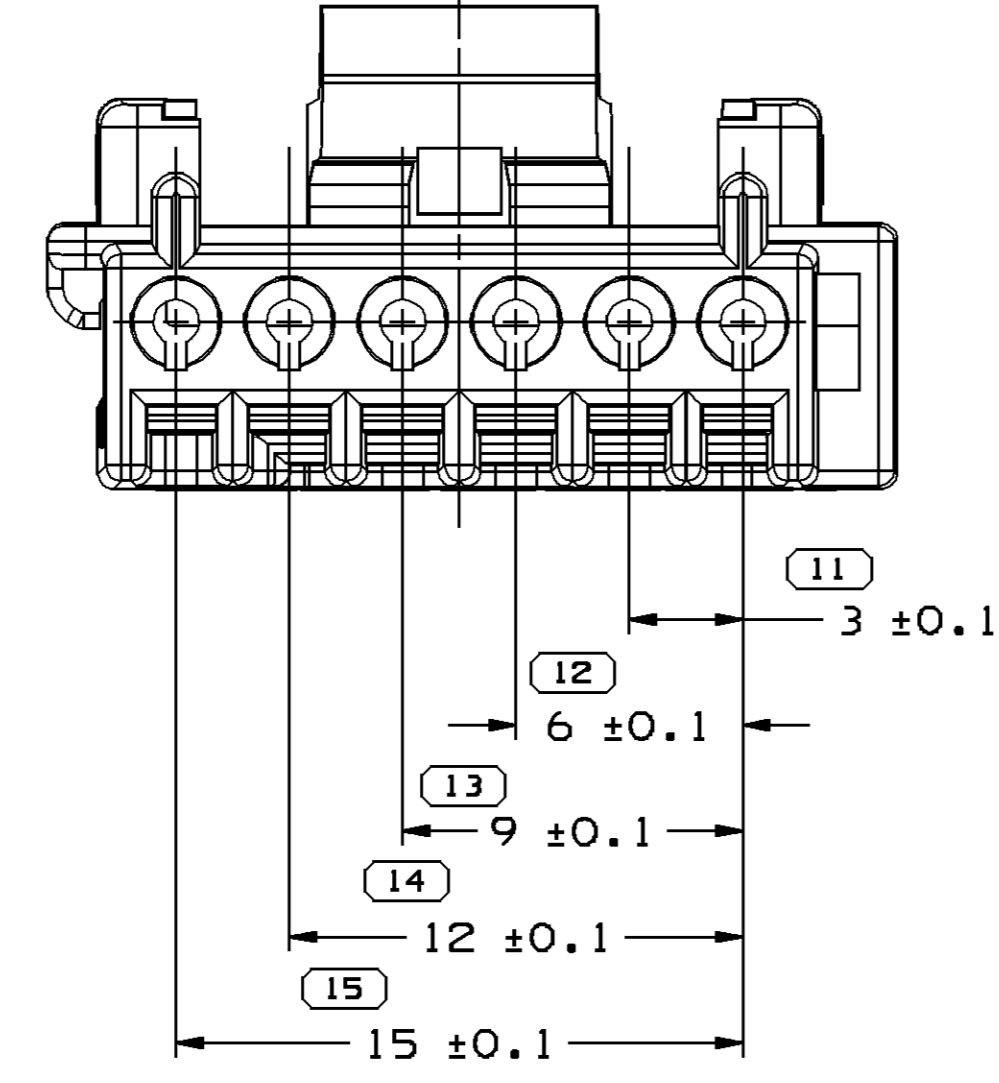
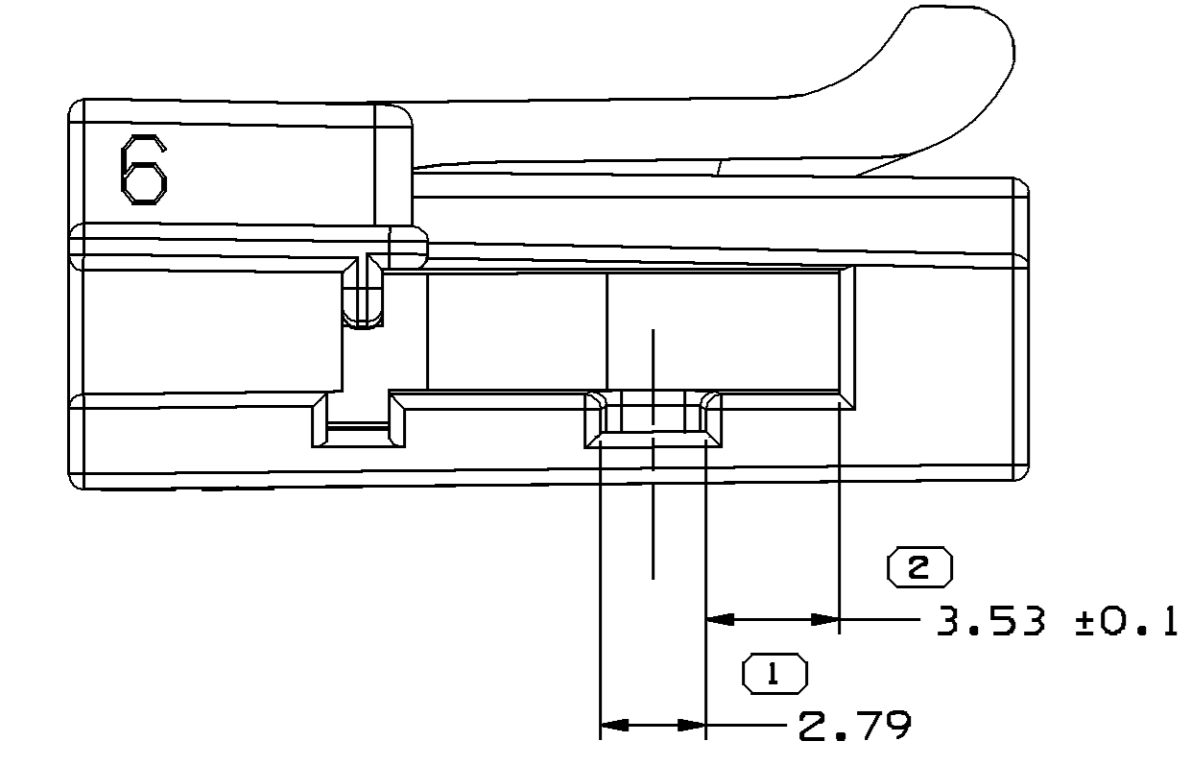
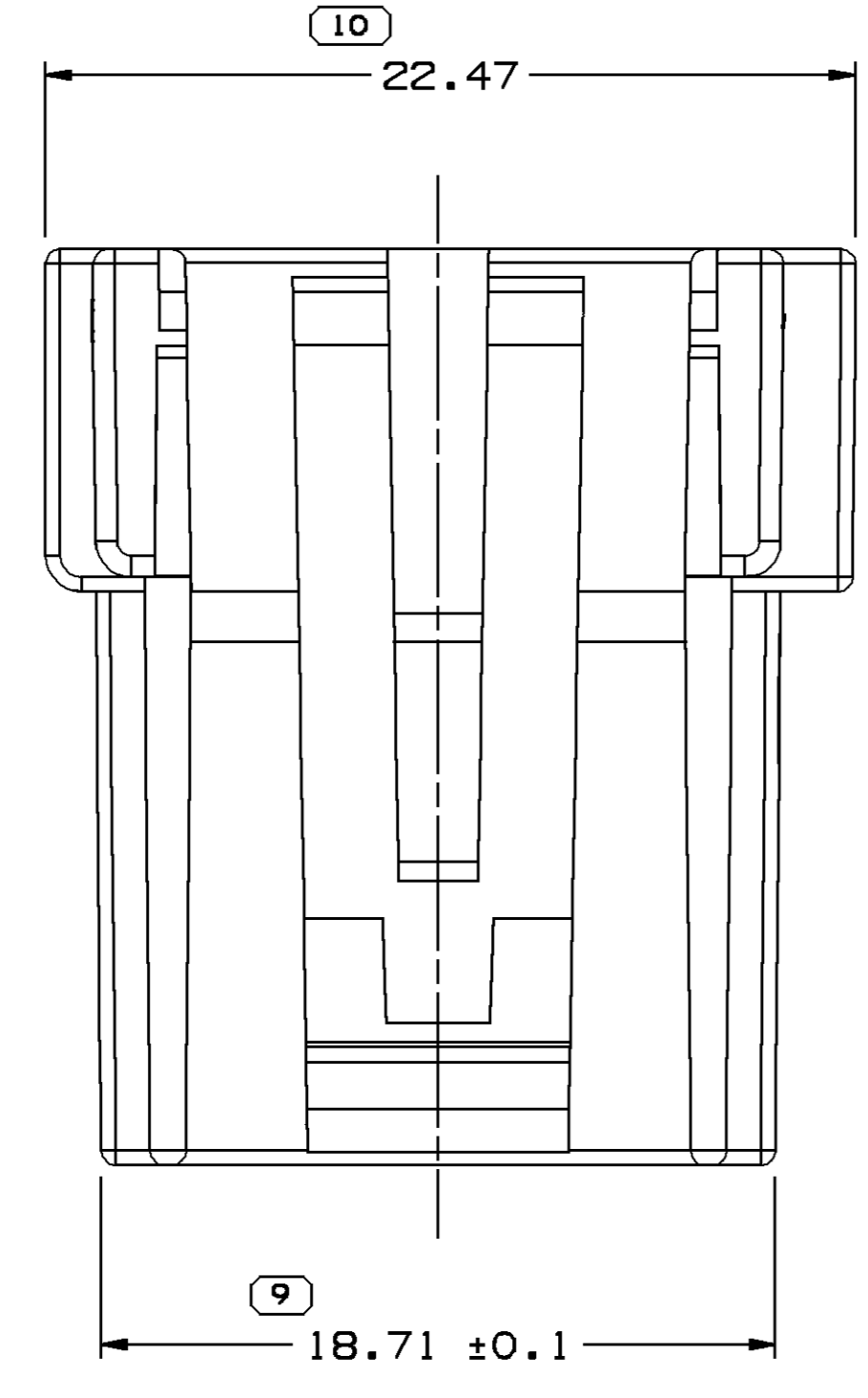


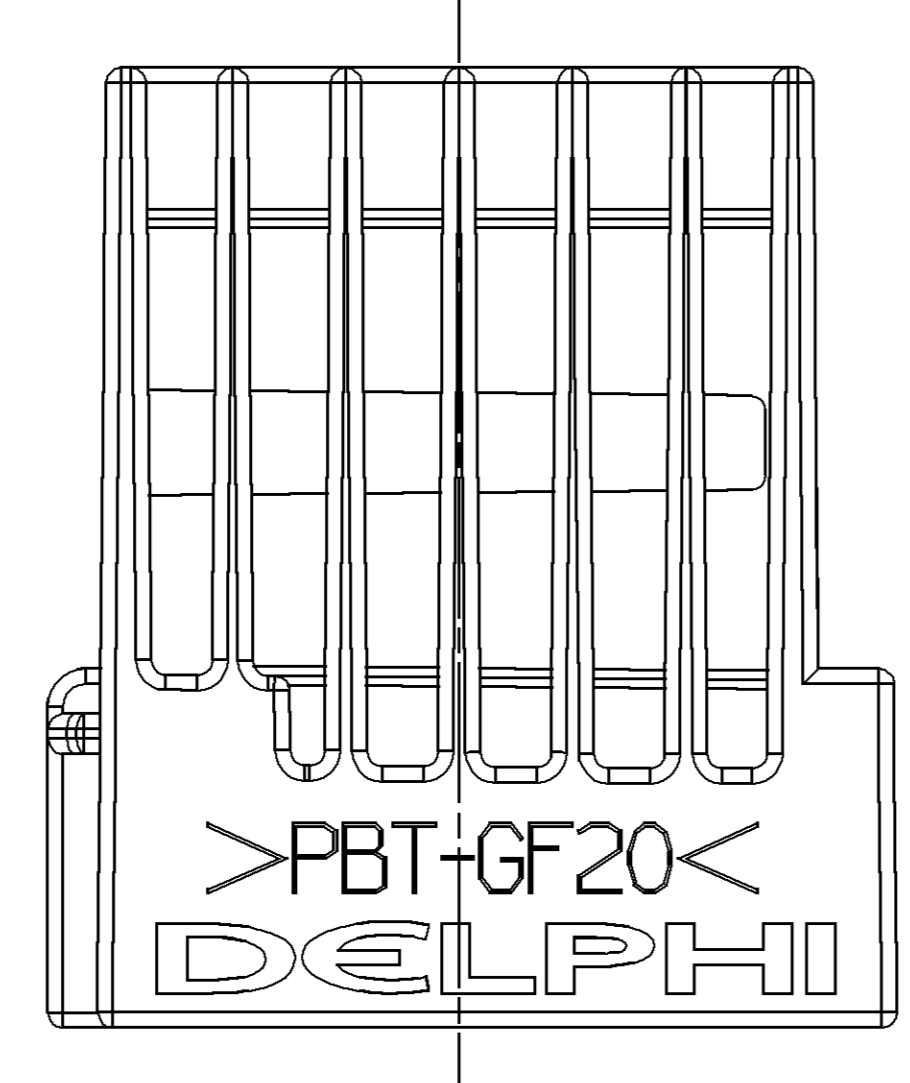
TYPE 102
SAME AS TYPE 101
EXCEPT AS SHOWN

SYMBOL DEFINITION		TOTAL NO OF INSPECTIONS REQUIRED	LAST NO. USED
A DIMENSION WITHOUT AN INSPECTION REPORT SYMBOL DOES NOT REQUIRE INSPECTION. IT MAY BE CONTROLLED ON THE INDIVIDUAL COMPONENT DRAWING.		17	20

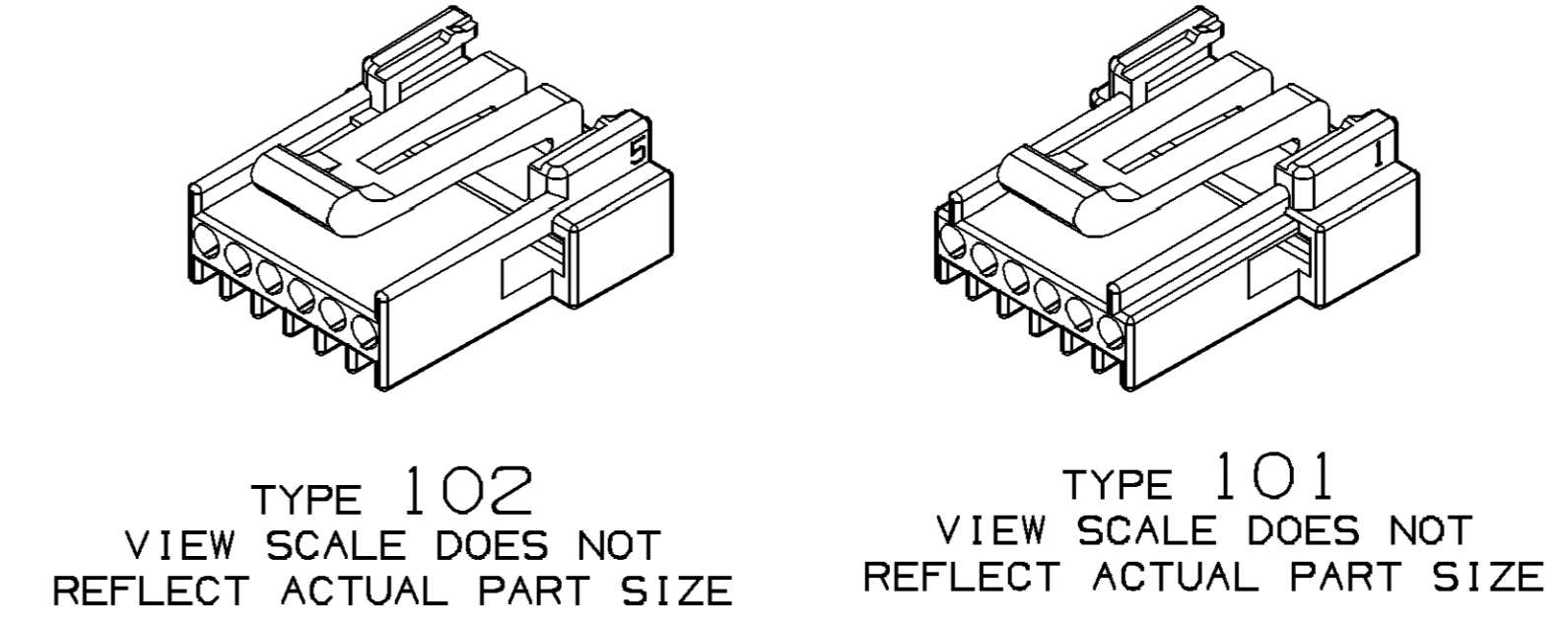
MISSING SYMBOLS		DWG STATUS		REVISION HISTORY		AUTH	DR	APVD
DATE	STG	REV	N/P	CHG	ZONE			
05AU02	R	01	-	-	-	WAS PE104770 & RELEASED	226804	EES/EES
18N002	R	02	-	-	-	ALL PARTS - REVISED GRAPHICS	232845	BLG/JOS
04FE03	R	03	-	-	-	ALL PARTS - REVISED GRAPHICS	236274	MFF/FKV
13M003	R	04	-	-	-	ALL PARTS - REVISED GRAPHICS	238231	ECB/AUG
11AP03	R	05	-	-	-	ALL PARTS - UPDATED PDM ATTRIBUTES	239216	TLD/TLD
29AP03	R	06	-	-	-	ALL PARTS - PROCESS SENSITIVE DIMENSION WAS 9	240001	TLD/TLD
03N003	R	07	-	-	-	ALL PARTS - ADDED MATING CONN TO CHART AND REMOVED CPA FROM NOTE #4	248190	TLD/TLD
05JN06	R	08	-	-	-	15438715-16 AND 15438714 TAXI - OBSOLETE AND ADDED NOTE	281285	RMG/FRG



TYPE 101



- NOTES
- UNLESS OTHERWISE SPECIFIED AND/OR INDICATED:
DIMENSIONS ARE TO FACE OF VIEW SHOWN AND AUTOMATICALLY ROUNDED BY COMPUTER FOR INSPECTION (SEE MATH MODEL FOR PRECISE DIMENSIONS). FOR ALL OTHER DIMENSIONS NOT SHOWN BUT REQUIRED FOR TOOL BUILD, SEE MATH MODEL FOR PRECISE TOOL PATH DATA.
 - MATERIAL RECYCLING CODE PER ISO 11469. (1.8)X(10.05) CHARACTERS AS SHOWN TO BE LOCATED ON ANY EXTERIOR SURFACE.
 - REFERENCE MATING COMPONENTS OR EQUIVALENT:
CONNECTOR - SEE CHART
 - THIS PART ACCEPTS THE FOLLOWING COMPONENTS OR EQUIVALENT:
INNER CONNECTOR - SEE CHART
 - SEALING CODE 0 - UNSEALED
 - (1.8)X(10.05) DELPHI CORPORATE BRAND TO BE LOCATED ON ANY EXTERIOR SURFACE, PREFERABLY VISIBLE AT FINAL ASSEMBLY. OPTIONAL CONSTRUCTION FOR EXISTING TOOLING MAY BE "PED".



OBSOLETE
REPLACED BY
SEE CHART

PART NO	REV	N/P	STATUS	MATERIAL SPECIFICATION AND COLOR	TYPE	MATING INNER CONN	VOLUME (CM ³)	MATING CONNECTOR	REPLACED BY
15438716	03	AD	OBSOLETE	M4629002 PBT GF20 BLK	102	15438719	1.939	12065870	15484954
15438715	03	AD	OBSOLETE	M4629003 PBT GF20 GRA	101	15438718	1.929	12059290	15484953

DIMENSIONAL RANGE (MM)		THIRD ANGLE PROJECTION	DO NOT SCALE
FROM	TO		
> 0	> 30		
> 30	> 70		
> 70	> 100		
> 100	> 150		
> 150	> 200		
> 200	> 250		
> 250	> 300		
> 300	> 400		
> 400	> 500		

PART DRAWING	
STYLE	SEE CHART
VOLUME (CM ³)	018TR CODE
	D
UNLESS OTHERWISE SPECIFIED	
THIS DOCUMENT IS IN ACCORDANCE WITH ASME Y14.9M-1994 AS MODIFIED BY THE IN CHARGE, DIMENSIONAL AND TOLERANCE MANUAL (P1). ALL DIMENSIONS UNLESS OTHERWISE SPECIFIED SHALL BE IN MILLIMETERS AND RELATED DATUMS APPLY. FILE # (UNLESS FROM AN IEC) DOES NOT APPLY. THE RELATIONSHIP BETWEEN FEATURES IS ESTABLISHED BY ORIENTATION OR LOCATION TOLERANCES. SURFACE FINISH CALLOUTS MAY BE SHOWN SEPARATELY, REGARDLESS OF DATUM REFERENCE.	
ALL DIMENSIONS ARE IN MILLIMETERS	
REFERENCE	

DELPHI	
DELPHI PACK/ARD ELECTRIC SYSTEMS WVREN, OH	
DR	DATE
APVD1 E. SEIDEL	05AU02
APVD2 E. SEIDEL	05AU02
APVD3 M. DEMONICA	07AU02
APVD4	
APVD5	
SUBSTANCES OF CONCERN AND RECYCLED CONTENT PER DELPHI 10949001	
MATERIAL SEE CHART	
DRAWING NAME	
TAXI CONN F ZRT 064	
DRAWING NUMBER	
15438714	
SIZE	SCALE
A0	5:1
FRM NO	SHEET NO
1	1 OF 1
REV	N/P
08	-