



Part Number : [39014040](#)

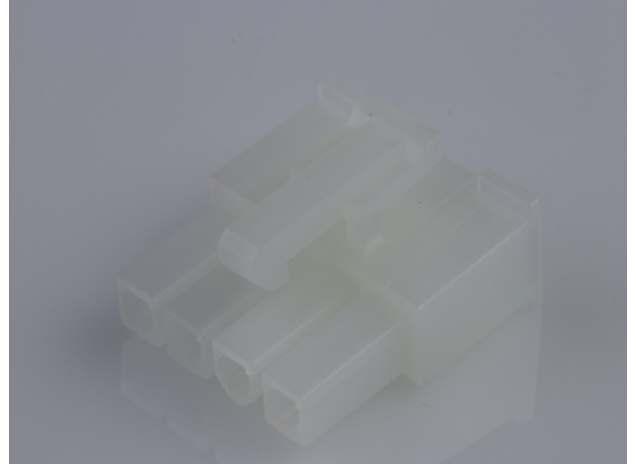
Product Description : Mini-Fit Jr. Receptacle Housing, Single Row, 4 Circuits, UL 94V-2, Natural

Series Number : 5557

Status : Active

Product Category : Connector Housings

Engineering Number : 5557-04R2



Documents & Resources

Drawings

[Drawing 039014040_sd.pdf](#)

[Packaging Design Drawing PK-5557-002-000.pdf](#)

3D Models and Design Files

[3D Model 039014040_stp.zip](#)

Specifications

[Application Specification 55560001-AS-000.pdf](#)

[Application Specification AS-5557-001-001.pdf](#)

[Product Specification PS-45750-001-001.pdf](#)

[Product Specification 55560002-PS-CH-000.pdf](#)

[Product Specification 55560002-PS-ES-000.pdf](#)

[Product Specification 55560002-PS-SK-000.pdf](#)

[Product Specification PS-5556-001-001.pdf](#)

[Product Specification PS-5556-002-001.pdf](#)

[Test Summary 55560010-TS-000.pdf](#)

[Test Summary TS-5556-002-001.pdf](#)

[Test Summary 55570000-TS-000.pdf](#)

Product Environment Compliance

Compliance

| | |
|--------------------|--------------------------------|
| GADSL/IMDS | Not Relevant |
| China RoHS | |
| EU ELV | Not Relevant |
| Low-Halogen Status | Low-Halogen per IEC 61249-2-21 |

| | |
|------------|---|
| REACH SVHC | Not Contained per D(2023)3788-DC (14 Jun 2023) |
| EU RoHS | Compliant per EU 2015/863 |

Multiple Part Product Compliance Statements

- Eu RoHS
- REACH SVHC
- Low-Halogen

Multiple Part Industry Compliance Documents

- IPC 1752A Class C
- IPC 1752A Class D
- Molex Product Compliance Declaration
- IEC-62474
- chemSHERPA (xml)

EU RoHS Certificate of Compliance

Part Details

General

| | |
|----------------|---|
| Status | Active |
| Category | Connector Housings |
| Series | 5557 |
| Description | Mini-Fit Jr. Receptacle Housing, Single Row, 4 Circuits, UL 94V-2, Natural |
| Application | Power, Wire-to-Board, Wire-to-Wire |
| Comments | Current = 13A max. per circuit when header is mated to a receptacle loaded with 45750 series terminals crimped to 16 AWG wire. See Molex product specification PS-45750-001 for additional current derating information. |
| Product Family | Mini-Fit Family Power Connectors |
| Product Name | Mini-Fit Jr. |
| UPC | 800754314961 |

Agency

| | |
|-----|---------|
| CSA | LR19980 |
| UL | E29179 |

Electrical

| | |
|-------------------------------|-------|
| Current - Maximum per Contact | 13.0A |
|-------------------------------|-------|

Physical

| | |
|-------------------------------|----------------|
| Breakaway | No |
| Circuits (maximum) | 4 |
| Color - Resin | Natural |
| Flammability | 94V-2 |
| Gender | Receptacle |
| Glow-Wire Capable | No |
| Keying to Mating Part | None |
| Lock to Mating Part | Yes |
| Material - Resin | Nylon |
| Net Weight | 1.100/g |
| Number of Rows | 1 |
| Packaging Type | Bag |
| Panel Mount | No |
| Pitch - Mating Interface | 4.20mm |
| Pitch - Termination Interface | 4.20mm |
| Polarized to Mating Part | Yes |
| Stackable | No |
| Temperature Range - Operating | -40° to +105°C |

Solder Process Data

| | |
|------------------------------|-----|
| Lead-Free Process Capability | N/A |
|------------------------------|-----|

Mates With / Use With

Mates with Part(s)

| Description | Part Number |
|---|-------------------|
| Mini-Fit Jr. Plug Housing, Single Row, 4 Circuits, UL 94V-2, without Panel Mounting Ears, Natural | <u>0039014046</u> |

| | |
|--|-------------------|
| Mini-Fit Jr. Header, Single Row, Right-Angle, with Snap-in Plastic Peg PCB Lock, 4 Circuits, PA Polyamide Nylon 6/6, 94V-2, Tin (Sn) Plating | <u>0039303045</u> |
| Mini-Fit Jr. Header, Single Row, Right-Angle, with Snap-in Plastic Peg PCB Lock, 4 Circuits, PA Polyamide Nylon 6/6, 94V-2, (Au) Plating | <u>0039303047</u> |

Use with Part(s)

| Description | Part Number |
|---|--|
| Pre-Crimped Lead Mini-Fit Female-to-Mini-Fit Female, Tin (Sn) Plating, 150.00mm Length, 18 AWG, Red | <u>/content/molex/molex-dot-com/us/en/products/product-page.html/797580001.html</u> |
| Pre-Crimped Lead Mini-Fit Female-to-Mini-Fit Female, Tin (Sn) Plating, 300.00mm Length, 18 AWG, Red | <u>/content/molex/molex-dot-com/us/en/products/product-page.html/797580009.html</u> |
| Mini-Fit Female Crimp Terminals | <u>5556</u> |
| Mini-Fit Plus Female Crimp Terminals | <u>45750</u> |
| Mini-Fit Jr. Hermaphroditic Backshells | <u>204723</u> |

This document was generated on Sep 19, 2023