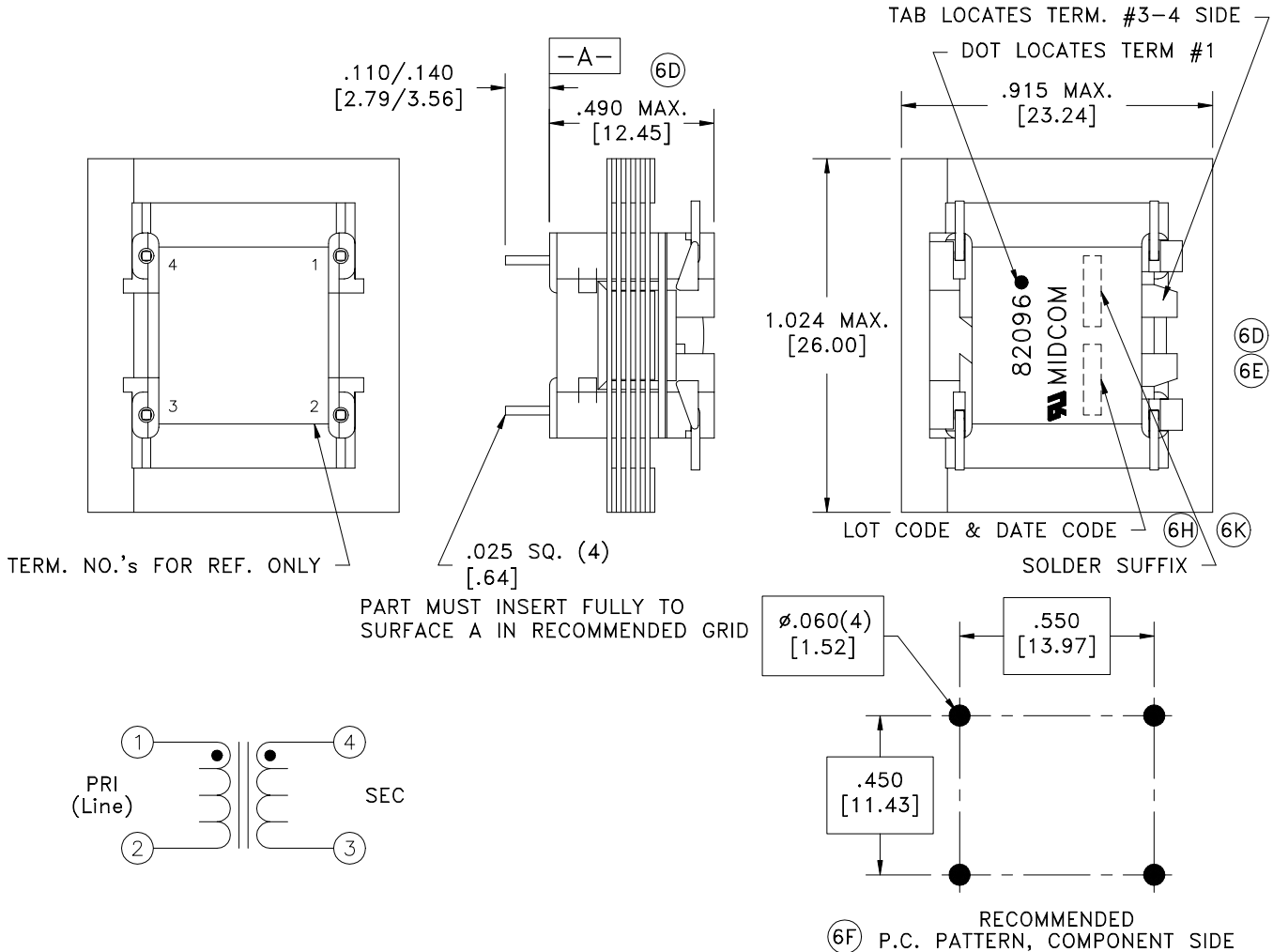


SOLDER SUFFIX	CUSTOMER TERMINAL	RoHS	LEAD(Pb)-FREE	6K
	Sn100%	No	No	
LF3	Sn100%	Yes	Yes	



**ELECTRICAL SPECIFICATIONS @ 25°C unless otherwise noted:**

IMPEDANCE:	Designed to reflect 600 ohm on PRI with 530 ohm load on SEC.
LONGITUDINAL BALANCE:	60dB min., 200 - 1000Hz; 40dB min., 1000 - 4000Hz; per FCC 68.310.
D.C. RESISTANCE, 20°C:	PRI, 48 ohms $\pm 10\%$ . SEC, 48 ohms $\pm 10\%$ .
FREQUENCY RESPONSE:	$\pm 0.20$ dB, 200Hz - 4kHz.
INSERTION LOSS:	1.1dB max., 1000Hz.
DIELECTRIC RATING:	1500VAC, 1 minute tested by applying 1875VAC for 1 second between PRI-SEC.
D.C. CURRENT:	None.
INDUCTANCE:	2.5H min., 200Hz, 1.0V, Lp.
RETURN LOSS:	20dB min., 200 - 4000Hz.
TURNS RATIO:	(4-3):(1-2) = 1:1, $\pm 2\%$ .

6F Designed to comply with the following requirements as defined by IEC950, EN60950, UL60950/CSA60950 and AS/NZS3260:  
 6H - Supplementary insulation for a primary circuit at a working voltage of 250Vrms.

6C 6E	
AGENCY NUMBER	
6H	BABT NC/005588
6F 6H	UL 60950 E205930
6F 6H	CSA 60950 (Via CUL) E205930
	IEC 950 (Via CB cert.) GB485W
	ACA/AUSTEL (Via CB cert.) GB485W
	JAPAN (Via CB cert.) GB485W

**Midcom, Inc.**  
 Watertown, SD USA  
 Toll Free: 800-643-2661  
 Fax: 605-886-4486

Unless otherwise specified:  
 Tolerances: Fractions:  $\pm 1/64$   
 Angles:  $\pm 1^\circ$  Decimals:  $\pm .005$  [.13]

DRAWING TITLE  
**TRANSFORMER**

REVISIONS: SEE SHEET 1

**Midcom**

DRAWING NO. 6K REV. 6K  
**82096/U/-LF3** 3/05

SCALE --- SHEET 2 OF 6

This drawing is dual dimensioned.  
 Dimensions in brackets are in millimeters.

DWG # 82096/U/-LF3