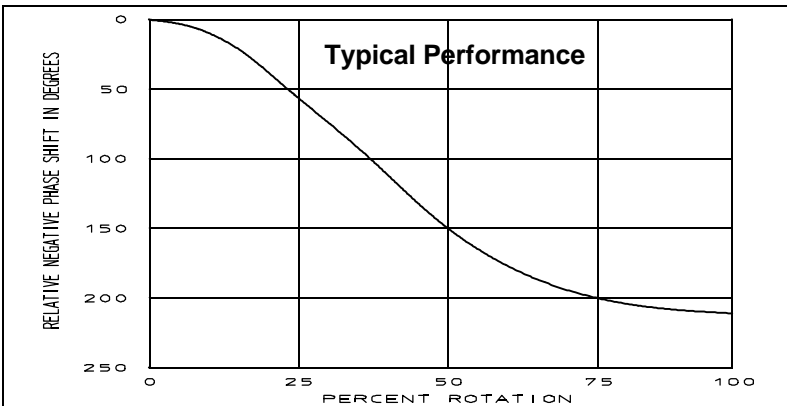


**PRINCIPAL SPECIFICATIONS**

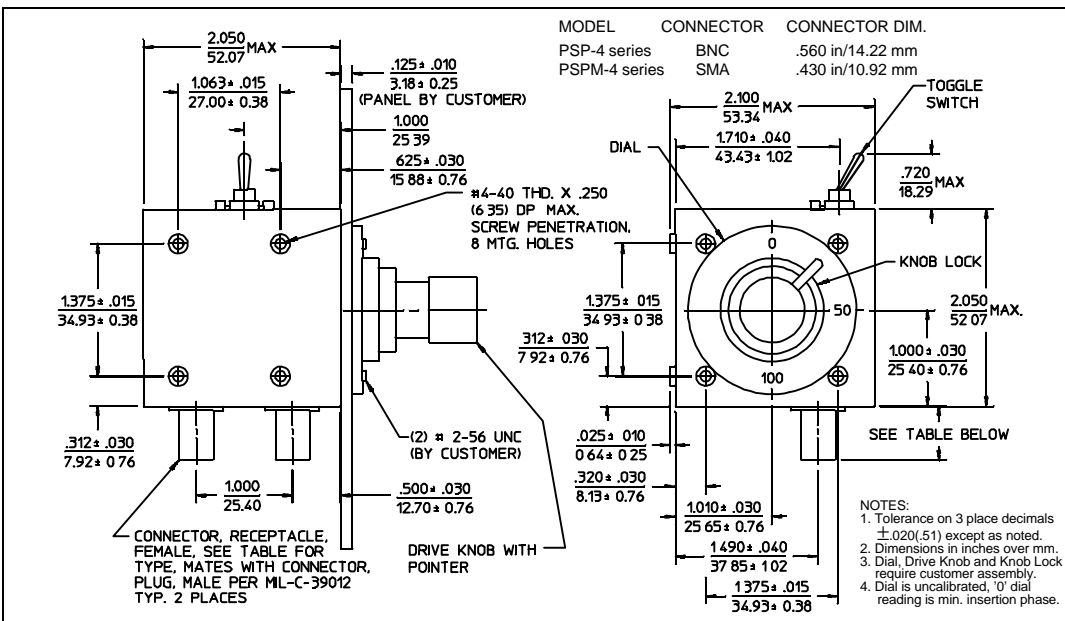
Center Frequency, $f_0$ , MHz	BNC Model Number	SMA Model Number	Usable Bandwidth	Insertion Loss, dB, Max.	VSWR Max. (In/Out)	CW Power, W, Max.
10 to 100	PSP-4-***B	PSPM-4-***B	$f_0 \pm 5\%$	1.75	1.75:1	1
100 to 500				2.25	2.0:1	

For complete Model Number replace \*\*\* with desired Center Frequency,  $f_0$  in MHz.



**GENERAL SPECIFICATIONS**

Phase Shift Range: 0° to 360° @  $f_0$   
 Impedance: 50  $\Omega$  nom.  
 Manual Drive: Knob/Lock for 180° continuous plus 0°/180° Toggle Switch  
 Rotation: Half-Turn nominal for total phase range  
 Direction: Clockwise increases insertion phase  
 Weight, nominal: 6.5 oz (185 g)  
 Operating Temp.: -55° to +85°C



**General Notes:**

- The PSP and PSPM series of panel mountable phase shifters use lumped element quadrature hybrids together with tunable pair of LC networks to generate variable phase shifts up to 180°. An additional 180° of phase shift is available by activating the included switch.
- The continuous phase shift control is provided with a lock to prevent inadvertently changing the setting.
- If continuous 0° to 360° phase shift is required, Merrimac's PS-5 series should be considered.

15Feb96