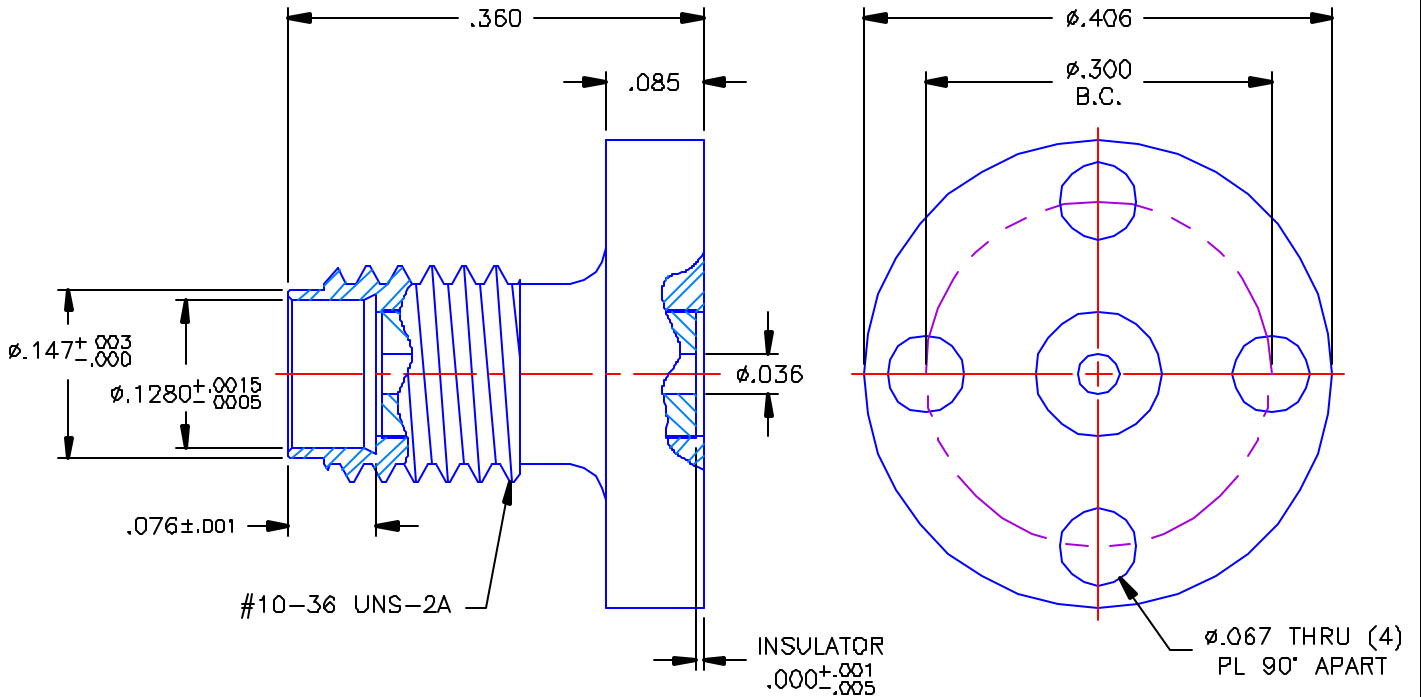


REVISIONS			
REV	DESCRIPTION	DATE	APPROVED
-	INITIAL RELEASE	10/22/03	A.D.M.



PROPRIETARY INFORMATION  
 NOT TO BE RELEASED  
 WITHOUT WRITTEN PERMISSION  
 FROM AN AUTHORIZED  
 REPRESENTATIVE OF  
 APPLIED ENGINEERING PRODUCTS


NOTES:

MATERIALS:

- BODY = STAINLESS STEEL PER ASTM A582, ALLOY 303, CONDITION "A".
- INSULATOR = VIRGIN WHITE TEFLON PER ASTM D1710, GRADE 1, TYPE I, CLASS "B".

FINISH:

- BODY = PASSIVATE PER QQ-P-35, TYPE VI.

UNLESS OTHERWISE SPECIFIED DIMENSIONS ARE IN INCHES TOLERANCES ON	DWN. A.D.M.	DATE 10/22/03	 <b>APPLIED ENGINEERING PRODUCTS</b> 104 John W. Murphy Dr. New Haven, CT 06513
	CHKD: D.N.	DATE 10/22/03	
DECIMAL	ANGLE	APVD: D.J.C.	DATE 10/22/03
REFERENCE: HONEYWELL P/N: 4058166-1 REV B ORIGINATOR: A.D.M. DATE: 10/22/03		MATERIALS & FINISHES:  SEE NOTES	SSMA STRAIGHT JACK SURFACE MOUNT RECEPTACLE  SIZE A FSCM NO 19505 DWG. NO. 9775-9003-001 REV - SCALE 6:1 SHEET 1 OF 1

9775-9003-001