

DUAL POLARISED DUAL-BAND ANTENNA GSM900/1800 XP/85/16 TYPE 1760

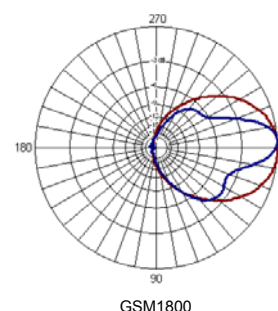
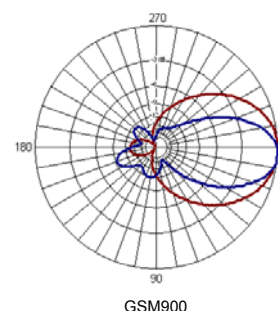
- INBUILT DIPLEXER
- UNIQUE, LOW-PROFILE RADOME

This dual-polarised dual band panel antenna has been designed to provide high gain RF performance. The radome features an attractive, curved profile, reducing visual impact in environmentally sensitive locations.

Both fixed electrical downtilt, and mechanical downtilt utilising the mounting brackets can be employed for optimum cell coverage. Superior circuit design coupled with advanced manufacturing techniques guarantee consistent product quality, with excellent intermodulation performance.

TECHNICAL SPECIFICATION

Frequency	870-960Mhz	1710-1880Mhz
Gain	16dBi	16dBi
VSWR	1.5:1	1.5:1
Horizontal Beamwidth	85°	75°
Vertical Beamwidth	6.5°	5.5°
Fixed Electrical Downtilt	6°	6°
Upper Sidelobe Suppression	<17dB	<14dB
Front-To-Back Ratio	>15dB	>18dB
Isolation Between Ports	>20dB	>20dB
Isolation Between Bands	>25dB	>25dB
Power Rating	250W	250W
Connectors	2 x 7/16 DIN F	-
Dimensions (LxWxD)	2897 x 231 x 113 mm	-
Wind Loading	900N @ 45m/s	-
Operational Wind Speed	45m/s	-
Survival Wind Speed	56m/s	-
Weight	26kg	-
Temperature	-55° to +70°C	-
Bracket Downtilt	0-10°	-



THALES ANTENNAS LTD

First Avenue, Millbrook Trading Estate, Southampton SO15 0LJ United Kingdom

Tel: +44 (0) 2380 705705, Fax: +44 (0) 2380 701122, email: sales@racal-antennas.co.uk, www.thalesantennas.com

Thales reserve the right to vary in detail from the description and specification in this publication. Issue: 6/01/1