

Part/Keyword Search



Detailed Drawing



Printer Friendly Datasheet

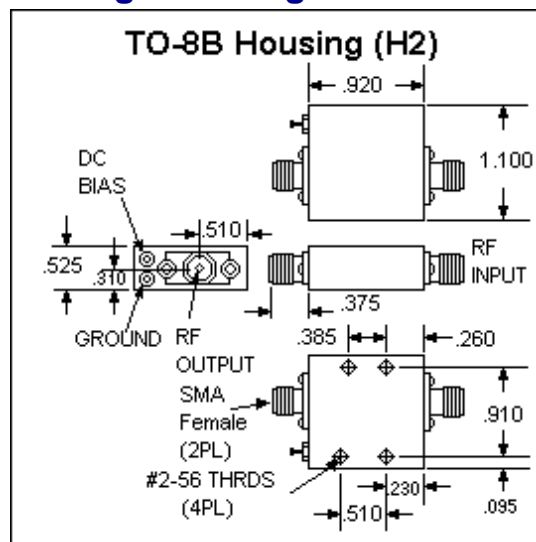
BR6516 / SBR6516*

* Part number for additional environmental screening.

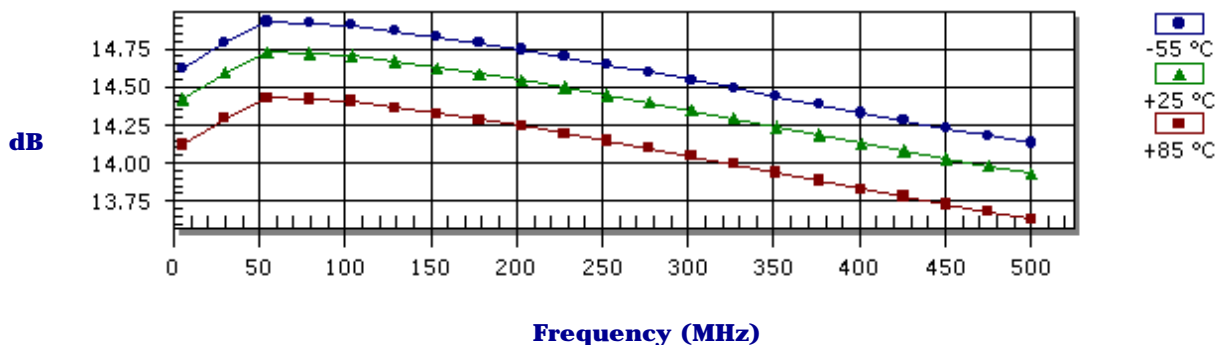
Performance Data

Frequency	5.0 - 500.0 MHz
Gain	14.5 dB Typical 13.5 dB Min
Noise Figure	4.0 dB Typical 4.5 dB Max
P _{1dB}	14.0 dBm Typical 12.0 dBm Min
3 rd Order Intercept	28.0 dBm Typical
2 nd Order Intercept	38.0 dBm Typical
VSWR	1.4/2.0 Input Typ/Max 1.2/2.0 Output Typ/Max
Reverse Isolation	-17.5 dB Typical -17.0 dB Min
Power Supply	15.0 Volts 35.0 mA
Operating Temperature	-55.0 - 85.0 °C

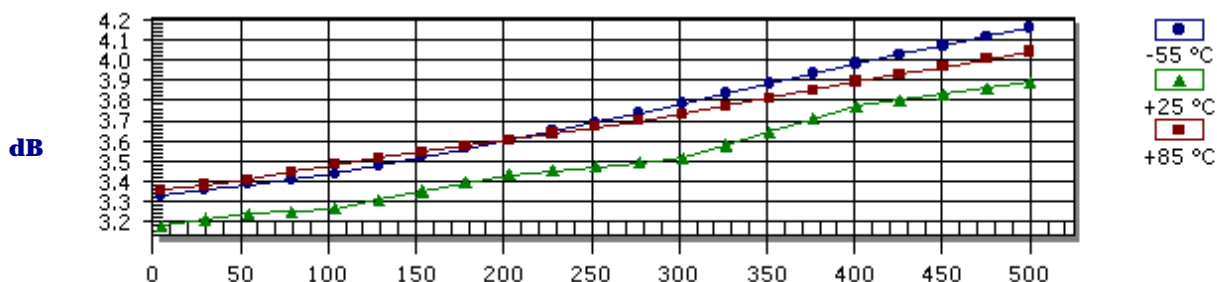
Package Drawing



Gain



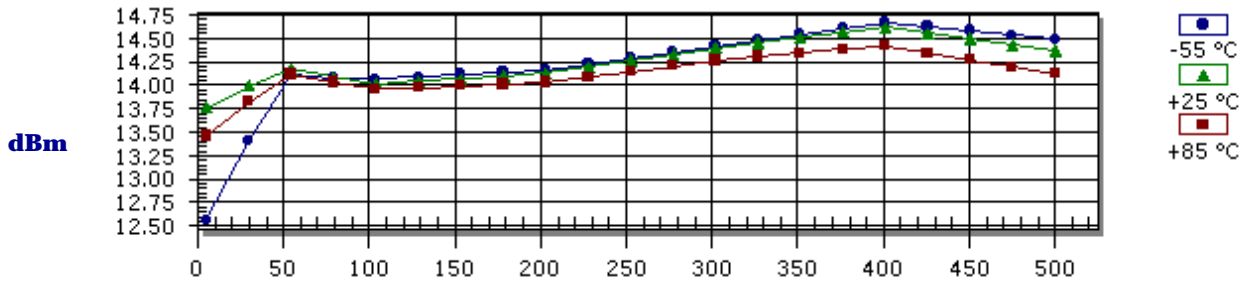
Noise Figure



- Products
- Amplifiers
- VCOs
- Limiting Amplifiers
- Switches
- Linearizers
- Limiters
- Analog Attenuators
- Digital Attenuators
- Detectors

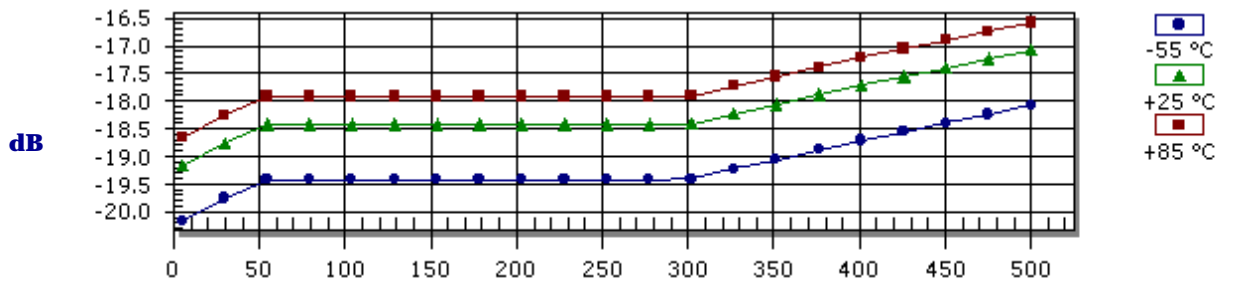
Frequency (MHz)

P_{1dB} Compression Point



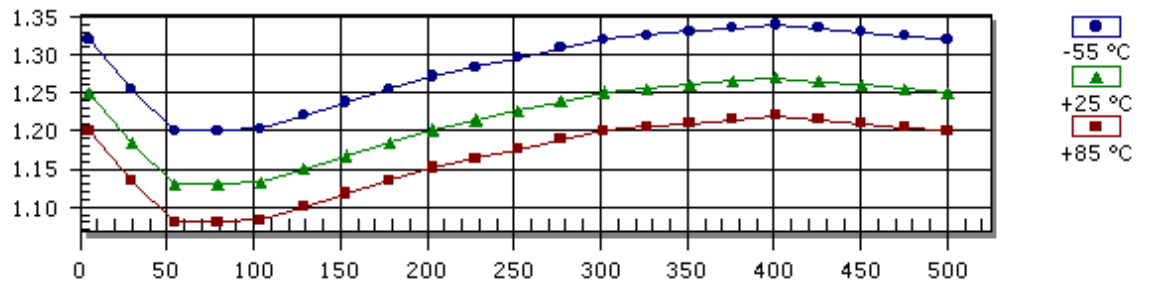
Frequency (MHz)

Reverse Isolation



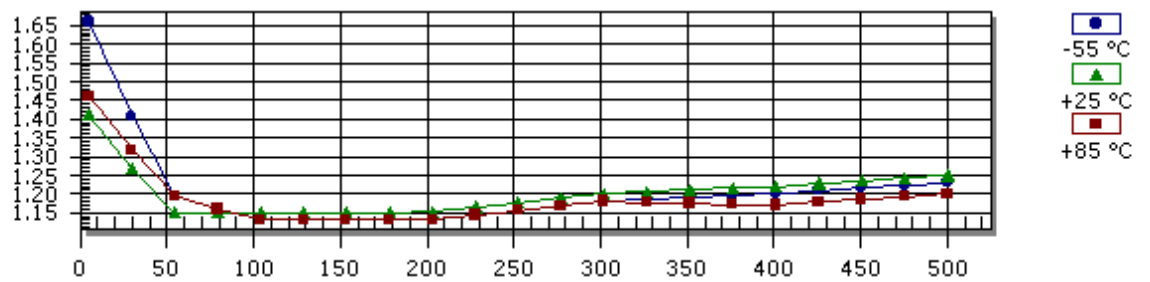
Frequency (MHz)

Input VSWR



Frequency (MHz)

Output VSWR



Frequency (MHz)

S-Parameters

Frequency	S11 Mag	S11 Ang	S21 Mag	S21 Ang	S12 Mag	S12 Ang	S22 Mag	S22 Ang
5.0	0.110	-101.00	5.260	-170.00	0.110	11.00	0.170	137.00
50.0	0.060	168.00	5.450	172.00	0.120	0.00	0.070	167.00
100.0	0.060	135.00	5.440	162.00	0.120	-2.00	0.070	179.00
200.0	0.090	103.00	5.340	144.00	0.120	-5.00	0.070	-175.00
300.0	0.110	84.00	5.220	126.00	0.120	-8.00	0.090	-172.00
400.0	0.120	71.00	5.090	109.00	0.130	-12.00	0.100	178.00
500.0	0.110	65.00	4.970	91.00	0.140	-17.00	0.110	166.00

Absolute Maximum Conditions

Maximum Operating Temperature	-55.0 - 100.0 °C	Maximum Storage Temperature	-62.0 - 125.0 °C
Maximum Case Temperature	125.0 °C	Maximum Supply Voltage	18.0 Volts
Continuous RF Input Power	13.0 dBm	Short Term RF Input Power (1 minute max)	50.0 mW
Maximum Peak Power (3 µsec max)	0.5 W		

Amplifonix | 2707 Black Lake Place | Philadelphia, PA 19154
Tel: 215.464.4000 | FAX: 215.464.4001 | Email: info@amplifonix.com

i2 Technologies US, Inc.

HTML Pages converted to PDF Document

This document contains component information from the manufacturer's website which are not available in a revision controlled document from the manufacturer. To facilitate the addition of these parts into the Electronics Database, we are converting the HTML pages related to that part, from the manufacturer's website into Adobe PDF format. The contents of this document is based on the information provided on the manufacturer's website, therefore the information may have been changed by the manufacturer since this was created.

