

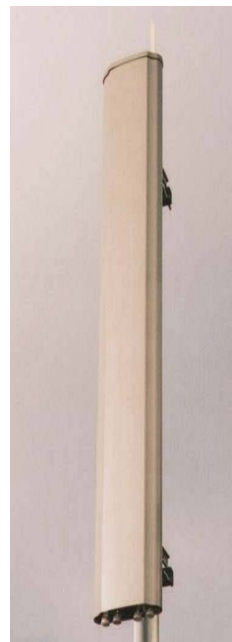


DUAL BAND DUAL-POLARISED TWIN BEAM ANTENNA GSM1800 65°/17.5 DBi UMTS 65°/18.5 DBi TYPE 2283

- GSM1800/UMTS APPLICATIONS
- LOW-PROFILE RADOME
- SIDELOBE SUPPRESSION

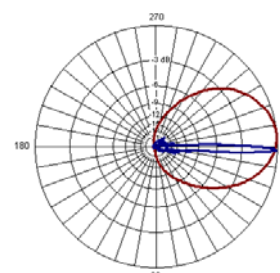
This 'Twin Beam' model has been designed to easily facilitate the addition of UMTS infrastructure to existing GSM1800 networks. It comprises two separate dual-polar antennas side-by-side in a single radome. This configuration reduces visual impact & simplifies installation, providing cost advantages over separate panels.

Model variants are available giving different gain & electrical downtilt to exactly match your site requirements. All models feature an extremely low component count and one-piece PCB. This results in consistently high product quality and reliability, having an excellent intermodulation performance. The mounting brackets enable Tilt or Pan + Tilt options. Two connectors for each band are provided on the base of the unit.

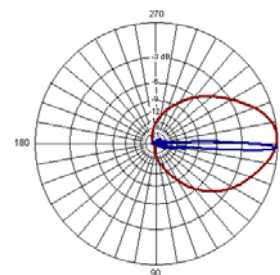


TECHNICAL SPECIFICATION

	GSM1800	UMTS
Frequency	1710 – 1880MHz	1900 - 2170MHz
Gain	17.5dBi	18.5dBi
VSWR	1.4:1 max	1.4:1 max
Horizontal Beamwidth	65°	65°
Vertical Beamwidth	5.8°	5°
Fixed Electrical Downtilt	2°	2°
Upper Sidelobe Suppression	<-18dB	<-18dB
1 st Null Fill Below Horizon	<18 dB below beam peak	<18 dB below beam peak
Isolation	30dB typical	30dB typical
Front-to-Back Ratio	>25dB	>25dB
Power Handling	200W	200W
Connectors (bottom)	2 x 7/16" DIN	2 x 7/16" DIN
Dimensions (LxWxD)	1700 x 275 x 95 mm	-
Operational Wind Speed	45m/s (160Km/h)	-
Survival Wind Speed	56m/s (200Km/h)	-
Max Wind Loading (Front)	481 N @ 45m/s	-
Weight	15kg	-
Temperature Range	-40°C to +70°C	-
Bracket Options	Tilt 8° down 2° up & pan (± 45°)	-



GSM1800 2 DEGREE DOWN TILT



UMTS 2 DEGREE DOWN TILT

THALES ANTENNAS LTD

First Avenue, Millbrook Trading Estate, Southampton SO15 0LJ United Kingdom

Tel: +44 (0) 2380 705705, Fax: +44 (0) 2380 701122, www.thalesantennas.com

Thales reserve the right to vary in detail from the description and specification in this publication. Issue: 6/01/1