

Common Mode Inductors

EE Style

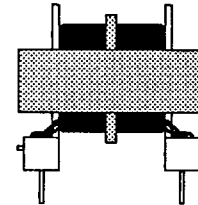
For EE Style Thru-hole Package Dimensions, See fig. 39, fig. 16

"EE" Part Number	L ⁽¹⁾ Min. (mH)	DCR Max. (mΩ)	I ⁽²⁾ Max. (A)	L _L typ. (μH)	Size Code
L-14000	4.40	49	5.50	45	A
L-14001	6.90	77	4.40	70	A
L-14002	10.90	122	3.50	125	A
L-14003	17.80	196	2.70	180	A
L-14004	28.60	316	2.20	300	A
L-14005	43.60	489	1.75	440	A
L-14006	70.30	785	1.38	720	A
L-14007	111.60	1240	1.10	1100	A
L-14008	176.10	1980	0.09	1800	A
L-14009	1.05	50	2.50	9	B
L-14010	2.37	80	2.00	14	B
L-14011	3.80	127	1.60	25	B
L-14012	6.00	202	1.28	36	B
L-14013	9.80	319	1.00	60	B
L-14014	16.00	500	0.80	90	B
L-14015	27.70	820	0.63	144	B
L-14016	40.50	1260	0.50	240	B
L-14017	63.50	2020	0.40	360	B

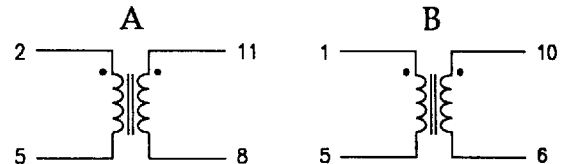
Designed to prevent noise emission in switching power supplies at input.

Windings balanced to 1%

Isolation 2500 V_{RMS}



EE Style Schematics

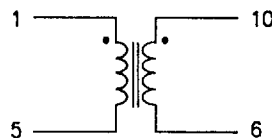


Test Conditions

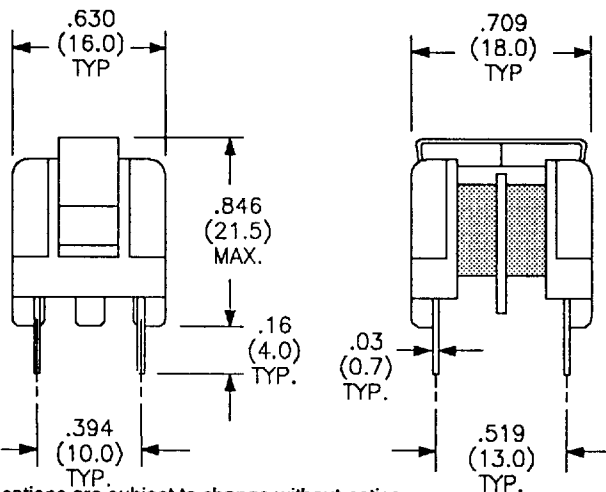
1. Tested at 10 kHz & 100mV
2. 40°C temperature rise

UU Style

UU Style Schematic



"UU" Package Dimensions in inches (mm)



"UU" Part Number	L ⁽¹⁾ Min. (mH)	DCR Max. (Ω)	I ⁽²⁾ Max. (A)
L-14200	10.0	3.00	0.30
L-14201	5.0	2.00	0.30
L-14202	5.0	1.50	0.50
L-14203	4.0	1.00	0.70
L-14204	3.0	0.50	1.00
L-14205	2.0	0.50	1.00
L-14206	1.0	0.40	1.00
L-14207	1.0	0.30	1.30
L-14208	1.0	0.20	1.50
L-14209	0.6	0.15	2.00

Specifications are subject to change without notice.

CMODE-EE 11/95