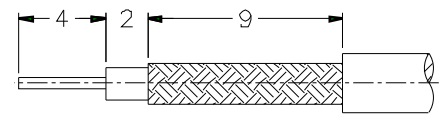
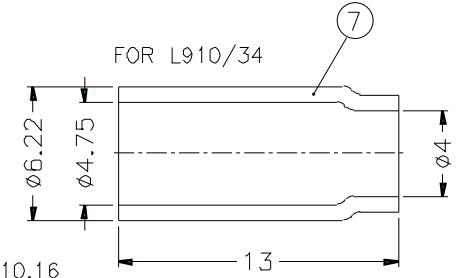
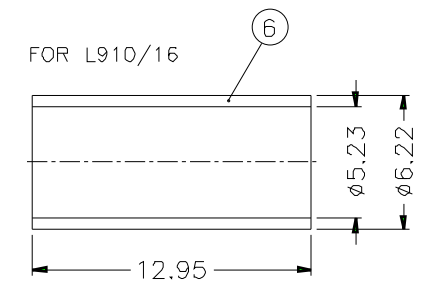
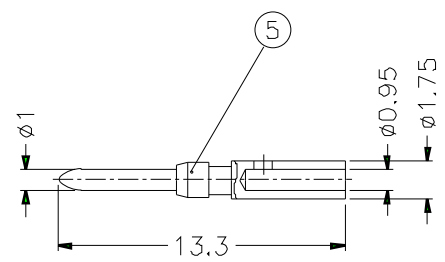
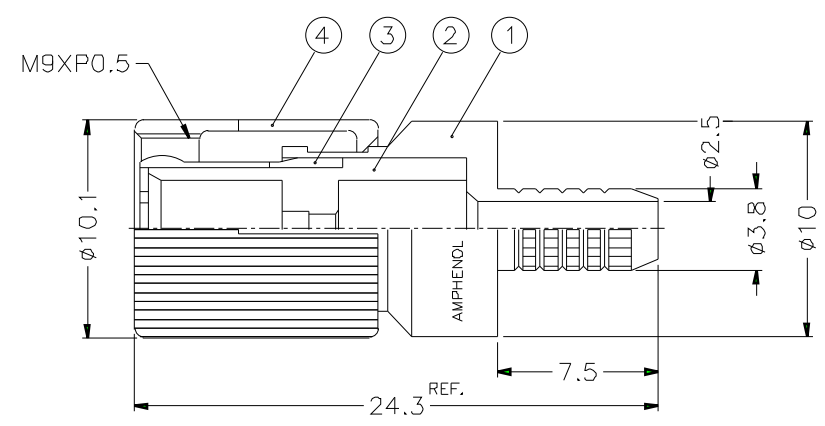


REVISIONS		
ISS	ZONE	DESCRIPTION\PER REQUEST\DATE



RECOMMENDED  
CABLE STRIPPING DIM'S

CABLES: - L910/16  
- L910/34



- FERRULE CRIMPING TOOLS P/N  
227-944 (M22520/5-01)  
227-1221-11 OR 19B (M22520/5-11 OR 19B) HEX: 5.41 L=10.16
- INNER CONTACT CRIMPING TOOL P/N  
413 SP 00 ADJUST TO 5
- STRIPPING TOOL FOR L901/34  
SP 456 00
- CONNECTOR ACCORDING TO NF C 93-570
- PACKAGING IN BAG WITH COMMERCIAL PART NUMBER AND DATE CODE

7	FERRULE	COPPER	NICKEL	1	
6	FERRULE	COPPER	NICKEL	1	
5	CONTACT PIN	BRASS	GOLD	1	
4	SHELL	BRASS	NICKEL	1	
3	OUT CONTACT	BRONZE	GOLD	1	
2	INSULATOR	TEFLON	NATURAL	1	
1	BODY	BRASS	NICKEL	1	
NO.	DESCRIPTION	MATERIAL	FINISH	Q'TY	DRAWING NO.

DIMENSIONS ARE IN MILLIMETERS

PART NO.	156 929 22
APPROVED	DATE 10-11-01'
CHECKED	DATE 10-11-01'
DRAWN	DATE 10-11-01'
FILE NO.	

# Amphenol

TITLE	1.6/5.6 75Ω STRAIGHT PLUG, CRIMP TYPE
DRAWING NO.	
ITEM NO.	

NO.	DESCRIPTION	MATERIAL	FINISH	Q'TY	DRAWING NO.	SCALE	3/1	ISSUE	A	FILE NO.
-----	-------------	----------	--------	------	-------------	-------	-----	-------	---	----------