

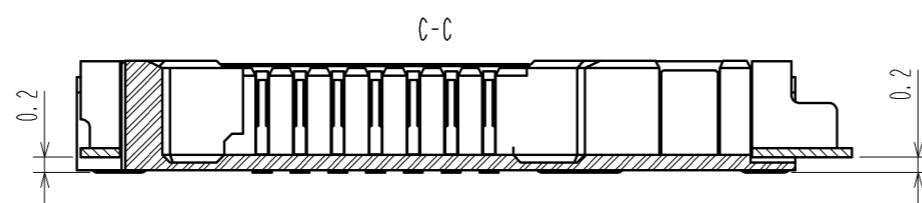
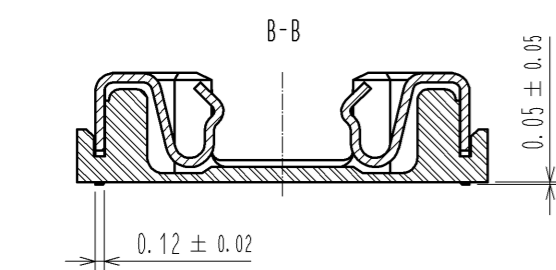
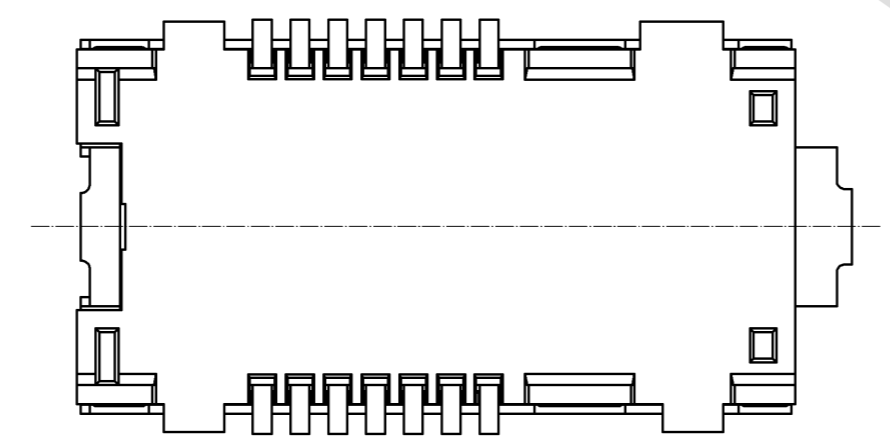
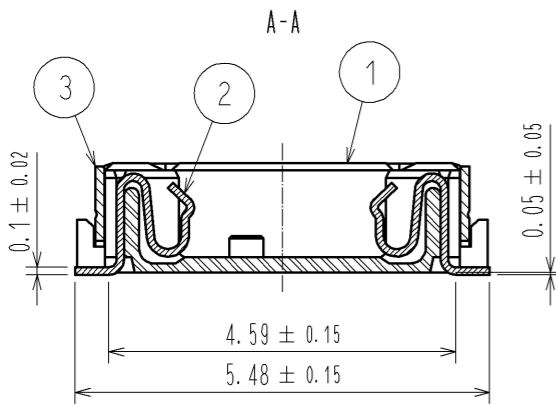
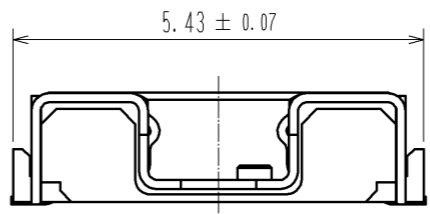
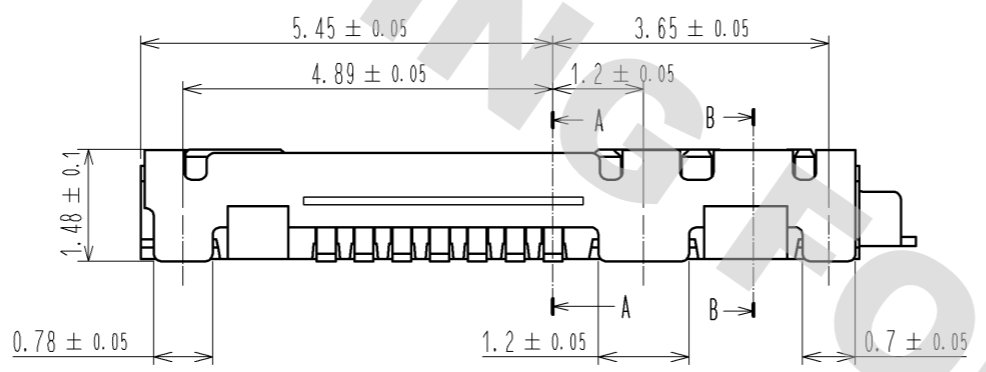
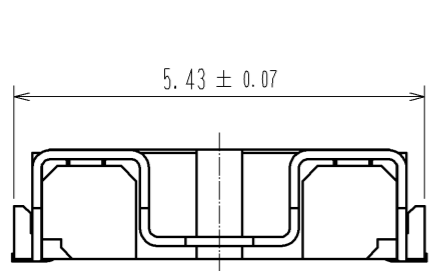
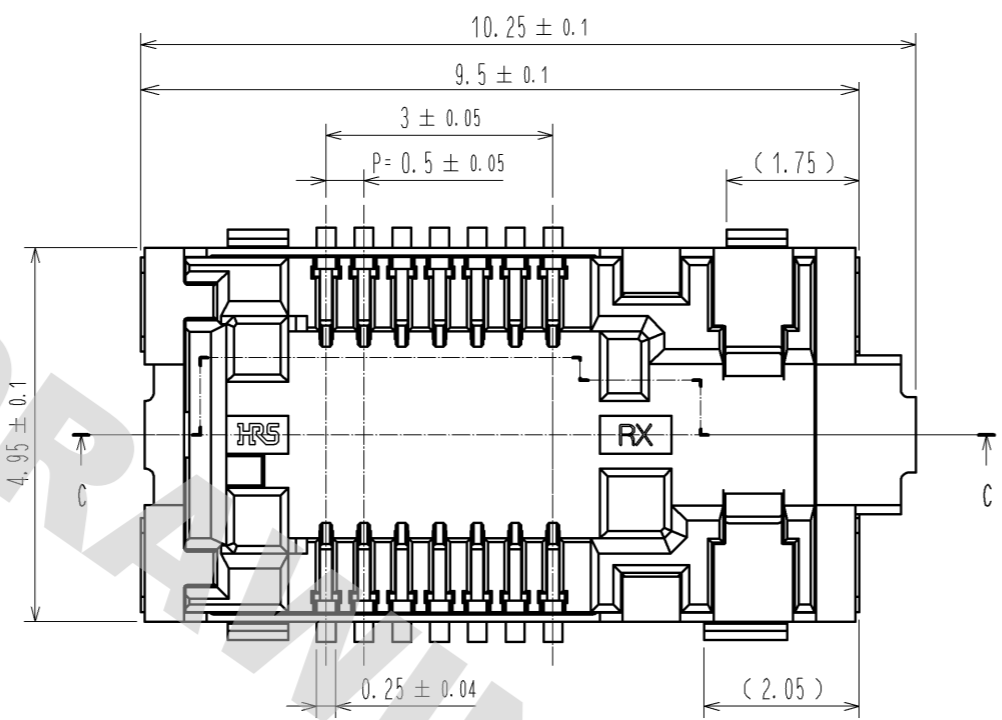
DRAWING FOR REFERENCE: This is subject to change without notice
08/11/2012

HRS

DRAFT

FOR

IN



Quantity	Product name	Product No.
500pcs	BF4A-RX-14DS-0.5V(05)	CL0831-0002-0-05
1000pcs	BF4A-RX-14DS-0.5V(10)	CL0831-0002-0-10
2000pcs	BF4A-RX-14DS-0.5V(20)	CL0831-0002-0-20
3000pcs	BF4A-RX-14DS-0.5V(30)	CL0831-0002-0-30

Detail of parts		
Parts No	Material	Note
①	LCP	UL94 V-0
②	Phosphor Bronze	②
③	Phosphor Bronze	③
④	PS	CLEAR (embossed carrier tape)
⑤	POLYESTER	CLEAR (cover tape)
⑥	PS	Black (plastic reel)

- NOTE 1 All lead co-planarity shall be 0.1mm maximum.
- ② Contact plating
 - Contact area :Gold
 - SMT lead :Gold
 - ③ Shell plating
 - All area :Gold
 - ④ The peeling strength of cover tape shall comply with JIS C0806-3 (IEC 60286-3).
 - ⑤ Embossed carrier tape has the sprocket hole on one side.
 - ⑥ Recommended land pattern is shown. Please do not arrange the via without resist in the hatching part as shown in the figure.
 - ⑦ The connector dimension when the plug engages is shown.
 - ⑧ Please note that it becomes impossible to use standard extraction tool (BF4-T1) when other parts are in the crossing hatching part as shown in the figure.
 - ⑨ Please layout the PCB pattern and fiber alignment, considering not to overload fiber.

UNITS	SCALE	COUNT	DESCRIPTION OF REVISIONS	DESIGNED	CHECKED	DATE
mm	10 : 1	△				
APPROVED : HA. OKANO			10.03.08	DRAWING NO. EDC3-177099-01		
CHECKED : MT. SHIBUTANI			10.03.08	PART NO. BF4A-RX-14DS-0.5V(**)		
DESIGNED : YA. SANO			10.03.05	CODE NO.		
DRAWN : YA. SANO			10.03.05	△ 1/2		

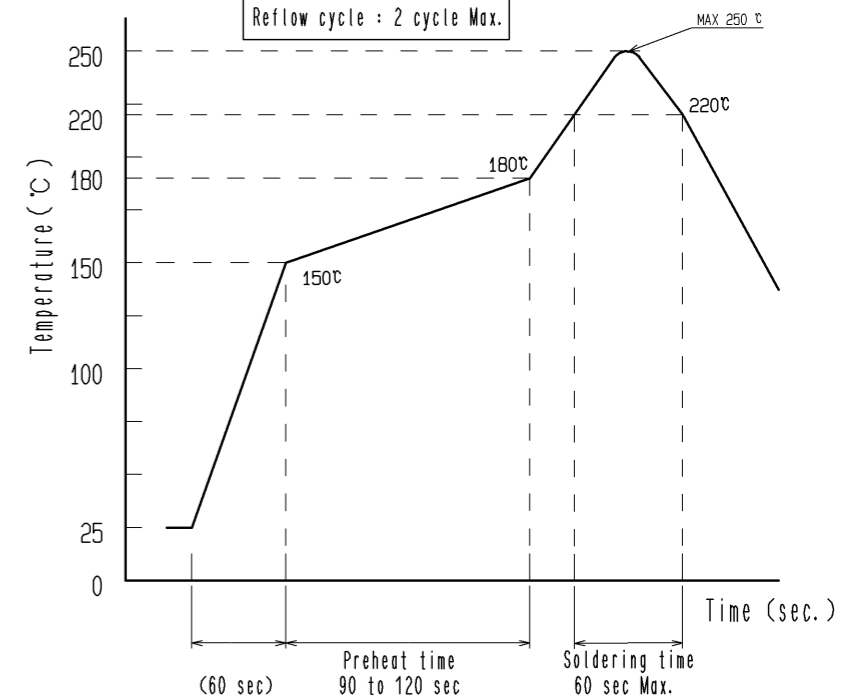
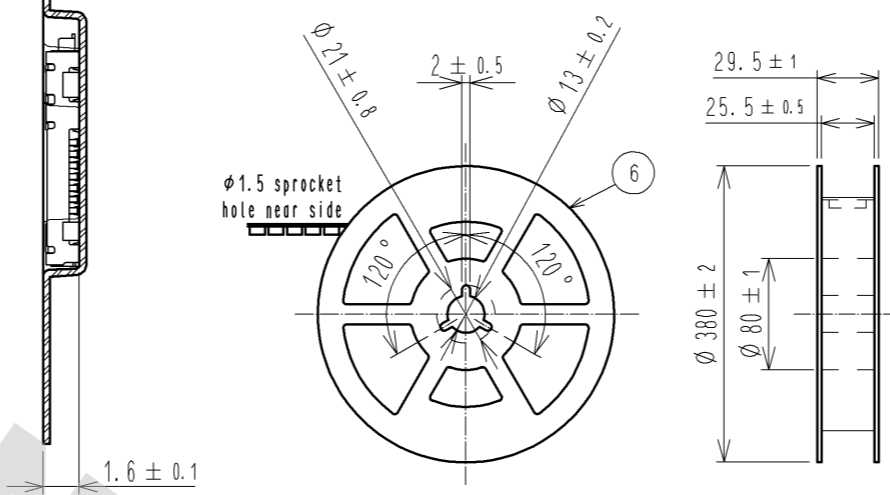
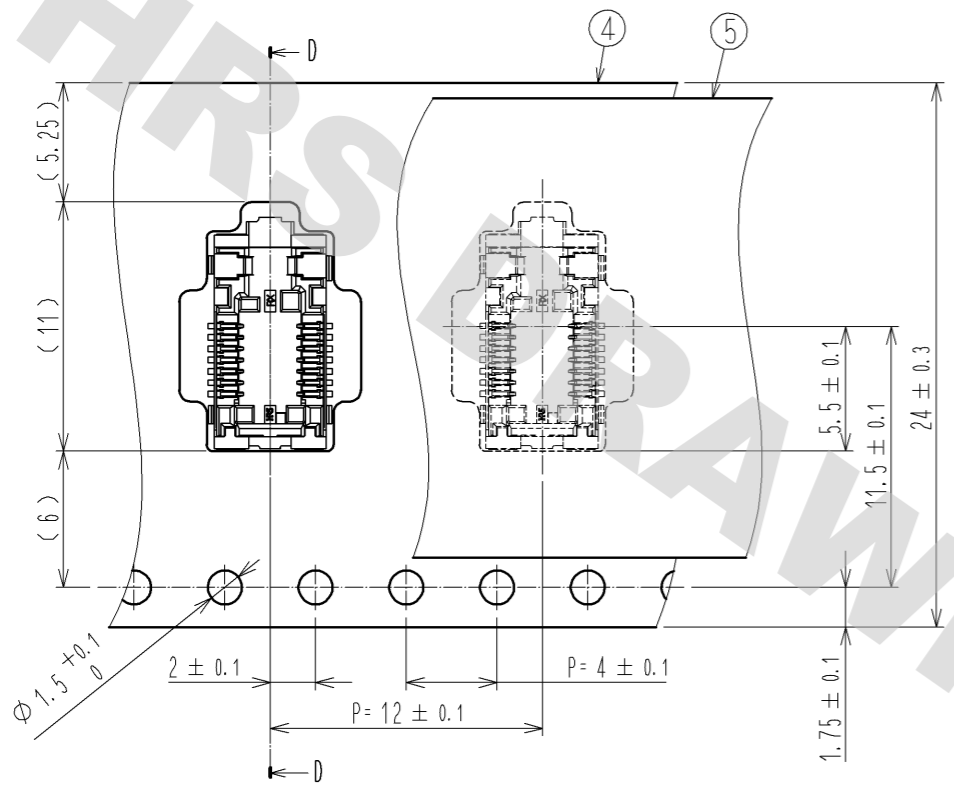
Dimensions of embossed carrier tape (Scale : FREE)

D-D

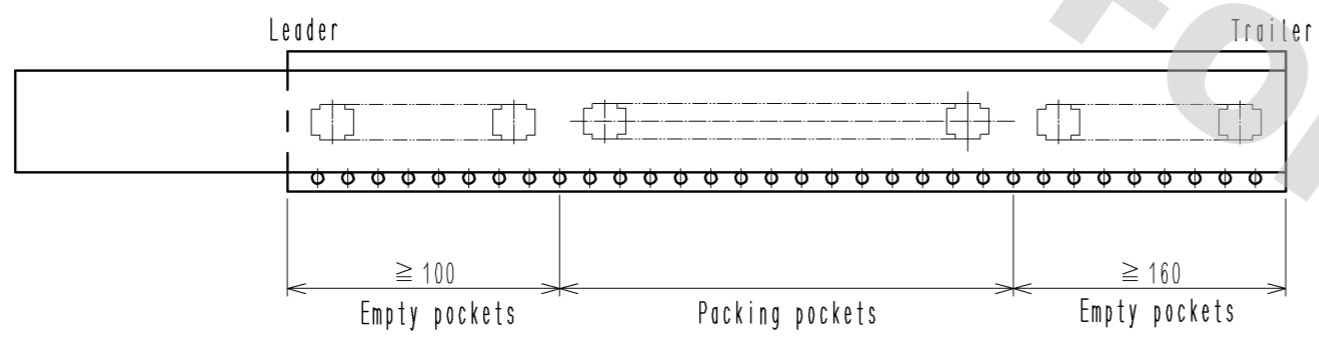
t = 0.3 ± 0.05

Packing reel (Scale : FREE)

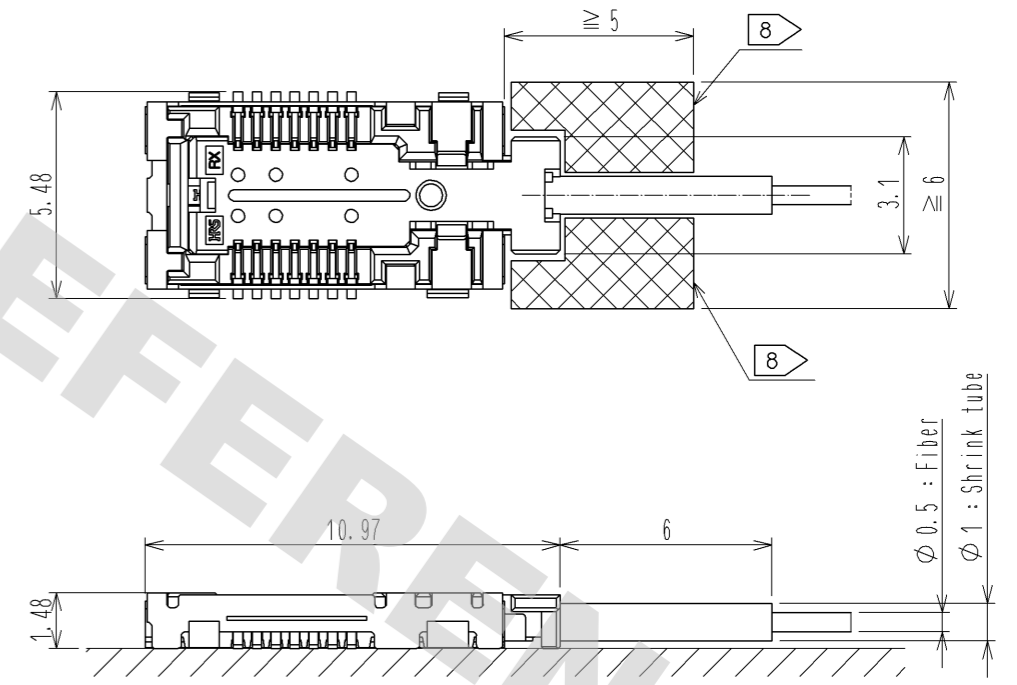
Recommended reflow temperature profile using Lead-Free solder paste.



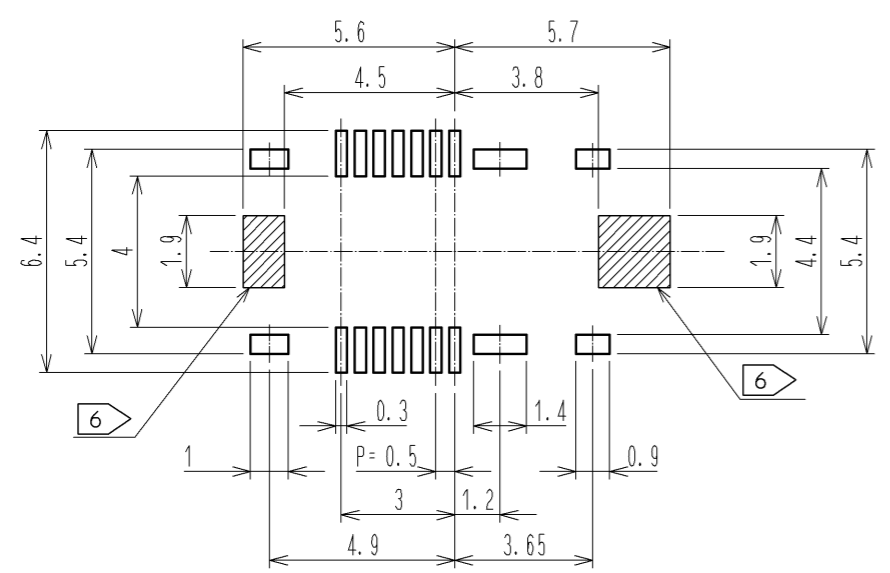
Taping direction



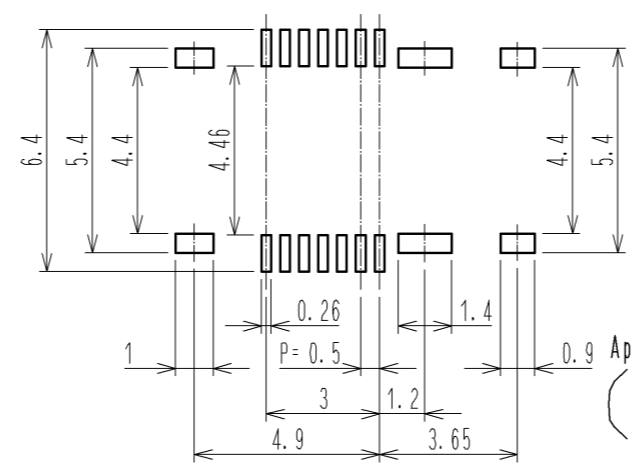
7 Dimensions of engaged connector (5:1)



6 Recommended PCB land pattern (10:1)



Recommended metal mask dimensions (Mask thickness : 120µm)



Aperture ratio
 (Pads mounted contacts : 70%
 (Pads mounted shell : 100%)

HRS	DRAWING NO.	EDC3-177099-01
	PART NO.	BF4A-RX-14DS-0.5V(**)
	CODE NO.	
		2/2

DRAWING FOR REFERENCE: This is subject to change without notice 08/11/2012