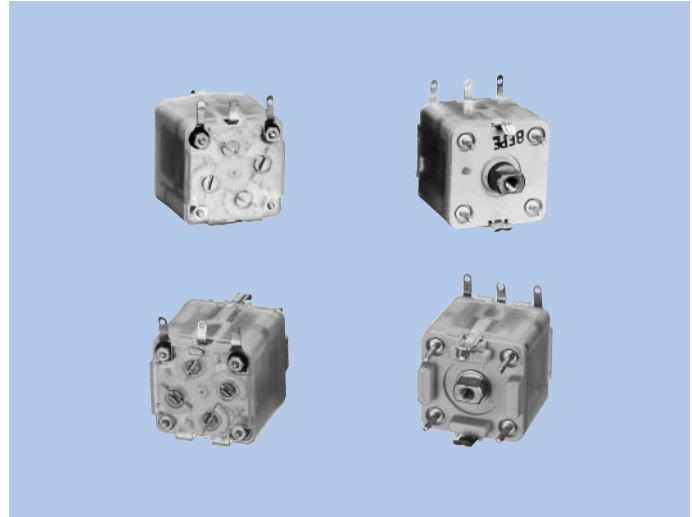


AM 2-Gang, For Multi-Band 20 mm, PVC-2KT-L, -2KT-LD1

FEATURES

These are POLYVARICONS for AM 2-gang multi-band use. Adoption of the self-supporting pin type construction of superb insertability and mountability greatly enhances streamlining of the set manufacturing process. Improvement in anti-howling is promised through special holding construction for laminated stator.



SPECIFICATIONS

Models	Uses	Mounting Form	Dimensions (mm)	Shaft Dimensions (mm)	No. of Stage	max. Capacitance Swing (pF)	min. Capacitance (pF)	Variable Coefficient Curve
2KT-L	AM/FM (Multi-band)	Front mounting	21×21×20.7	6-3	AM-2	335	5±1.5	A
2KT-LD1	AM/FM (Multi-band)	Dip soldering	21×21×23.7	(3.5) -3	AM-2	335	5±1.5	A

CHARACTERISTICS

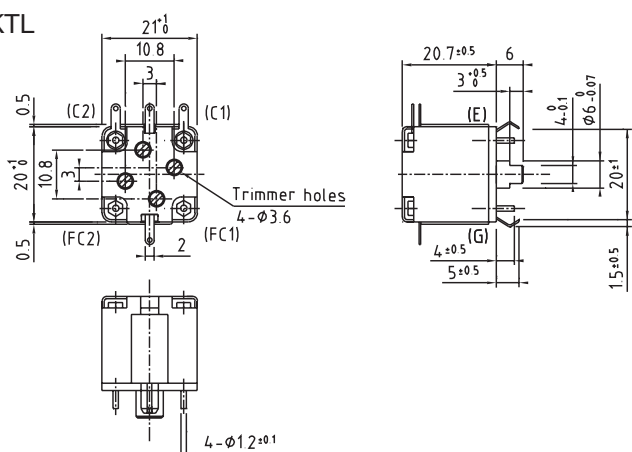
Item		Models	PVC-2KT-L/2KT-LD1
Mechanical Characteristics	Shaft Rotational Direction		Capacitance decreases as shaft turned clockwise.
	Full Rotational Angle		97 ⁺² ₋₁ % (With semi-sphere 180° as 100%.)
	Rotational Torque		70~450g·cm
	Torque Difference		250g·cm or less
	Stopper Strength		12kg·cm (Breakdown strength)
	Trimmer Rotational Torque		50~400g·cm
Electrical Characteristics	Tolerance of Variable Capacitance	AM	± (1pF+1.5%)
	Q	AM	500 or more
	Trimmer Capacitance		7pF or more
	MW Tuning Frequency Range		520~1650kHz

Nominal Variable Coefficient Capacitance

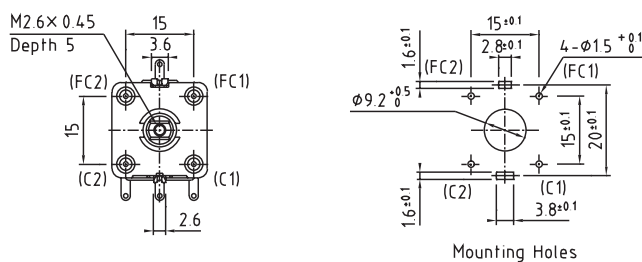
Rotational Index	%	100	90	80	75	70	60	50	40	30	25	20	10	(3)	Variable Coefficient Curve
Variable Capacitance (pF)	AM	335.0	282.7	227.5	201.0	175.2	127.3	87.8	57.0	34.2	25.4	17.8	5.8	0	A

DIMENSIONS

PVC-2KTL

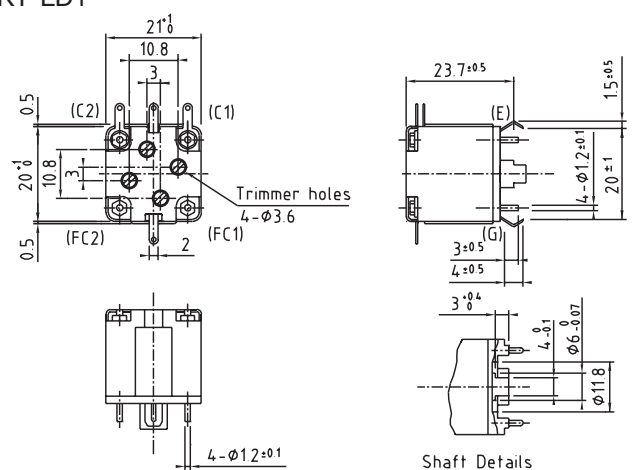


- ☆Flats of shaft located as shown max. capacitance.
- ☆Tolerance of shaft flat angle : Within ±2°.
- ☆Oscillator stage : AM (C1).

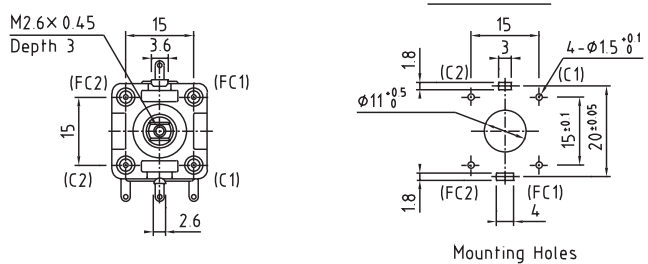


Unit : mm, Tolerance : ±0.2

PVC-2KT-LD1



- ☆Flats of shaft located as shown max. capacitance.
- ☆Tolerance of shaft flat angle : Within ±2°.
- ☆Oscillator stage : AM (C1).



Unit : mm, Tolerance : ±0.2