

T-77-05-07

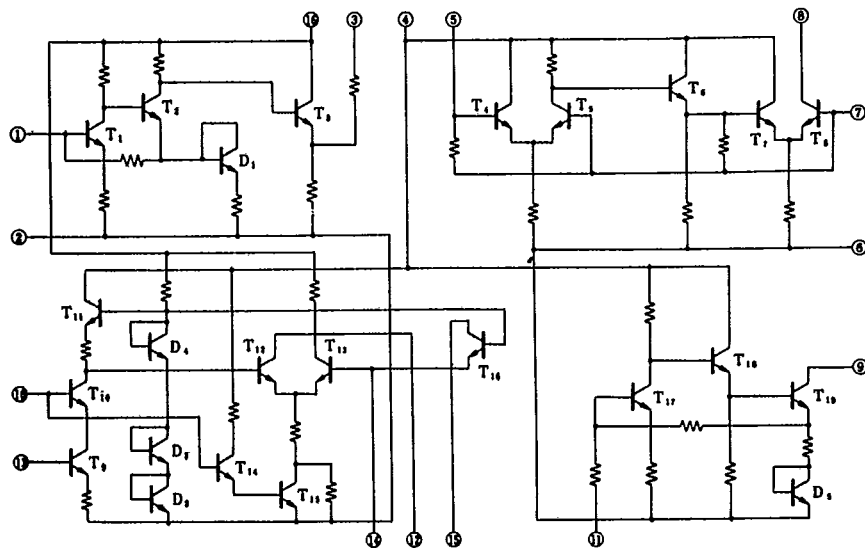
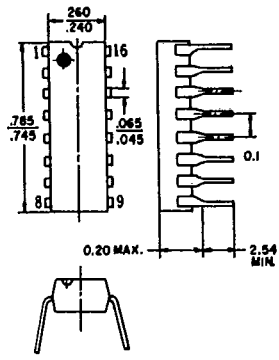


ECG1073

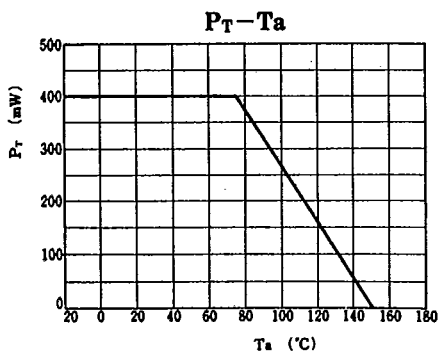
AM-RF AMPLIFIER, MIX. OSC. AND
FM-AM IF AMPLIFIER CIRCUIT

QUICK REFERENCE DATA

	Symbol	Value	Unit
	V_{cc}	8.2	V
FM - IF	$G_V(FM)$	90	dB
AM - IF	$G_V(AM)$	80	dB
AM - Conv.	--	40	dB
FM	$V_O(FM)$	150	mV
AM	$V_O(AM)$	150	mV
AM (S/N = 20 dB)	--	150	$\mu V/m$



T-77-05-07

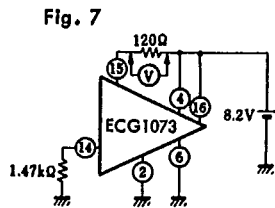
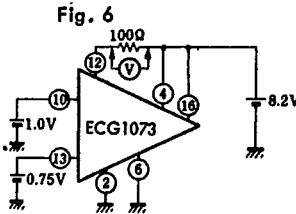
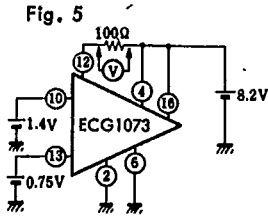
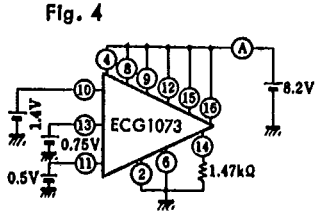
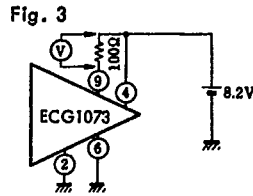
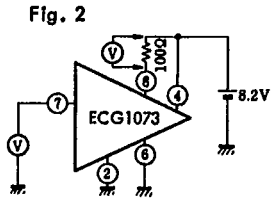
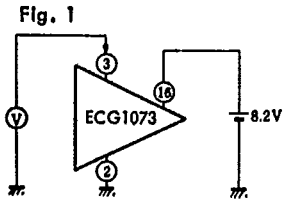


ABSOLUTE MAXIMUM RATINGS (Ta = 25°C)

Symbol	Rating	Unit
V4-6	9.5	V
VCEX	16	V
I _{tot}	40	mA
P _T	400	mW
T _{opr}	-20 ~ +75	°C
T _{stg}	-65 ~ +150	°C

ELECTRICAL CHARACTERISTICS (V_{cc} = 8.2 V, Ta = 25°C)

	Symbol	Test. Flg.	Test Condition	Min.	Typ.	Max.	Unit
	V3-2	1		1	--	6	V
	V4-8	2		50	187	300	mV
	V7-6	2		1	1.82	2.5	V
	V4-9	3		40	219	400	mV
	V4-12	5		--	65	180	mV
	V4-12	6		--	--	30	mV
	V4-15	7		50	140	240	mV
FM - IF	V _{OFM}	8	f = 10.7 MHz, V _{IN} = 200 μV	4.5	--	18	mV
AM - IF	V _{OAM}	8	f = 450 kHz, V _{IN} = 33 μV	8	--	16	mV
	I _{tot}	4		6	25	40	mA



T ₁	450 kHz	> 130	65	②-③ 70 k Ohms
T ₂	450 kHz	140 ^{-10%} _{+20%}	65	②-③ 350 Ohms
T ₃	450 kHz	140 ^{-10%} _{+20%}	65	②-③ 6.5 k Ohms
T ₄	450 kHz	140 ^{-10%} _{+20%}	65	②-③ 1 k Ohm
T _{5, T₆}	10.7 MHz	50 ± 20% 64 ± 20%		33 pF 56 pF
CF1	10.7 MHz	500 Ohms	(-3 dB) 290 ± 40 kHz	9 ± 3 dB

Fig. 8

