

5

4

3

2

1

受控 CONTROLLED DOCUMENT					
编号 P/N	28-5022-CUST	版本 Rev	01	日期 Rel'd Date	SEP 17,09

DRAWING NO.
28-5022

REVISIONS

01	OFFICIAL RELEASE				2009.09.1
	08-05-09	I	W	H	Betty +08'00'

D

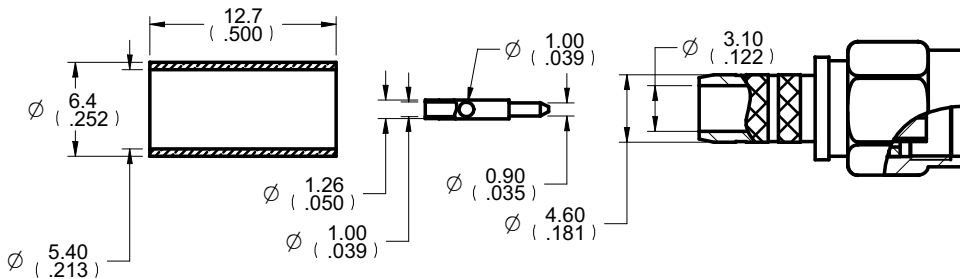


Description: SMA Crimp Plug RG55,142,223,400
 Part No: 28-5022
 Application: RG55,142,223,400
 Crimp Tool: 24-328P
 Impedance: 50Ohm
 Frequency Range: 0-12.4 GHz
 Material: Body Brass Nickel Plated
 Nut Brass Nickel Plated
 Insulator PTFE
 Contact Brass Gold Plated
 Sleeve Brass Nickel Plated

RoHS Compliance: Yes
 Technical Detail: N/A

C

B



DIM OUTLINE

A

CUSTOMER COPY

TOLERANCE UNLESS OTHERWISE SPECIFIED		DRAWN BY IVON.W	DATE 08-05-09
DECIMALS	mm	CHECKED BY IVON.W	DATE 08-05-09
X	± 0.5	APPROVED BY THOMAS	DATE 08-05-09
X.X	± 0.3	U/M	mm
X.XX	± 0.1		
ANGLES	± 0.5°		

EMERSON
Network Power

Connectivity Solutions

TITLE
SMA CRMP PLUG RG55,142,223,400

THIS DRAWING WAS PRODUCED BY COMPUTER,
DO NOT SCALE DRAWING OR UPDATE MANUALLY.

SHEET 1 OF 1	DRAWING NO. 28-5022	SIZE A
-----------------	------------------------	-----------

5

4

3

2

1

D

C

B

A