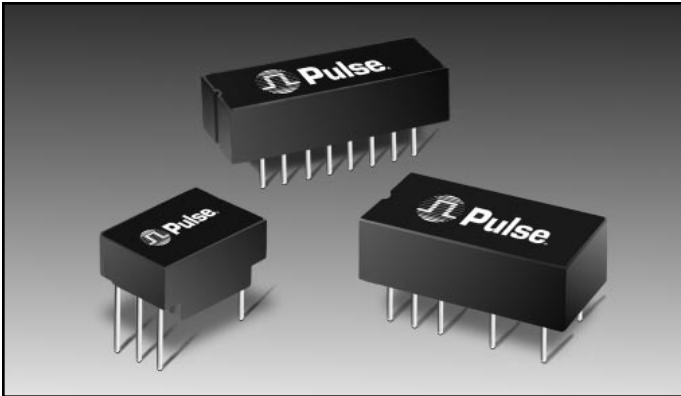




T1/CEPT/ISDN-PRI TRANSFORMERS SINGLE THROUGH HOLE, 1500V_{RMS}

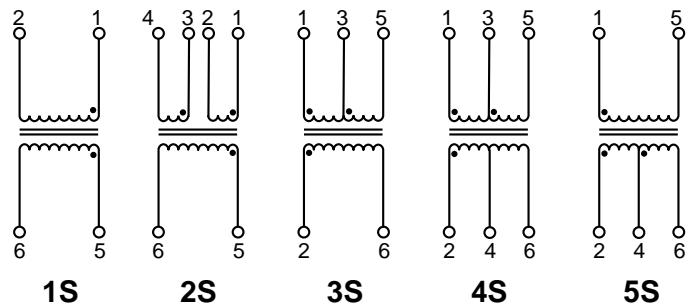
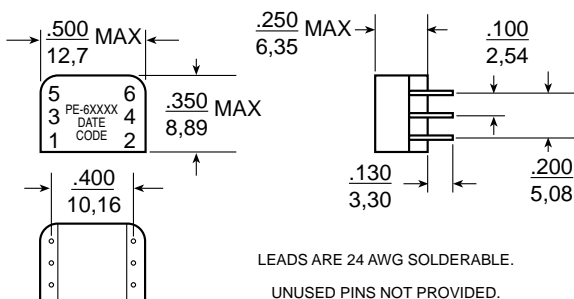


- EXTENDED AND STANDARD TEMPERATURE RANGE MODELS
- DUAL & SINGLE THROUGH HOLE MODELS AVAILABLE
- MODELS MATCHED TO LEADING TRANSCEIVER ICs
- UL 1459 AND BAPT RECOGNIZED MODELS AVAILABLE
- 1500 V_{RMS} ISOLATION VOLTAGE

ELECTRICAL SPECIFICATIONS @ 25°C

Pulse Part Number	Turns Ratio (pri:sec ± 5%)	OCL @ 25°C (mH MIN)	C _{w/w} (pF MAX)	L _L (μH MAX)	DCR Pri (Ω MAX)	DCR Sec (Ω MAX)	Package/ Schematic	Primary Pins
STANDARD TEMPERATURE RANGE SINGLE TRANSFORMERS								
PE-64931	1:1:1 (2CT)	1.20	25	0.50	0.70	0.70 & 0.70	HC-/2S	1-2
PE-64933	1CT:3CT	1.20	30	0.50	0.70	1.60	HC-1/4S	1-5
PE-64934	1:1	1.20	25	0.50	0.70	0.70	HC-1/1S	1-2
PE-64936	1CT:1	1.20	25	0.80	0.70	0.70	HC-1/3S	1-5
PE-64937	1:1.36	1.20	35	0.80	0.70	0.80	HC-1/1S	5-6
PE-64940	1:1:1.58	0.30	30	0.60	0.40 & 0.40	0.60	HC-1/2S	1-4 (2, 3sh.)
PE-64941 ^(D)	1:1:2	0.80	30	0.60	0.40 & 0.40	0.60	HC-1/2S	1-4 (2, 3sh.)
PE-64942	1:1:2.62	0.80	30	0.40	0.40 & 0.40	0.60	HC-1/2S	1-4 (2, 3sh.)
PE-64943	1CT:2CT	1.20	30	0.55 ^(A)	0.70	1.20	HC-1/4S	1-5
PE-65351	1:2CT	1.20	40	0.50	0.70	1.30	HC-1/3S	2-6
PE-65363	1:4CT	0.50	40	1.00	0.50	1.50	HC-1/5S	1-5
PE-65379	1:1.14CT	1.20	35	0.80	0.70	0.80	HC-1/5S	1-5
PE-65388	1:1.15CT	1.50	35	0.60	0.70	0.90	HC-1/3S	2-6
PE-65389 ^(E)	1:1/1.26	1.50	35	0.40	0.70	0.90	HC-1/3S	2-6
PE-65415	1CT:2CT	1.20	30	0.55	0.70	1.20	HC-1/4S	1-5
PE-65558	1:2.3CT	1.20	35	0.80	0.70	1.40	HC-1/5S	1-5
PE-65586	1:1.36CT	1.20	35	0.80	0.70	0.90	HC-1/5S	1-5
PE-65755	1CT:1CT	1.20	25	0.80	0.80	0.80	HC-1/4S	1-5
EXTENDED TEMPERATURE RANGE SINGLE TRANSFORMERS⁽¹⁾								
PE-65340	1:1.36	1.20	35	0.80	0.90	1.20	HC-1/1S	5-6
PE-65770	1:1.15CT	1.50	40	0.80	0.90	1.00	HC-1/3S	2-6
PE-65771	1CT:2CT	1.20	45	0.60	1.00	2.00	HC-1/4S	2-6
PE-65778	1CT:1CT	1.20	40	1.00	1.00	1.00	HC-1/4S	1-5
PE-68664 ^(E)	1:1/1.26	1.50	50	0.80	0.90	1.10	HC-1/3S	2-6
PE-68600	1CT:3CT	1.20	60	0.80	0.90	2.70	HC-1/4S	1-5

HC-1

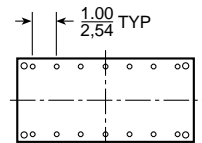
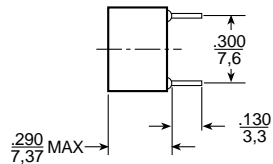
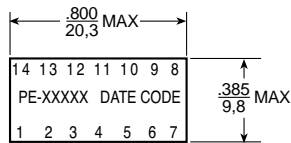


T1/CEPT/ISDN-PRI TRANSFORMERS DUAL THROUGH HOLE, 1500V_{RMS}

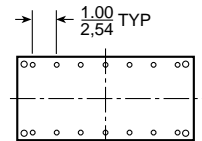
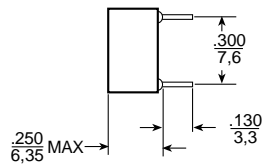
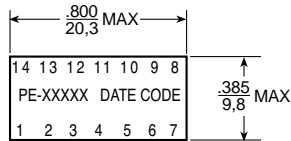
ELECTRICAL SPECIFICATIONS @ 25°C

Pulse Part Number	Turns Ratio (pri:sec ± 5%)	OCL @ 25°C (mH MIN)	C _{w/w} (pF MAX)	L _L (μH MAX)	DCR Pri (Ω MAX)	DCR Sec (Ω MAX)	Package/ Schematic	Primary Pins
STANDARD TEMPERATURE RANGE DUAL TRANSFORMERS								
PE-64951	1:2CT & 1:2CT	1.20 & 1.20	35 & 35	0.50 & 0.50	0.70 & 0.70	1.20 & 1.20	HD-1/1D	14-12, 5-7
PE-64952	1:2CT & 1:1.36	1.20 & 1.20	35 & 35	0.50 & 0.80	0.80 & 0.80	1.20 & 1.00	HD-1/2D	14-12, 5-7
PE-64953	1:2CT & 1:2CT	2.00 & 2.00	50 & 50	0.60 & 0.60	1.00 & 1.00	2.00 & 2.00	HD-1/3D	14-12, 10-8
PE-64954	1CT:2CT & 1:1	1.20 & 1.20	30 & 30	0.55 ^(A) & 0.50	0.70 & 0.70	1.20 & 0.70	HD-1/4D	1-3, 5-7
PE-64955	1.58:2CT & 1.58:1	0.80 & 0.80	30 & 30	0.50 & 0.50	0.60 & 0.60	0.70 & 0.30	HD-1/5D	1-3, 5-7
PE-64956 ^(D)	2:2CT & 2:1	0.80 & 0.80	30 & 30	0.60 & 0.60	0.50 & 0.50	0.50 & 0.20	HD-1/5D	1-3, 5-7
PE-64957	2.62:2CT & 2.62:1	1.20 & 1.20	30 & 30	0.80 & 0.80	0.60 & 0.60	0.50 & 0.30	HD-1/5D	1-3, 5-7
PE-65565	1:1.15CT & 1:2CT	1.50 & 1.20	35 & 40	0.60 & 0.50	0.70 & 0.70	1.10 & 1.10	TD-1/1D	14-12, 5-7
PE-65566 ^(E)	1:1/1.266 & 1:2CT	1.50 & 1.20	40 & 40	0.50 & 0.40	0.70 & 0.70	0.90 & 1.30	TD-1/1D	14-12, 5-7
EXTENDED TEMPERATURE RANGE DUAL TRANSFORMERS⁽¹⁾								
PE-65567	1:1.15CT & 1:2CT	1.50 & 1.20	40 & 60	0.80 & 0.80	0.90 & 0.90	1.10 & 1.70	TD-1/1D	14-12, 5-7
PE-65568 ^(E)	1:1/1.266 & 1:2CT	1.50 & 1.20	50 & 60	0.80 & 0.80	0.90 & 0.90	1.10 & 1.70	TD-1/1D	14-12, 5-7
PE-65774	1CT:2CT & 1:1.36CT	1.20 & 1.20	50 & 50	0.96 & 0.80	1.00 & 1.00	1.70 & 1.20	TD-1/8D	14-12, 5-7
PE-68618 ^(H)	1CT:1CT & 1CT:3CT:25	1.20 & 32.0 ^(H)	40 & 65	0.80 & 0.80	1.00 & 1.20	1.00 & 3.00	BD-1/7D	1-3 4-6
PE-64950 ^(H)	1CT:1CT & 1CT:3CT:1	1.20 & 0.60	40 & 40	0.80 & 0.80	1.00 & 0.80	1.00 & 2.00	BD-1/7D	1-3 4-6

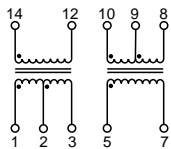
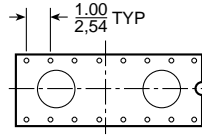
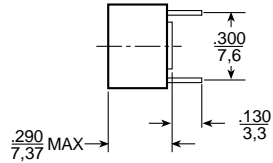
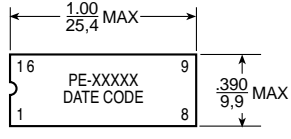
TD-1, DUAL



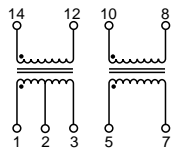
HD-1, DUAL



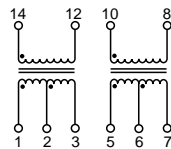
BD-1, DUAL



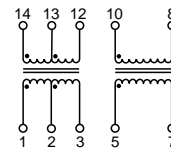
1D



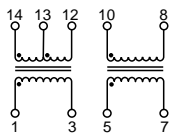
2D



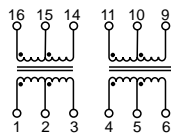
3D



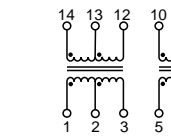
4D



5D



7D



8D

Leads are 24 AWG Solderable.

Dimensions: $\frac{\text{Inches}}{\text{mm}}$

Unless otherwise specified, all tolerances are $\pm \frac{0.010}{0.254}$