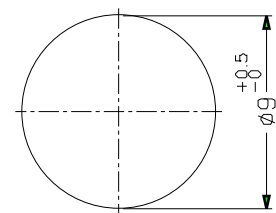
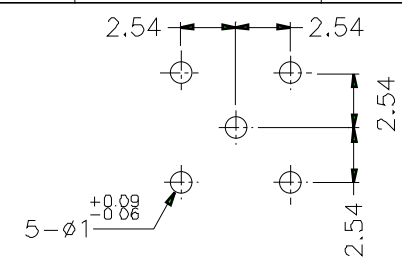


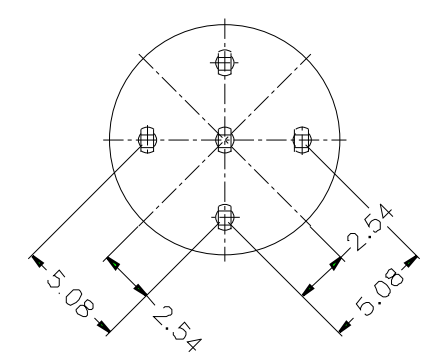
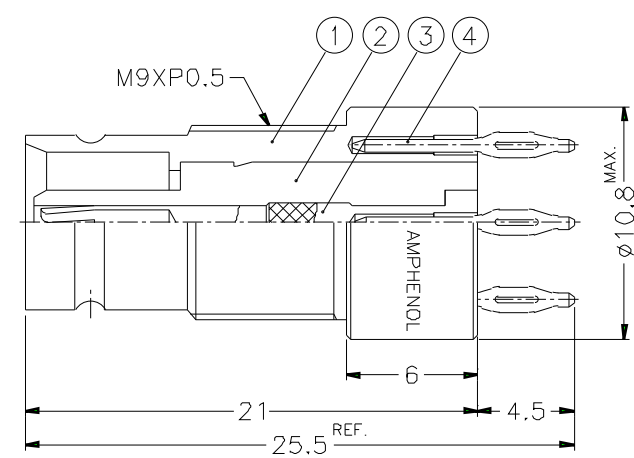
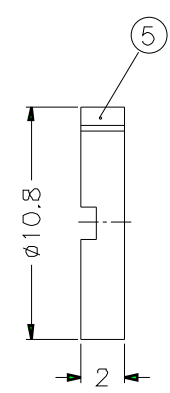
REVISIONS		
ISS	ZONE	DESCRIPTION\PER REQUEST\DATE



RECOMMENDED MOUNTING HOLE



PCB MOUNTING HOLE



PCB THICKNESS: 1.6<sup>MIN</sup>  
 PANEL THICKNESS: 0.6<sup>MIN.</sup> , 3.2<sup>MAX.</sup>

WITHDRAWAL FORCE >150 N  
 INSERTION FORCE <900 N  
 - CONNECTOR ACCORDING TO: CEI 169-13, DIN 47-295, NFC 93-570  
 - PACKING IN TRAY (QTY: 100) WITH COMMERCIAL PART NUMBER AND DATE CODE

DIMENSIONS ARE IN MILLIMETERS										PART NO. 156 770 06		<b>Amphenol</b>	
										APPROVED	DATE		
5	NUT	BRASS	NICKEL	1								10-11-01'	1.6/5.6 75Ω PRESS-FIT P.C.B RECEPT. JACK
4	LEG	P. BRONZE	TIN-LEAD	5								10-11-01'	DRAWING NO.
3	CONTACT PIN	BEUCU	GOLD	1								10-11-01'	ITEM NO.
2	INSULATOR	TEFLON	NATURAL	1								10-11-01'	
1	BODY	BRASS	GOLD	1									
NO.	DESCRIPTION	MATERIAL	FINISH	Q'TY	DRAWING NO.	SCALE	3/1	ISSUE	A	FILE NO.			