

Data sheet Actuator.

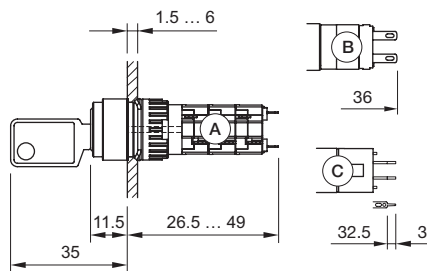
Part No.: 51-141.025D2

Technical data



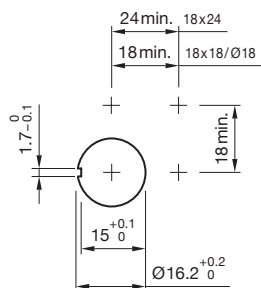
Terminal	Soldering terminal
Weight	0.026 kg
Contact material	Gold
Switching action	Rest (a) - Momentary
Rotary positions	2
Switching system	Snap-action switching element
Switching angle	42° right
Switching rating	250 V @ 5 A
Contacts	1 NC / 1 NO
Hints	
▪ Standard lock: DOM 311	

Dimensions

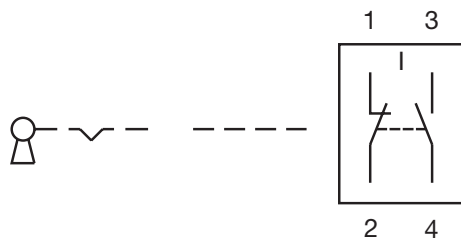


A = Solder terminal
 B = Plug-in terminal 2.8 mm x 0.5 mm
 C = Universal terminal 2.0 mm x 0.5 mm

Mounting cut-outs



Wiring diagrams



Switching positions

