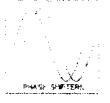
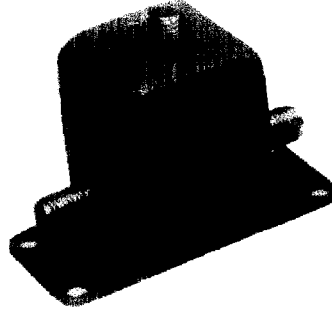


# PSM-2A Series

10 to 500 MHz / 0° to 90° / 10% Bandwidth / Multi-Turn Adjustment, High Resolution Units



## PRINCIPAL SPECIFICATIONS

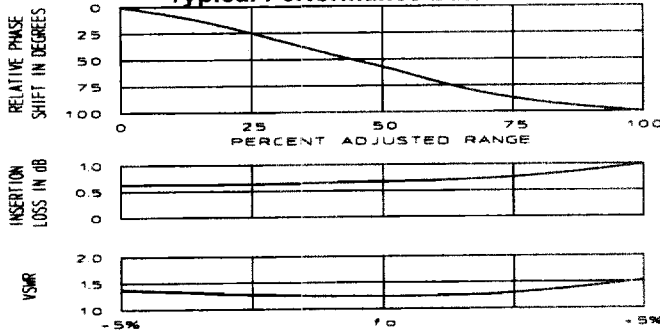
Model Number	Center Frequency, $f_0$ , MHz	Usable Bandwidth, MHz
PSM-2A-60	60	57 - 63
PSM-2A-**B	10 to 500	$f_0 \pm 5\%$

For complete Model Number replace \*\* with desired Center Frequency,  $f_0$  in MHz.

## GENERAL SPECIFICATIONS

Phase Shift Range: 90° min. @  $f_0$   
 Insertion Loss: 1.5 dB max.  
 Impedance: 50  $\Omega$  nom.  
 VSWR: 1.6:1 max.  
 Screw Drive: Multi-Turn  
 Turns for maximum phase shift:  
 10 MHz to 125 MHz: 32 turns nom.  
 125 MHz to 500 MHz: 18 turns nom.  
 CW Power: 0.5 Watts max.  
 Weight, nominal: 2 oz (58 g)  
 Operating Temp: -55° to +85°C

### Typical Performance Data

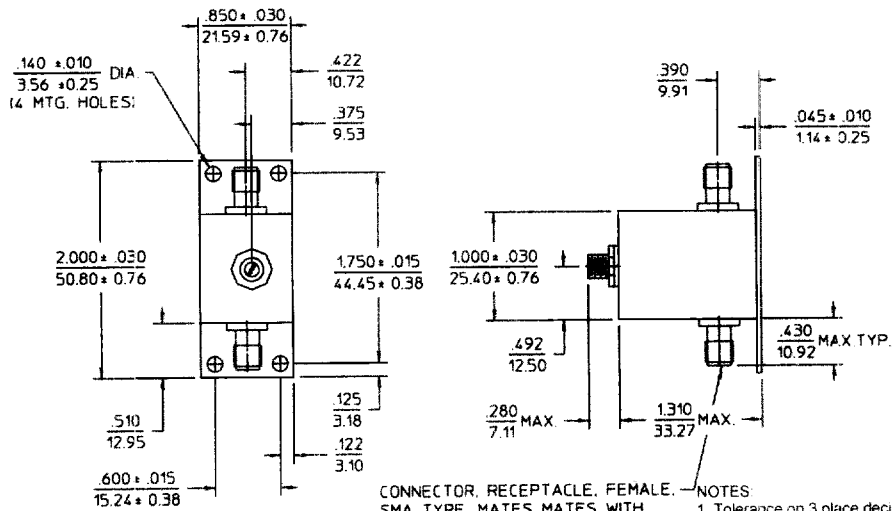


### General Notes:

1. The PSM-2A series provides continuous phase shift in the range of 0° to 90° using a multi-turn adjustment screw.
2. These phase shifters employ lumped element quadrature hybrids with capacitor tuned LC networks acting as sliding short circuits on the outputs. The electrical length of the short effectively delays the reflected signal which appears at the isolated port of the quadrature hybrid.

## Package Outline

22Feb96



CONNECTOR, RECEPTACLE, FEMALE, SMA TYPE, MATES MATES WITH CONNECTOR, PLUG, MALE, PER MIL-C-39012 TYP. 2 PLACES

- NOTES:
1. Tolerance on 3 place decimals  $\pm 0.20(.51)$  except as noted
  2. Insertion phase increases with clockwise rotation of screw.
  3. Dimensions in inches over millimeters