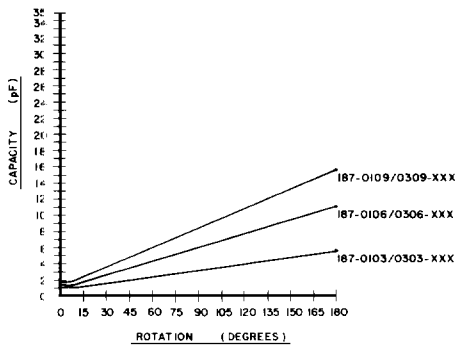
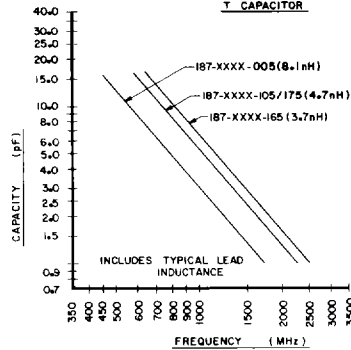


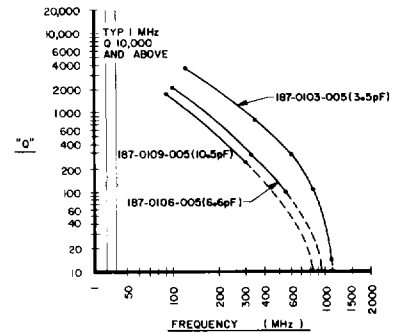
CAPACITY vs. ROTATION T CAPACITOR



CAPACITY VS. SERIES SELF RESONANT FREQUENCY T CAPACITOR



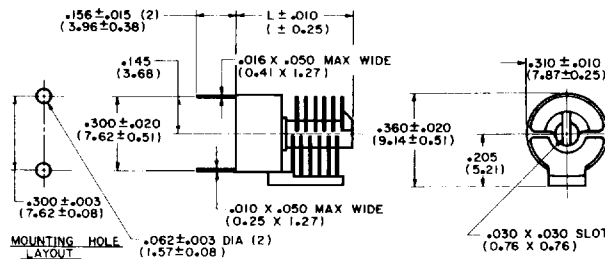
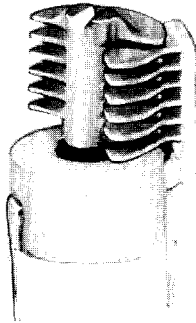
Q VS. FREQUENCY T CAPACITOR



Vertical PC Mount

SPECIFICATIONS

Torque: 1.5-8.0 oz. in. (108-576 gm.cm.)
 Working Voltage: 125 VDC †
 Insulation Resistance: 10⁵ megohm
 Q Factor: 2000 at 1 MHz
 Operating Temperature: -55°C to +125°C
 Temperature Coefficient: +45 ± 45 ppm/°C
 Nominal Air Gap: .008" (0.20mm)



FEATURES:

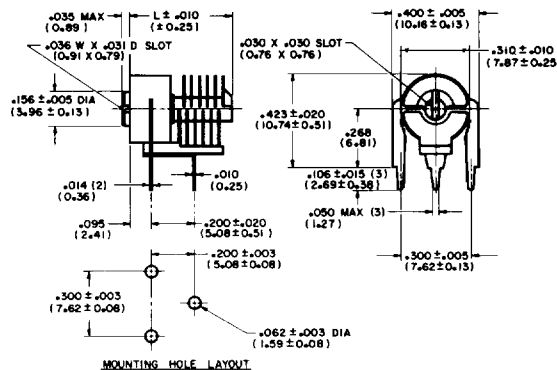
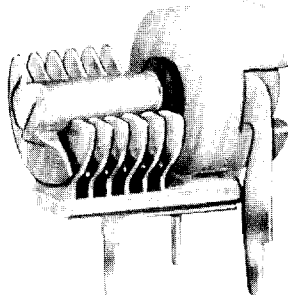
- Low loss ceramic base for stability
- Mounting same as many 10mm ceramic capacitors
- Stator attachment with high temperature solder (232°C)
- Silver plated machined plates

| PART NUMBER | MARKING | NOMINAL CAPACITY (pF) | | GUARANTEED CAPACITY (pF) | | TOTAL PLATES | LENGTH" (mm) |
|--------------|---------|-----------------------|--------------|--------------------------|-----------|--------------|--------------|
| | | MINIMUM +20%/-100% | MAXIMUM ±20% | MAX./MIN. | MIN./MAX. | | |
| 187-0103-005 | T3-5 | 1.3 | 5.4 | 1.56 | 4.86 | 6 | .359(9.12) |
| 187-0106-005 | T6-5 | 1.7 | 11.0 | 2.04 | 9.90 | 12 | .470(11.94) |
| 187-0109-005 | T9-5 | 1.9 | 15.7 | 2.28 | 14.13 | 18 | .581(14.76) |

Horizontal PC Mount

SPECIFICATIONS

Torque: 1.5-8.0 oz. in. (108-576 gm.cm.)
 Working Voltage: 125 VDC †
 Insulation Resistance: 10⁵ megohm
 Q Factor: 2000 at 1 MHz
 Operating Temperature: -55°C to +125°C
 Temperature Coefficient: +45 ± 45 ppm/°C
 Nominal Air Gap: .008" (0.20mm)



FEATURES:

- Low loss ceramic base for stability
- Mounting same as many 10mm ceramic capacitors
- Stator attachment with high temperature solder (232°C)
- Silver plated machined plates

| PART NUMBER | MARKING | NOMINAL CAPACITY (pF) | | GUARANTEED CAPACITY (pF) | | TOTAL PLATES | LENGTH" (mm) |
|--------------|---------|-----------------------|--------------|--------------------------|-----------|--------------|--------------|
| | | MINIMUM +20%/-100% | MAXIMUM ±20% | MAX./MIN. | MIN./MAX. | | |
| 187-0303-105 | T33105 | 1.3 | 5.4 | 1.56 | 4.86 | 6 | .359(9.12) |
| 187-0306-105 | T36105 | 1.7 | 11.0 | 2.04 | 9.90 | 12 | .470(11.94) |
| 187-0309-105 | T39105 | 1.9 | 15.7 | 2.28 | 14.13 | 18 | .581(14.76) |