

DESIGNED & DIMENSIONED
IN MILLIMETERS [INCHES]

DO NOT
SCALE FROM
THIS PRINT

BNC7T-P-C-XX-ST-CA3

GENDER
-P: PLUG

TYPE
-C: CABLE

TERMINATION
-CA3: CABLE
(RG179)

ORIENTATION
-ST: STRAIGHT

PLATING SPECIFICATION

[K] *-MN: MEDIUM GOLD/NICKEL (SEE NOTES 7 & 8)
(SMA-FER-001-N)
(BNC7T-P-C-G-ST-CA3-PIN)
(SUB-BNC7T-P-C-N-ST-CA3)

-GN: GOLD/NICKEL (SEE NOTES 7 & 8)
(SMA-FER-001-N)
(BNC7T-P-C-G-ST-CA3-PIN)
(SUB-BNC7T-P-C-N-ST-CA3)

[K] * = FOR EXISTING CUSTOMERS ONLY

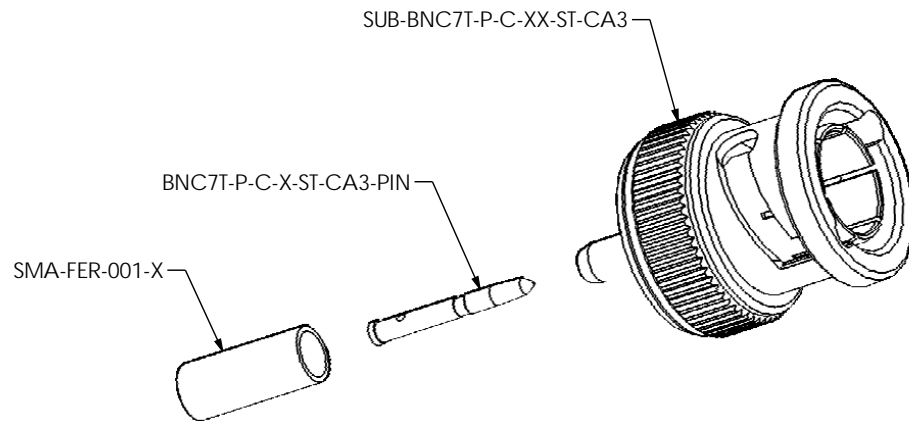
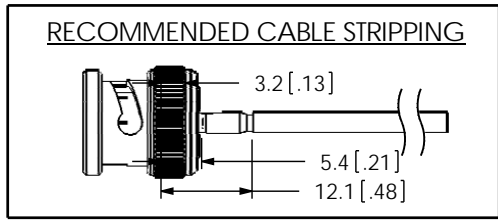


FIG. 1
BNC7T-P-C-XX-ST-CA3 SHOWN

NOTES:

1. $\text{\textcircled{C}}$ REPRESENTS A CRITICAL DIMENSION.
2. CENTER CONTACT PUSHOUT FORCE: 26.69 N [6 LB] MIN.
3. SEE SHEET 3 FOR TERMINATION INFORMATION.
4. NOTE DELETED.
5. PRODUCT TO BE PACKAGED PER PACKAGING STANDARD CO-HD-WI-3040-M
6. RoHS COMPLIANT.
7. PLATING:
 - N: .000100" MIN. NICKEL
 - G: .000010" MIN. GOLD OVER .000050" MIN. NICKEL.
8. ASSEMBLY PLATING DESIGNATIONS:
 - MN, -GN: (CENTER CONTACT)-G:
 - (OUTER CONTACT)-N:
 - (REMAINING METAL PARTS)-N:
9. NOTE DELETED.

**THIS PRODUCT MANUFACTURED
WITH LEAD-FREE PROCESSING**



F:\DWG\MISC\Mktg\BNC7T-P-C-XX-ST-CA3-MKT.SLDDRW

UNLESS OTHERWISE SPECIFIED,
DIMENSIONS ARE IN
MILLIMETERS [INCHES].
TOLERANCES ARE:

DECIMALS	ANGLES
X: ±0.3 [.01]	2°
.XX: ±0.13 [.005]	
.XXX: ±0.051 [.0020]	

PROPRIETARY NOTE
THIS DOCUMENT CONTAINS INFORMATION
CONFIDENTIAL AND PROPRIETARY TO
SAMTEC, INC. AND SHALL NOT BE REPRODUCED
OR TRANSFERRED TO OTHER DOCUMENTS OR
DISCLOSED TO OTHERS OR USED FOR ANY
PURPOSE OTHER THAN THAT WHICH IT WAS
OBTAINED WITHOUT THE EXPRESSED WRITTEN
CONSENT OF SAMTEC, INC.



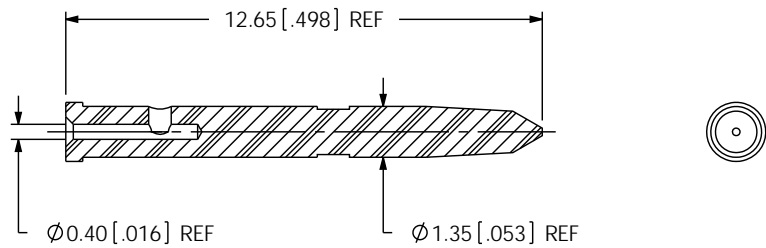
520 PARK EAST BLVD, NEW ALBANY, IN 47150
PHONE: 812-944-6733 FAX: 812-948-5047
e-Mail: info@SAMTEC.com code: 55322

MATERIAL: DO NOT SCALE DRAWING SHEET SCALE: 2:1
SHELL, FERRULE: BRASS
CONTACT: BRASS
GASKET: SILICONE

DESCRIPTION:
TRUE 75 OHM, BNC ST PLUG, RG179

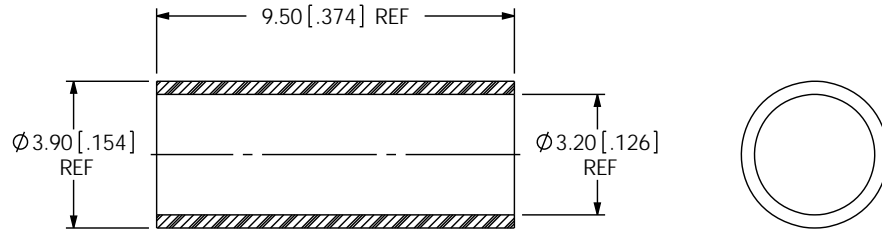
DWG. NO.
BNC7T-P-C-XX-ST-CA3

BY: G.HERMAN 06/19/2008 SHEET 1 OF 3



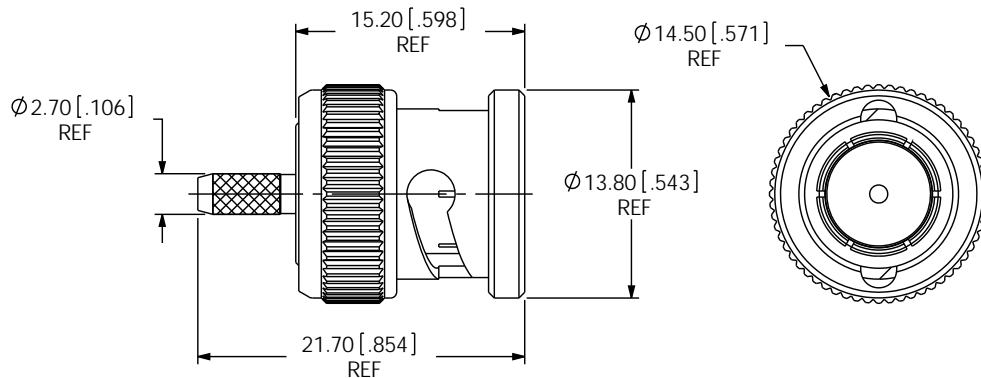
SCALE: 4:1

SAMTEC PART NUMBER	ITEM
BNC7T-P-C-X-ST-CA3-PIN	PIN



SCALE: 4:1

SAMTEC PART NUMBER	ITEM
SMA-FER-001-X	OUTER FERRULE



SAMTEC PART NUMBER	ITEM
SUB-BNC7T-P-C-XX-ST-CA3	SUB ASSEMBLY

F:\DWG\MISC\Mktg\BNC7T-P-C-XX-ST-CA3-MKT.SLDDRW

PROPRIETARY NOTE

THIS DOCUMENT CONTAINS INFORMATION CONFIDENTIAL AND PROPRIETARY TO SAMTEC, INC. AND SHALL NOT BE REPRODUCED OR TRANSFERRED TO OTHER DOCUMENTS OR DISCLOSED TO OTHERS OR USED FOR ANY PURPOSE OTHER THAN THAT WHICH IT WAS OBTAINED WITHOUT THE EXPRESSED WRITTEN CONSENT OF SAMTEC, INC.

DO NOT SCALE DRAWING

SHEET SCALE: 2:1

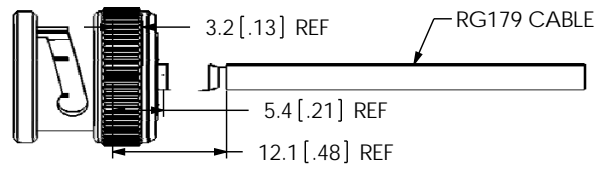


520 PARK EAST BLVD, NEW ALBANY, IN 47150
 PHONE: 812-944-6733 FAX: 812-948-5047
 e-Mail: info@SAMTEC.com code: 55322

DESCRIPTION:
 TRUE 75 OHM, BNC ST PLUG, RG179

DWG. NO.
BNC7T-P-C-XX-ST-CA3

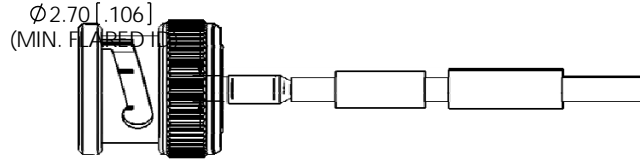
BY: G.HERMAN 06/19/2008 SHEET 2 OF 3



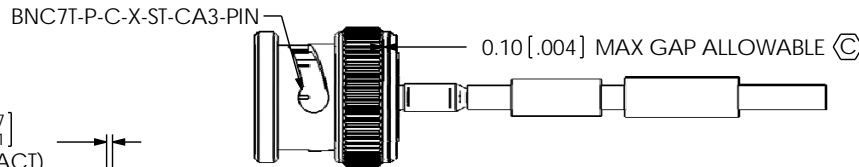
STRIP AND TIN INNER CONDUCTOR



ADD HEAT SHRINK TUBE AND FERRULE

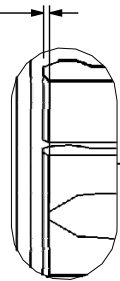


FLARE SHIELD

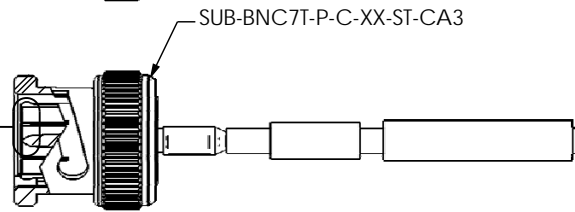


SOLDER SIGNAL PIN

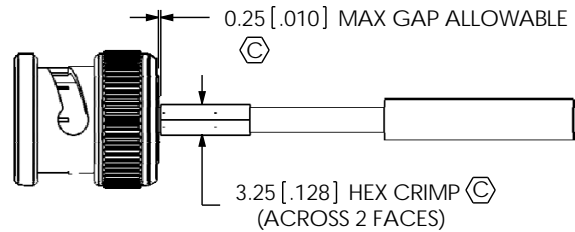
⊕
 $0.16^{+0.17}_{-0.03} [.006^{+.007}_{-.001}]$
 (TO CENTER CONTACT)



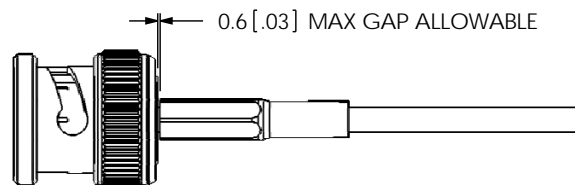
DETAIL 'A'
SCALE 5 : 1



ADD SUB-BNC7T-P-C-XX-ST-CA3



CRIMP FERRULE
 (USE RF CRIMP HAND TOOL #CAT-HT-126667-21 OR EQUIVALENT)



APPLY HEAT SHRINK TUBE

F:\DWG\MISC\Mktg\BNC7T-P-C-XX-ST-CA3-MKT.SLDDRW

PROPRIETARY NOTE

THIS DOCUMENT CONTAINS INFORMATION CONFIDENTIAL AND PROPRIETARY TO SAMTEC, INC. AND SHALL NOT BE REPRODUCED OR TRANSFERRED TO OTHER DOCUMENTS OR DISCLOSED TO OTHERS OR USED FOR ANY PURPOSE OTHER THAN THAT WHICH IT WAS OBTAINED WITHOUT THE EXPRESSED WRITTEN CONSENT OF SAMTEC, INC.

DO NOT SCALE DRAWING

SHEET SCALE: 1.25:1



520 PARK EAST BLVD, NEW ALBANY, IN 47150
 PHONE: 812-944-6733 FAX: 812-948-5047
 e-Mail: info@SAMTEC.com code: 55322

DESCRIPTION:
 TRUE 75 OHM, BNC ST PLUG, RG179

DWG. NO.
BNC7T-P-C-XX-ST-CA3

BY: G.HERMAN 06/19/2008 SHEET 3 OF 3