



T-73-43

SL521A, B & C

140MHz WIDEBAND LOG AMPLIFIER

The SL521A, B and C are bipolar monolithic integrated circuit wideband amplifiers, intended primarily for use in successive detection logarithmic IF strips, operating at centre frequencies between 10MHz and 100MHz. The devices provide amplification, limiting and rectification, are suitable for direct coupling and incorporate supply line decoupling. The mid-band voltage gain of the SL521 is typically 12dB (4 times). The SL521A, B and C differ mainly in the tolerance of voltage gain and upper cut-off frequency.

The device is also available as the SL521AC which has guaranteed operation over the full Military Temperature Range and is screened to MIL-STD-883C Class B. Data is available separately.

FEATURES

- Well-Defined Gain
- 4dB Noise Figure
- High I/P Impedance
- Low O/P Impedance
- 165MHz Bandwidth
- On-Chip Supply Decoupling
- Low External Component Count

APPLICATIONS

- Logarithmic IF Strips with Gains up to 108dB and Linearity better than 1dB

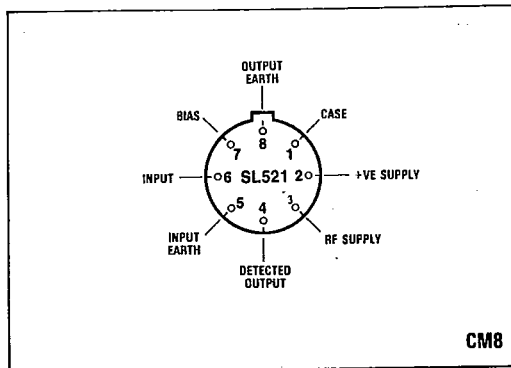


Fig.1 Pin connections - bottom view

ABSOLUTE MAXIMUM RATINGS (Non-simultaneous)

Storage temperature range	-55°C to +175°C
Chip operating temperature	+175°C
Chip-to-ambient thermal resistance	250°C/W
Chip-to-case thermal resistance	80°C/W
Maximum instantaneous voltage at video output	+12V
Supply voltage	+9V

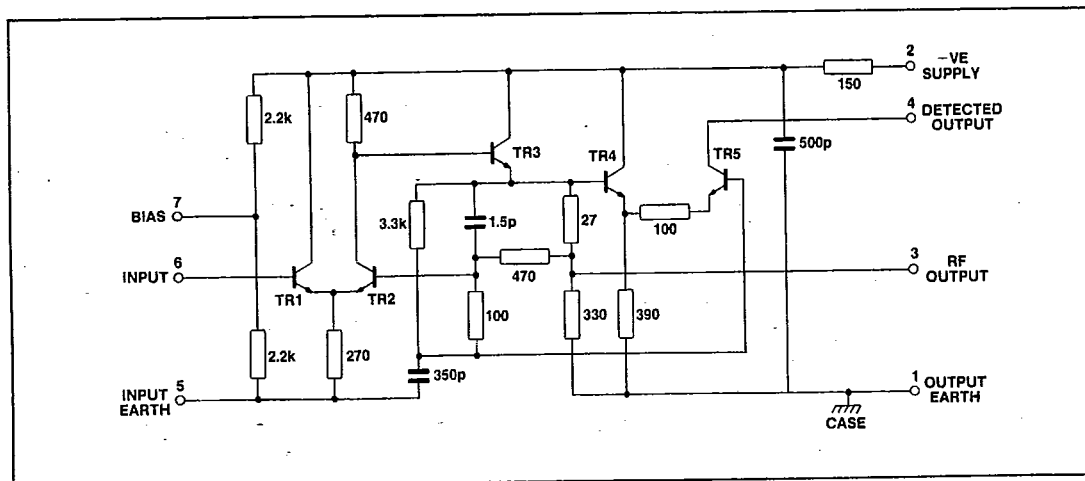


Fig.2 Circuit diagram SL521

ELECTRICAL CHARACTERISTICS

Test conditions (unless otherwise stated):

Temperature = +22°C ± 2°C

Supply voltage = +6V

DC connection between input and bias pins.

T-73-43

Characteristic	Circuit	Value			Units	Conditions
		Min.	Typ.	Max.		
Voltage gain, f = 30MHz	A	11.5		12.5	dB	10 ohms source, 8pF load
	B	11.3		12.7		
	C	11.0		13.0		
Voltage gain, f = 60MHz	A	11.3		12.7	dB	
	B	11.0		13.0		
	C	10.7		13.3		
Upper cut-off frequency (Fig. 3)	A	150	170		MHz	
	B	140	170			
	C	130	170			
Lower cut-off frequency (Fig. 3)	ABC		5	7	MHz	10 ohms source, 8pF load
Propagation delay	ABC		2		ns	
Maximum rectified video output current (Fig. 4 and 5)	A	1.00		1.10	mA	f = 60MHz, 0.5V rms input
	B	0.95		1.15		
	C	0.90		1.20		
Variation of gain with supply voltage	ABC		0.7		db/V	
Variation of maximum rectified output current with supply voltage	ABC		25		%/V	
Maximum input signal before overload	ABC	1.8	1.9		V rms	See note below
Noise figure (Fig. 6)			4	5.25	dB	f = 60MHz, R _s = 450 ohms
Supply current	A	12.5	15.0	18.0	mA	
	B	12.5	15.0	18.0		
	C	11.5	15.0	19.0		
Maximum RF output voltage			1.2		Vp-p	

Note: Overload occurs when the input signal reaches a level sufficient to forward bias the base-collector junction to TR1 on peaks.

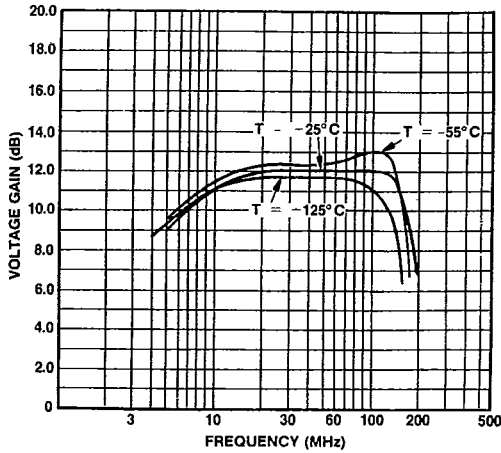


Fig.3 Voltage gain v. frequency (typical)

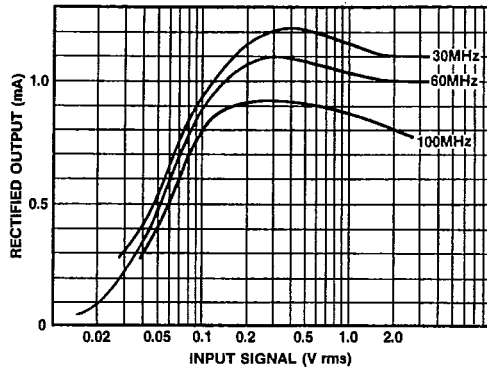


Fig.4 Rectified output current v. input signal (typical)

PLESSEY SEMICONDUCTORS

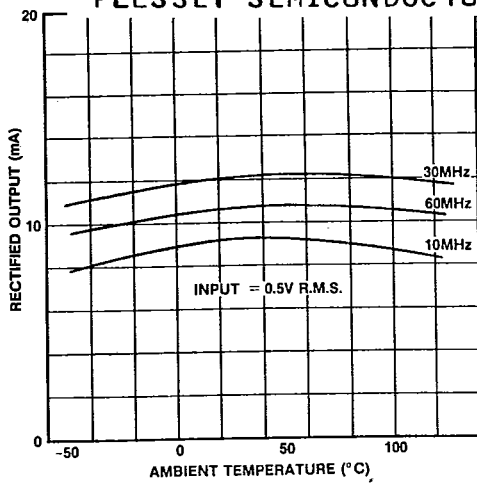


Fig.5 Maximum rectified output current v. temperature (typical)

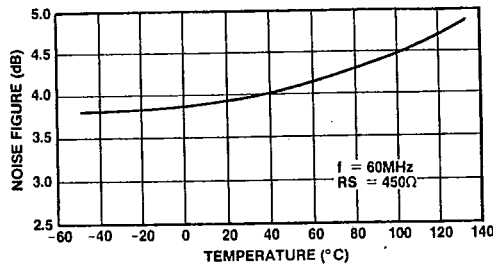


Fig.6 Noise figure v. temperature (typical)

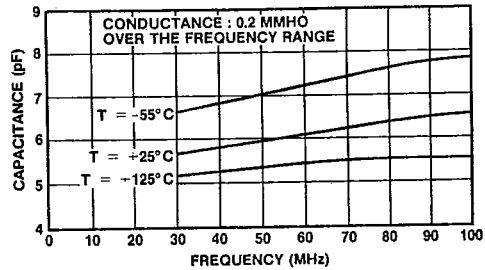


Fig.7 Input admittance with open-circuit output (typical)

OPERATING NOTES

The amplifiers are intended for use directly coupled, as shown in Fig.8.

The seventh stage in an untuned cascade will be giving virtually full output on noise.

Noise may be reduced by inserting a single tuned circuit in the chain. As there is a large mismatch between stages a simple shunt or series circuit cannot be used. The choice of network is also controlled by the need to avoid distorting the logarithmic law; the network must give unity voltage transfer at resonance. A suitable network is shown in Fig.9. The value of C1 must be chosen so that at resonance its admittance equals the total loss conductance across the tuned circuit. Resistor R1 may be introduced to improve the symmetry of filter response, providing other values are adjusted for unity gain at resonance.

A simple capacitor may not be suitable for decoupling the output line if many stages and fast rise times are required. Alternative arrangements may be derived, based on the parasitic parameters given.

Values of positive supply line decoupling capacitor required for untuned cascades are given below. Smaller values can be used in high frequency tuned cascades.

	Number of stages			
	6 or more	5	4	3
Minimum capacitance	30nF	10nF	3nF	1nF

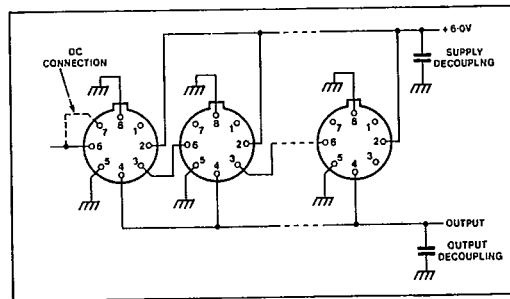


Fig.8 Direct coupled amplifiers

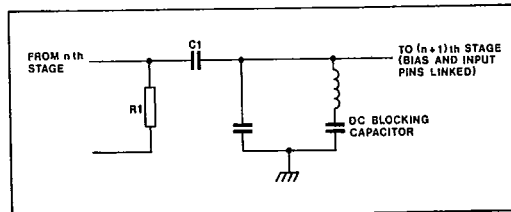


Fig.9 Suitable interstage tuned circuit

The amplifiers have been provided with two earth leads to avoid the introduction of common ground lead inductance between input and output circuits. The equipment designer should take care to avoid the subsequent introduction of such inductance.

The 500pF supply decoupling capacitor has a resistance of, typically, 10Ω. It is a junction type having a low breakdown voltage and consequently the positive supply current will increase rapidly if the supply voltage exceeds 7.5V (see Absolute Maximum Ratings).

Parasitic Feedback Parameters (Approximate)

PLESSEY SEMICONDUCTORS

The quotation of these parameters does not indicate that elaborate decoupling arrangements are required; the amplifier has been designed specifically to avoid this requirement. The parameters have been given so that the necessity or otherwise of further decoupling, may become a matter of calculation rather than guesswork.

$$\frac{\widehat{I_4}}{V_6} = \frac{\text{RF current component from pin 4}}{\text{Voltage at pin 6}} = 20 \text{ mmhos}$$

(This figure allows for detector being forward biased by noise signals).

$$\frac{V_6}{V_4} = \frac{\text{Effective voltage induced at pin 6}}{\text{Voltage at pin 4}} = 0.003$$

$$\frac{I_2}{V_6} = \frac{\text{Current from pin 2}}{\text{Voltage at pin 6}} = 6 \text{ mmhos (f = 10MHz)}$$

$$\left[\frac{V_6}{V_2} \right]_a = \frac{\text{Voltage induced at pin 6}}{\text{Voltage at pin 2}} = 0.03 \text{ (f = 10MHz)}$$

Voltage at pin 2
(pin 6 joined to pin 7 and
fed from 300Ω source)

$$\left[\frac{V_6}{V_2} \right]_b = \frac{\text{Voltage induced at pin 6}}{\text{Voltage at pin 2}} = 0.01 \text{ (f = 10MHz)}$$

Voltage at pin 2
(pin 7 decoupled)

$$\frac{I_2}{V_6} \left[\frac{V_6}{V_2} \right]_a \left[\frac{V_6}{V_2} \right]_b \text{ decrease with frequency above 10MHz at 6dB/octave}$$