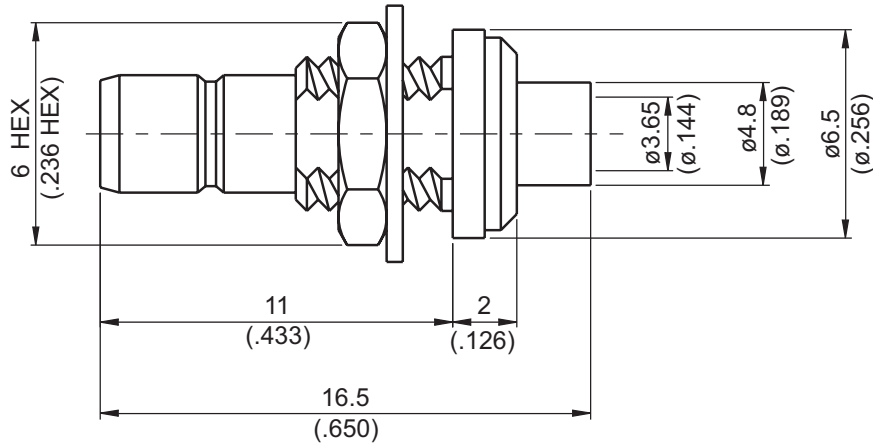


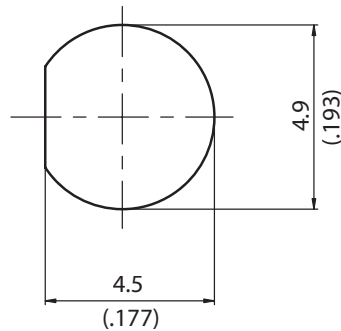
SMB8305-0141

SMB Jack Solder For Bulkhead

50Ω



MOUNTING HOLE :



Parts	Material	Plating (Micro-inch)
Hex Nut	Brass	Gold 5 Over Nickel 50 Over Copper 50
Lock Washer	Brass	Gold 5 Over Nickel 50 Over Copper 50
Contact Pin	Brass	Gold 20 Over Nickel 50 Over Copper 50
Insulator	Teflon	
Barrel	Brass	Gold 5 Over Nickel 50 Over Copper 50
Body	Brass	Gold 5 Over Nickel 50 Over Copper 50

Weight: 1.65 g

Suitable Cables: Semi-Rigid.141

This part number complies with RoHS.

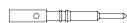
Notice: JYEBAO reserves the right to make modifications deemed appropriate.

CABLE ASSEMBLY INSTRUCTION

SMB8305-0141

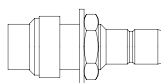
JYE BAO CO., LTD.

E



CONTACT PIN

A

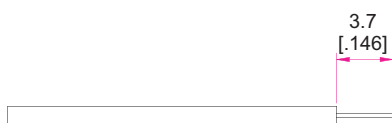


BODY

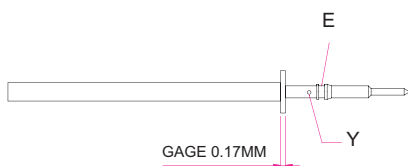
* TOOLS AND FIXTURES ARE REFERENCE ON
PAGE 306 OF JYEBAO'S 2005 CATALOG.

DIAGRAM

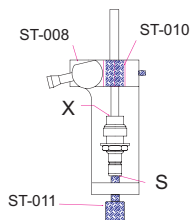
ASSEMBLING INSTRUCTION



Step 1: STRIP AS SHOWN.



Step 2: PUT 0.17 MM GAGE IN PLACE, INSERT CABLE'S CENTER CONDUCTOR INTO CENTER PIN AND SOLDER IN "Y".



Step 3: INSERT PREPARED CABLE INTO SOLDERING FIXTURE " ST-008 ". USE INSERT TOOL " ST-010 " AND LOCATOR TOOL " ST-011 " TO FIX THE CONNECTOR . SOLDER IN " X " .

This part number complies with RoHS.

Notice: JYEBAO reserves the right to make modifications deemed appropriate.