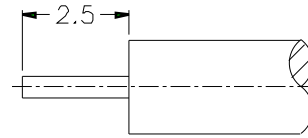
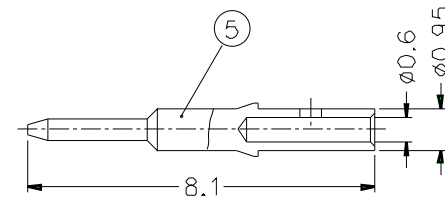
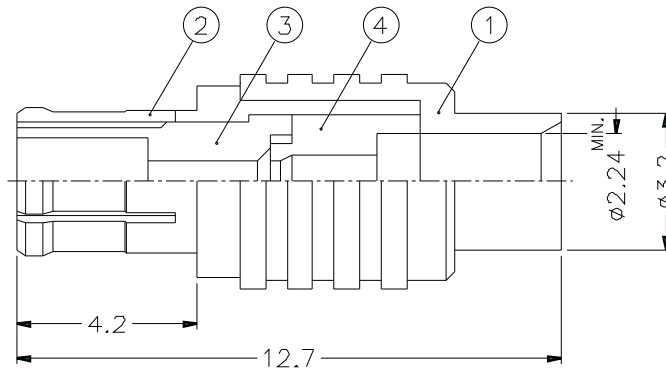


		1		2		3		4		5		6		7		8	
REVISIONS																	
ISS	ZONE	DESCRIPTION\PER REQUEST\DATE															



RECOMMENDED
CABLE STRIPPING DIM'S



NOTES: FINISH (PLATING THICKNESS IN MICRO-INCHES)

1. BRASS PER QQ-B-626
2. NICKEL PL. 100 MIN. THICK OVER COPPER STRIKE
3. BERYLLIUM COPPER PER QQ-C-530
4. GOLD PL. 30 MIN. THICK OVER NICKEL PL. 100 MIN. THICK OVER COPPER STRIKE
5. TEFLON MIL-P-19468

1. CONTACT PIN TO SOLDER

DIMENSIONS ARE IN MILLIMETERS										PART NO. MCX1181A1-NT30G-11-50		Amphenol					
UNLESS OTHERWISE SPECIFIED TOLERANCES										APPROVED						DATE	
0.5-6 = ±0.2												10-11-01'		TITLE MCX DIRECT SOLDER PLUG (FOR .085", .086")			
6-30 = ±0.4										CHECKED		DATE					
30-120 = ±0.6												10-11-01'		DRAWING NO. KJ-MCX1181A1-NT30G-.085-50			
120-315 = ±1										DRAWN		DATE					
315-1000 = ±1.6												10-11-01'		ITEM NO.			
1000-2000 = ±2.4										FILE NO.							

5	CONTACT PIN	NOTE 1	NOTE 4	1	MCX1121A1-5-095/06
4	INSULATOR	NOTE 5	NATURAL	1	MCX1181A1-4
3	INSULATOR	NOTE 5	NATURAL	1	MCX1121A1-3
2	BODY	NOTE 3	NOTE 2	1	MCX1121A1-2-B
1	HOUSING	NOTE 1	NOTE 2	1	MCX1181A1-1-32/224
NO.	DESCRIPTION	MATERIAL	FINISH	Q'TY	DRAWING NO.

		1		2		3		4		5		6		7		8	
--	--	---	--	---	--	---	--	---	--	---	--	---	--	---	--	---	--