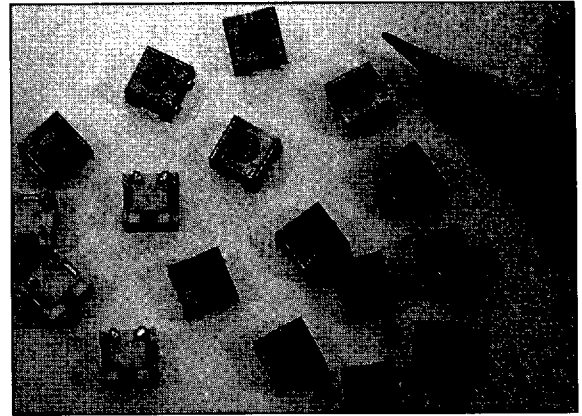


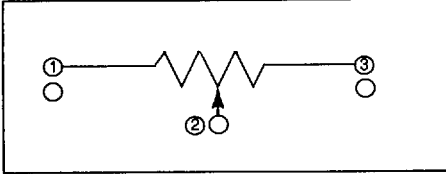
# Trimming Potentiometer

## FEATURES

- SEALED SURFACE MOUNT PACKAGE
- LOW PROFILE AND WIDE RESISTANCE RANGE
- SINGLE TURN
- SMALL 3.1 mm x 3.4 mm SIZE
- TAPE AND REEL FOR AUTOMATIC MOUNTING
- BOTH FLOW AND REFLOW SOLDERING COMPATIBLE

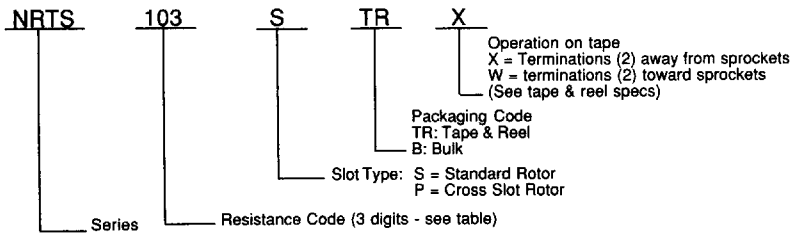


## CIRCUIT SCHEMATIC



SURFACE MOUNT

## PART NUMBERING SYSTEM



## STANDARD RESISTANCE TABLE\*

220	221
330	331
470	471
1000	102
2200	222
3300	332
4700	472
10,000	103
22,000	223
33,000	333
47,000	473
100,000	104
220,000	224
330,000	334
470,000	474
1,000,000	105

\* Please Contact NIC for Availability of Other Values

## CHARACTERISTICS

Power Rating at 70°C (Derate to 0 Watt at 85°C)	50mW (1/20W)
Operating Temperature Range	-40° to +85°C
Resistance Range	220 Ohm to 1 MegOhm
Max. Operating Voltage	15VDC
Contact Resistance Variation (Peak Noise)	5% Max.
Temperature Coefficient	±250 ppm/°C (-20°C to +85°C)
Full Rotation Angle (Nominal)	240° - 280°
Rotational Torque	10 ~ 150 g-cm
Resistance Taper	Linear

## ENVIRONMENTAL TEST

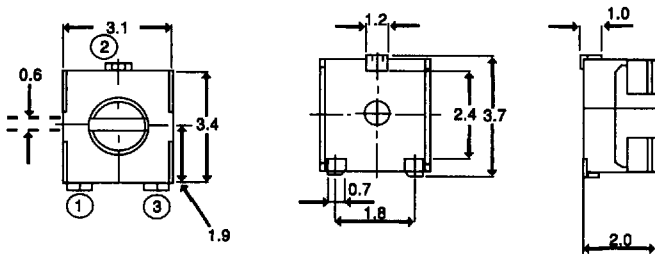
## (TRS) TOTAL RESISTANCE SHIFT

Thermal (+70°C, 1000 Hrs.)	TRS 5%
Humidity (90 - 95% Rh, +40°C, 1000 Hrs.)	TRS 5%
Resistance to Soldering Heat (10 Seconds)	TRS 5% (250°C)
Load Life (1000 Hrs.)	TRS 5%
Rotational Cycling (10 Cycles)	TRS 15%

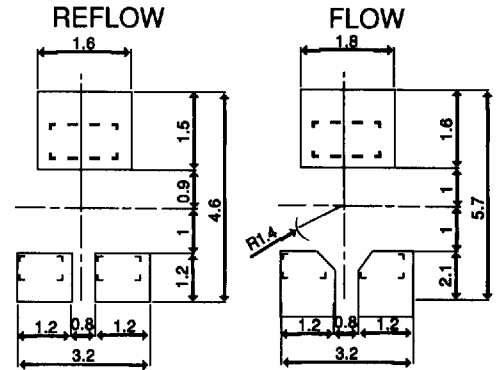


## DIMENSIONS IN mm

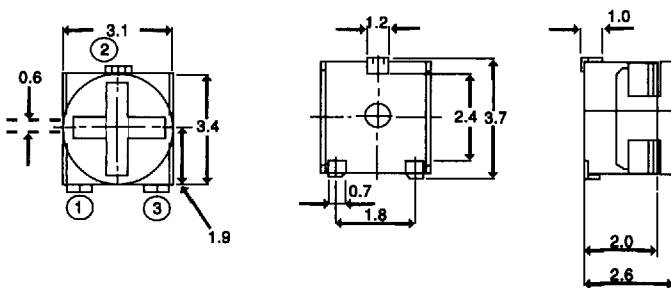
P/N: NRTS xxx S



## RECOMMENDED PAD DIMENSIONS IN mm



P/N: NRTS xxx P



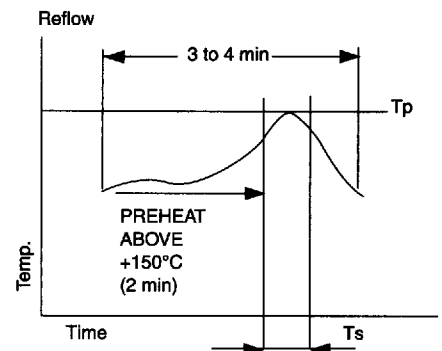
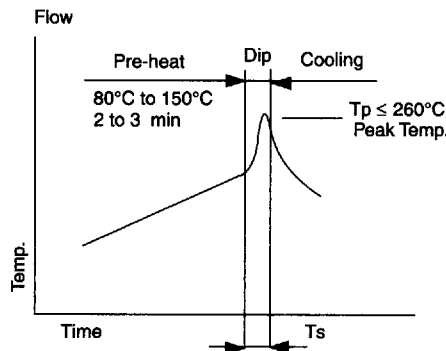
## RECOMMENDED SOLDERING PROFILE

### FLOW

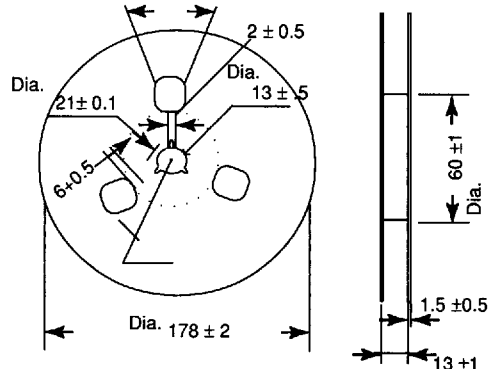
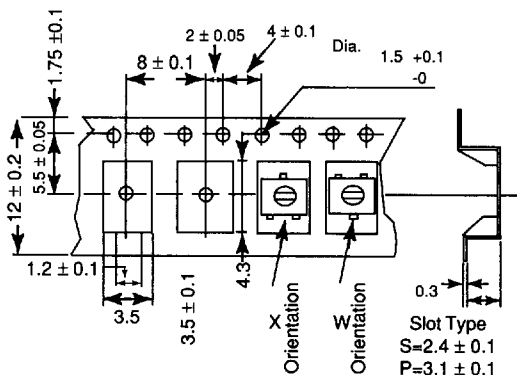
$T_p(\text{max.})$	250°C
$T_s(\text{max.})$	5 Sec.

### REFLOW

Recommended Limits		
$T_p(\text{max.})$	240°C	250°C
$T_s(\text{max.})$	30 Sec.	20 Sec.



## TAPE AND REEL SPECIFICATIONS



TAPE MATERIAL: EMBOSSED PLASTIC



NIC COMPONENTS CORPORATION

70 Maxess Rd., Melville, New York 11747 • (516) 396-7500 FAX 516-396-7575 173