

RF PASSIVE COMPONENTS

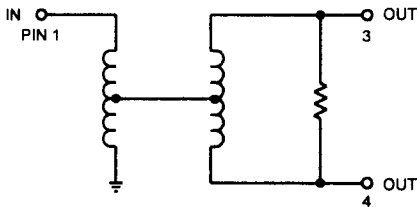
DESCRIPTION

The CPD-101-75 is a wideband RF, subminiature surface mount 2-way power divider/combiner suitable for pick and place assembly.

This device offers low insertion loss and excellent phase and amplitude balance over a very broad bandwidth and the low VSWR at all ports minimize circuit interface problems.

The CPD-101-75 base, cover, and internal construction consists of high temperature materials to withstand even the most rigorous reflow profiles.

FUNCTIONAL SCHEMATIC



SPECIFICATIONS

PARAMETER	MIN.	TYP.	MAX.	UNITS
Impedance		75		Ohms
Frequency Range	5		1000	MHz
Temperature Range	-40		+85	°C
Insertion loss		0.6	1.5	dB
Amplitude Balance		±0.10	±0.5	dB
Phase Balance		±1	±3	Deg
Isolation	16	27		dB
Return Loss (All Ports)	15	21		dB

PACKAGE

COVER MATERIAL:

Plastic

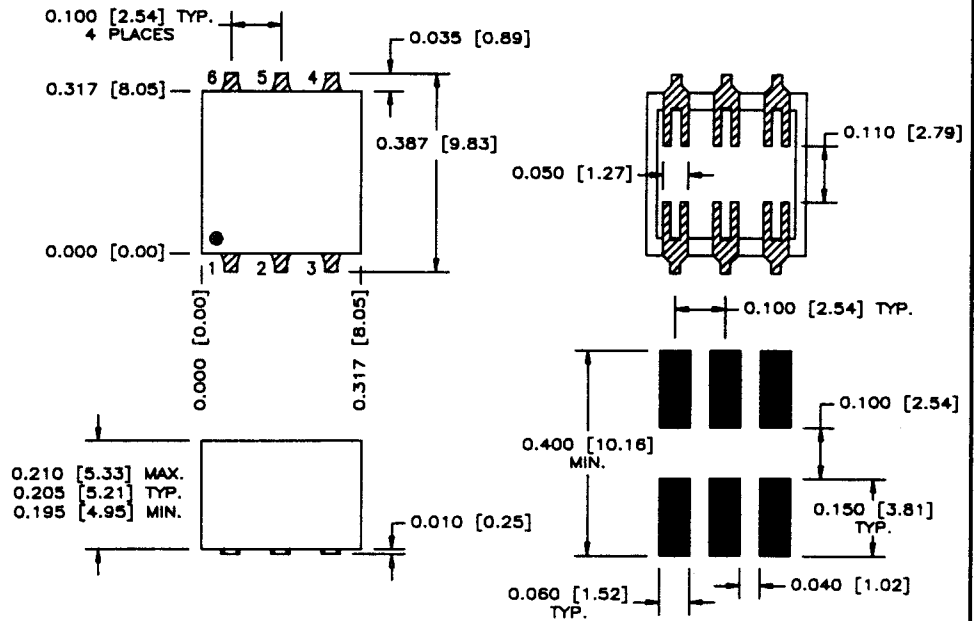
BASE MATERIAL:

Alumina

LEADS:

60/40 Tin Lead plated phosphor bronze

ALL DIMENSIONS ARE IN INCHES [mm].



TOLERANCES:

.XX = ±0.01
 .XXX = ±0.005

Recommended Land Pattern

Pin	Function
1	Input
2	Ground
3	Output
4	Output
5	Ground
6	Ground