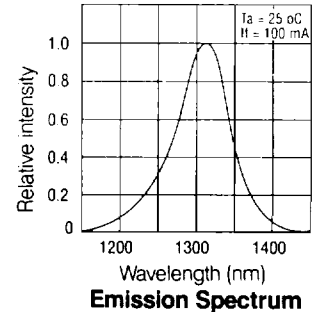
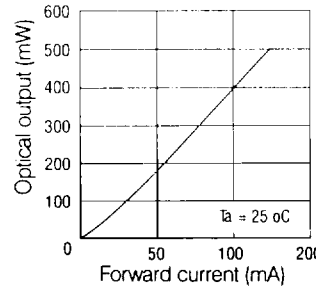
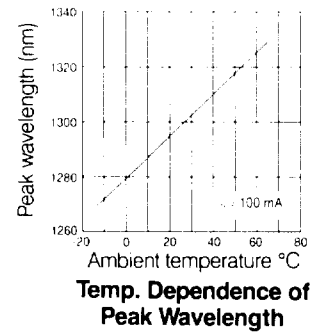
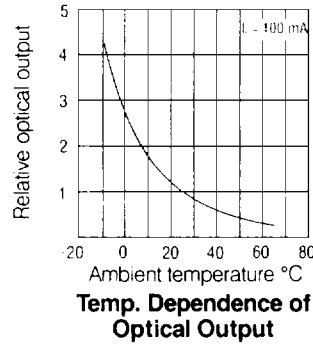


IRE 1300 Series

Specifications	Units	
Spectral Characteristics		
Wavelength - Range	nm	1270 - 1330
Spectral width - FWHM	nm	60 typ / 100 max
Typical spectral shift with temperature	nm/°C	0.7
Singlemode fiber coupled 9/125μm	μW	5 to 20
Multimode fiber coupled 50/125μm	μW	50 to 100
Multimode fiber coupled 62.5/125μm	μW	60 to 125
Drive Characteristics		
Maximum current	mA	150
Maximum forward voltage	V	1.8
Typical bandwidth	MHz	150
Rise/fall time	ns	3
Laser Temperature Range		
Module operating temperature	°C	-10 to +60
Storage temperature	°C	-40 to +85
Mechanical		
Minimum mating cycles		500
Repeatability	dB	± 0.5
Intermatability	dB	± 1.0

Receptacle and Coaxial LEDs

All parameters specified at 25°C and are typical unless otherwise stated.

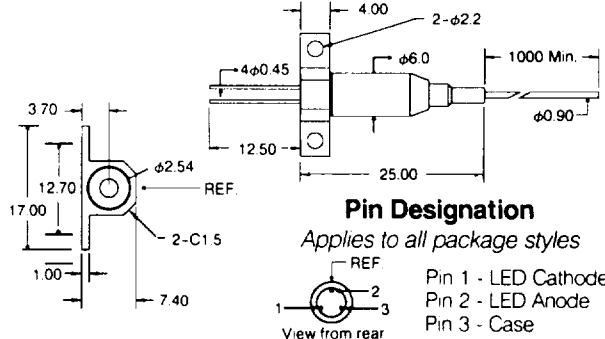
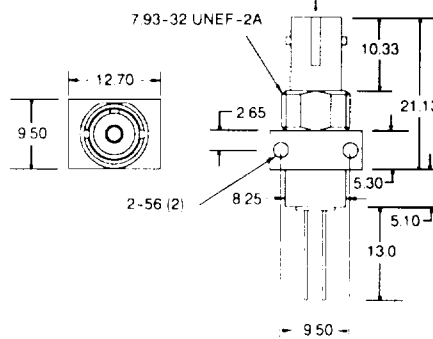
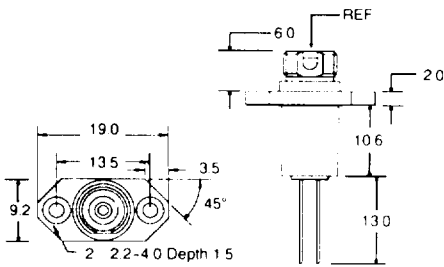


Package Drawings

FC Package (08)

ST Package (04, 24)

Coaxial Fiber Pigtailed Package (06, 26)



Laser Safety

CAUTION: Use of controls or adjustment or performances of procedures other than those specified herein may result in hazardous radiation exposure.

Indium Gallium Arsenide Phosphide lasers emit infrared radiation which is invisible to the human eye. When in use, safety precautions should be taken to avoid the possibility of eye damage.

Do not stare directly at the device or view an operating laser at close range. If viewing is required, the beam should only be observed by reflection from a matte surface utilizing an image converter or by use of a suitable fluorescent screen.

LASER DIODE, INC., reserves the right to make changes at any time as deemed practical and/or necessary to improve the design and to supply the best possible product.

Information provided is believed at this time to be accurate and reliable. No responsibility is assumed for its use, nor for any infringements on the rights of others.

For further information on this product or others of Laser Diode, Inc., please call:



Laser Diode, Inc.

4 Olsen Avenue, Edison, New Jersey 08820 U.S.A.
908/549-9001 • FAX 908/906-1559



Part Numbers

IRE 13XX-XXX

Package Style

- 06=Coaxial singlemode
- 26=Coaxial multimode
- 08=FC receptacle
- 04=ST singlemode receptacle
- 24=ST multimode receptacle

Power Option

See Table Below

Power Options

Package types 04, 06 or 08

- Singlemode fiber coupled (9/125μm)
- 006=6μW min
- 020=20μW min
- 010=10μW min

Package Types 24 or 26

- Multimode Fiber Coupled (50/125)
- 050=50μW min
- 100=100μW min

Call sales office for power and part number of 62.5/125 fiber coupled devices.