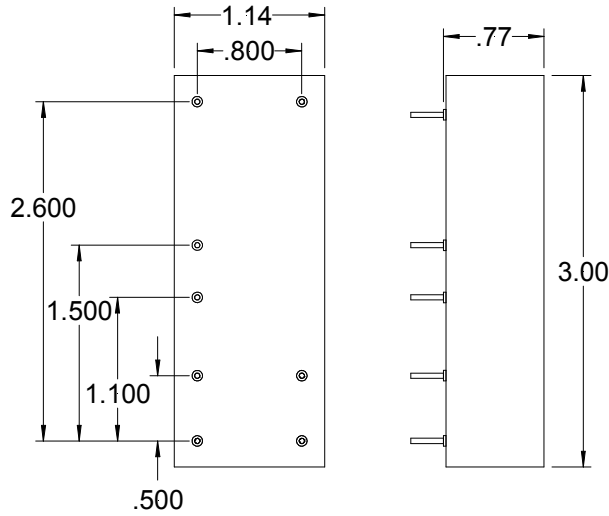


Computer Components, Inc.

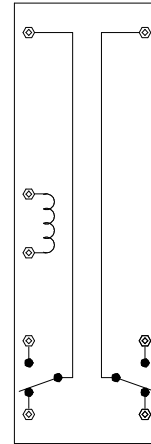
P/N: 400-133

Sketch: (not to scale)



Tolerances: .XXX = ± .010
.XX = ± .020

Circuit Diagram: (bottom view)



Case:

Metal:
Plastic:
None:

Terminals:

Diameter .040
Length .250
Centers see dwg.

Contact Specifications:

Maximum switching power 50 watts
Maximum switching current 3.0 amps dc
Maximum switching voltage 2500 volts dc
Breakdown voltage 5000 volts dc

Contact Configuration:

A B C 2 D
Mercury Dry

Electrostatic shield:

Yes: No:

Other Contact Data:

High voltage contacts

Relay Specifications:

Coil resistance (+/- 10% @25°C) 1000 ohms
Nominal coil voltage 24 vdc
Maximum coil voltage 36 vdc
Pullin voltage - max. 18 vdc
Dropout voltage - min. 2 vdc
Dielectric coil/case n/a
coil/cont 5000 vdc
cont/cont 5000 vdc

Other Relay Data:

Insulation resistance – 500 x 10⁹ Ohms
minimum at 500 Vdc (+20°C to +60°C)

Magnetic shield:

Yes:
No:

Adjustment:

Single side stable:
Bi-stable:

Ref: Lam Research P/N 644-010892-001

Equivalent to: Mfr. _____ P/N _____

Description: Magnetic Reed Relay - Two pole – Form C – 24 VDC – High voltage contacts

Prepared By: NHN

Date: 3-26-01

Customer: VARIOUS