

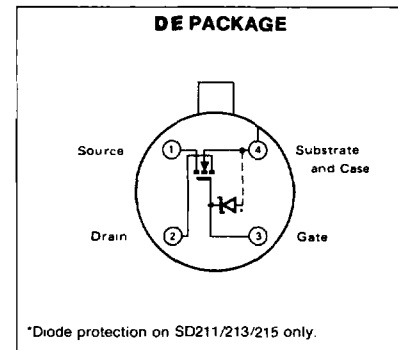
FEATURES

- LOW FEEDBACK CAPACITANCE — 0.30pF
- LOW DRAIN NODE CAPACITANCE — 1.3pF
- LOW GATE NODE CAPACITANCE — 2.4pF
- LOW FEEDTHROUGH AND FEEDBACK TRANSIENTS
- ION-IMPLANTED FOR GREATER RELIABILITY
- EXCELLENT ISOLATION FROM INPUT TO OUTPUT — 120dB
- 35V DRAIN-TO-SOURCE VOLTAGE FOR SD210/211

APPLICATIONS

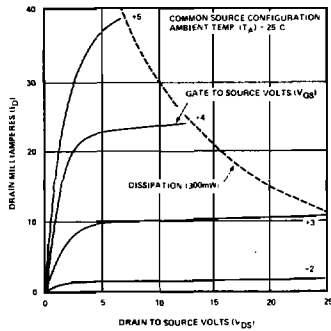
- SWITCH DRIVER
- ANALOG SWITCH
- MULTIPLEXERS
- DIGITAL SWITCH
- SAMPLE AND HOLD CHOPPERS
- A-TO-D CONVERTERS
- D-TO-A CONVERTERS

PIN CONFIGURATION

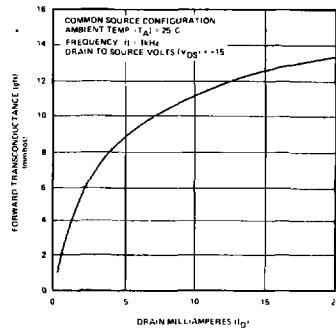


CHARACTERISTIC CURVES

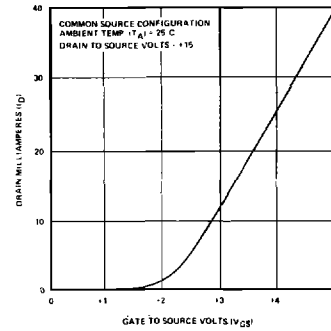
DRAIN CURRENT VS DRAIN-TO-SOURCE VOLTAGE



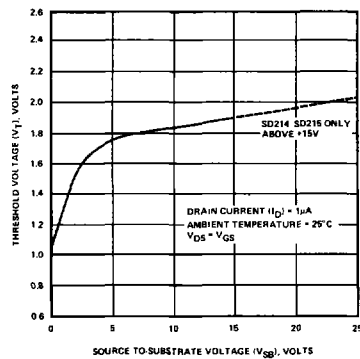
1kHz FORWARD TRANSCONDUCTANCE VS DRAIN CURRENT



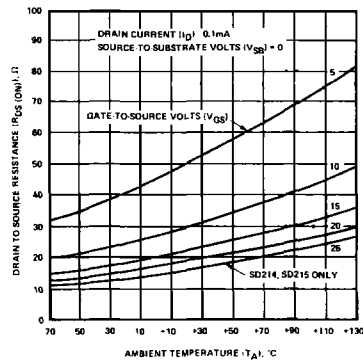
DRAIN CURRENT VS GATE-TO-SOURCE VOLTAGE



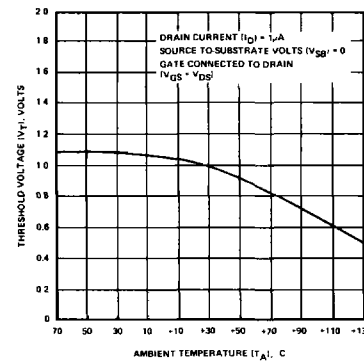
THRESHOLD VOLTAGE VS SOURCE-TO-SUBSTRATE VOLTAGE



DRAIN-TO-SOURCE RESISTANCE VS TEMPERATURE

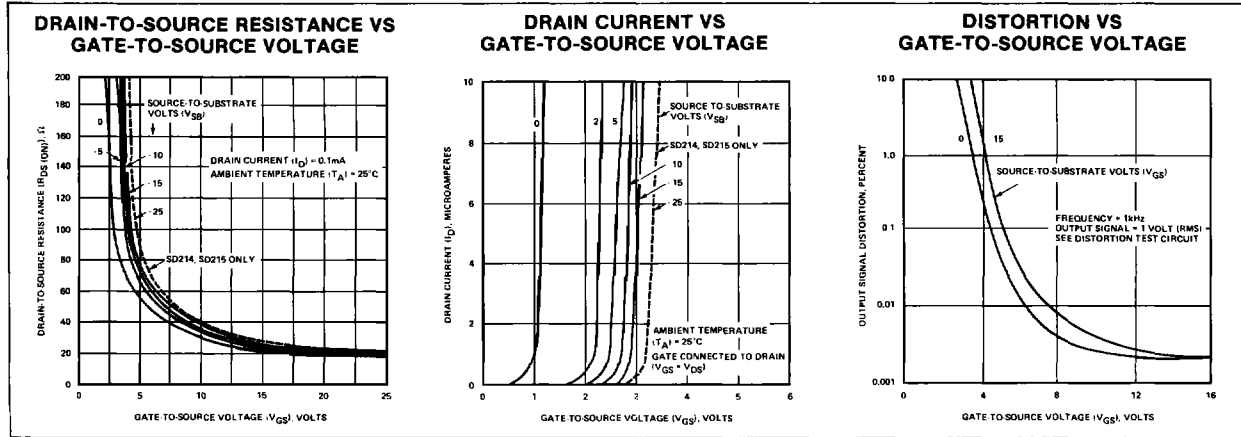


THRESHOLD VOLTAGE VS TEMPERATURE



ANALOG

CHARACTERISTIC CURVES (Continued)

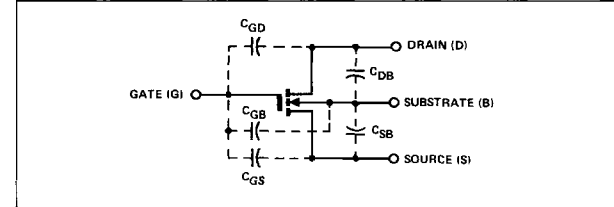


SWITCHING CHARACTERISTICS

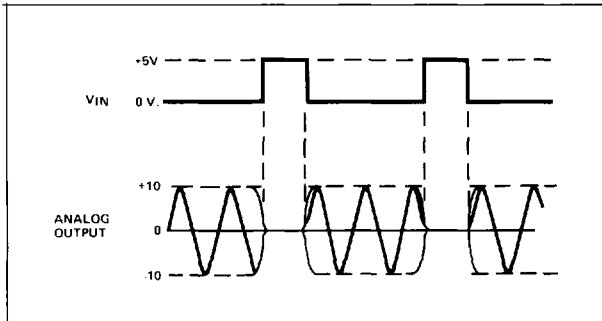
V_{DD}	R_L	t_d (ON) (ns)		t_r (ns)		t_{OFF} (ns)	
		TYP	MAX	TYP	MAX	TYP	MAX
5	680	0.6	1.0	0.7	1.0	9.0	*
10	680	0.7		0.8		9.0	
15	1k	0.9		1.0		14.0	

* t_{OFF} is dependent on R_L and C_L and does not depend on the device characteristics.

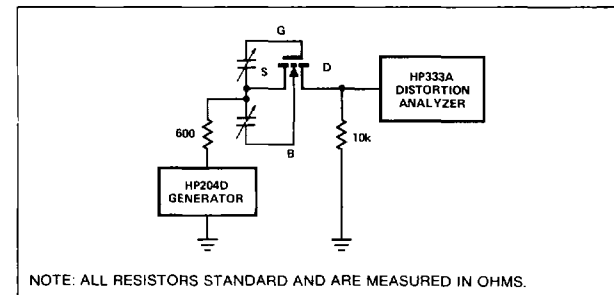
CAPACITANCE MODEL



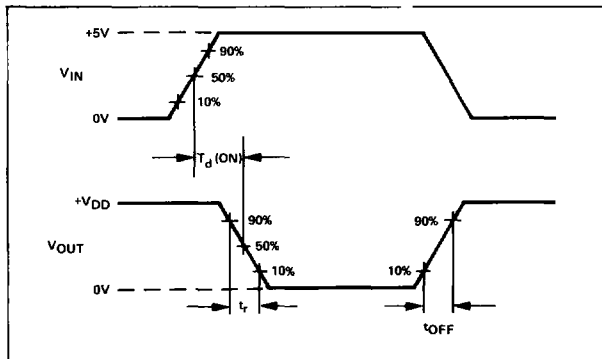
TYPICAL WAVEFORMS



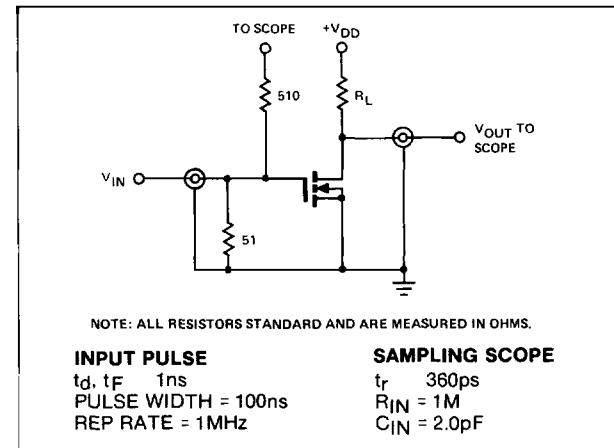
DISTORTION TEST CIRCUIT



SWITCHING WAVEFORMS



TEST CIRCUIT



D-MOS DRIVER/SWITCH APPLICATION

