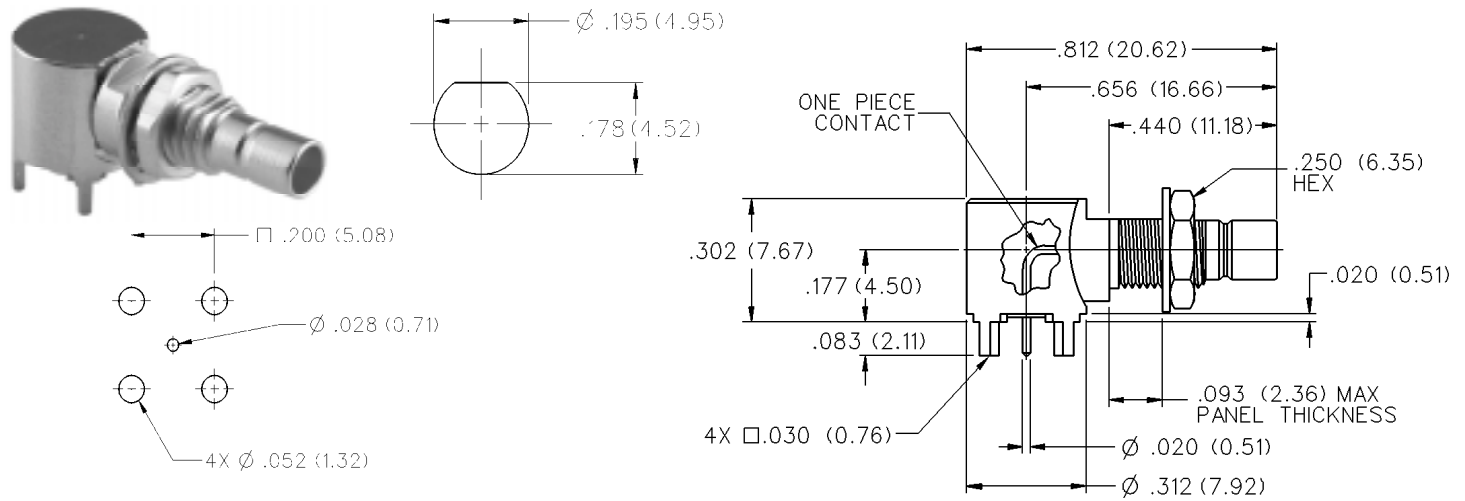


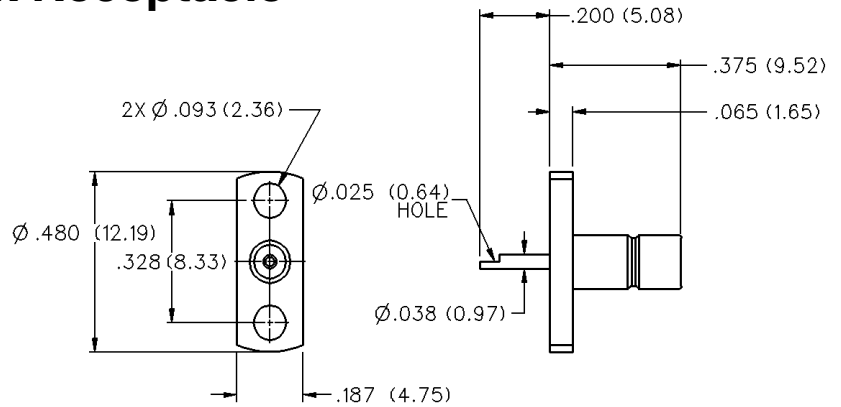
## Right Angle Bulkhead Jack Receptacle



GOLD PLATED	NICKEL PLATED
131-8701-501	131-8701-506

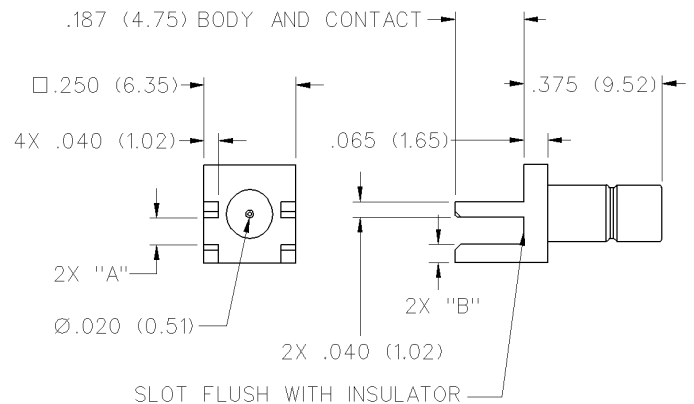
\* For PC board thickness other than .062 inches, contact factory.

## 2-Hole Flange Mount Jack Receptacle



GOLD PLATED	NICKEL PLATED
131-8701-601	131-8701-606

## End Launch Jack Receptacle



BOARD THICKNESS	GOLD PLATED	NICKEL PLATED	"A"	"B"
.062 (1.57)	131-8701-841	131-8701-846	.068 (1.73)	.047 (1.19)
.047 (1.19)	131-8701-851	131-8701-856	.053 (1.35)	.062 (1.57)