

THIS PRODUCT MANUFACTURED WITH LEAD-FREE PROCESSING

DESIGNED & DIMENSIONED IN MILLIMETERS [INCHES]

BNC5-J-C-XX-ST-BH2

DO NOT SCALE FROM THIS PRINT

TABLE 1					
ITEM	COMPONENT	-HF	-HN	-GF	-GN
1	SUB ASSEMBLY	SUB-BNC5-J-C-F-ST-BH2	SUB-BNC5-J-C-N-ST-BH2	SUB-BNC5-J-C-F-ST-BH2	SUB-BNC5-J-C-N-ST-BH2
2	SOCKET	BTNC-SKT-004-H		BTNC-SKT-004-G	
3	INSULATOR	BNC5-INS-002			
4	INNER FERRULE	MCX-FER-012-F	MCX-FER-012-N	MCX-FER-012-F	MCX-FER-012-N
5	FERRULE	MCX-FER-004-F	MCX-FER-004-N	MCX-FER-004-F	MCX-FER-004-N
6	GASKET	BTNC-GKT-001			
7	LOCK WASHER	BTNC-LWAS-001-F	BTNC-LWAS-001-N	BTNC-LWAS-001-F	BTNC-LWAS-001-N
8	HEX NUT	BTNC-NUT-001-F	BTNC-NUT-001-N	BTNC-NUT-001-F	BTNC-NUT-001-N

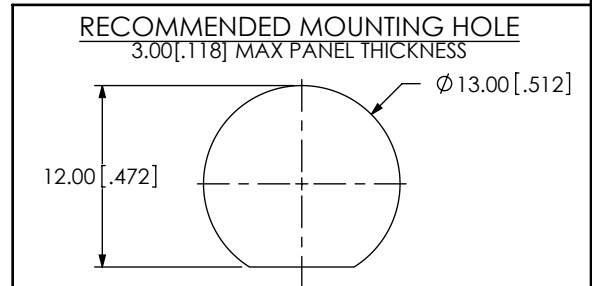
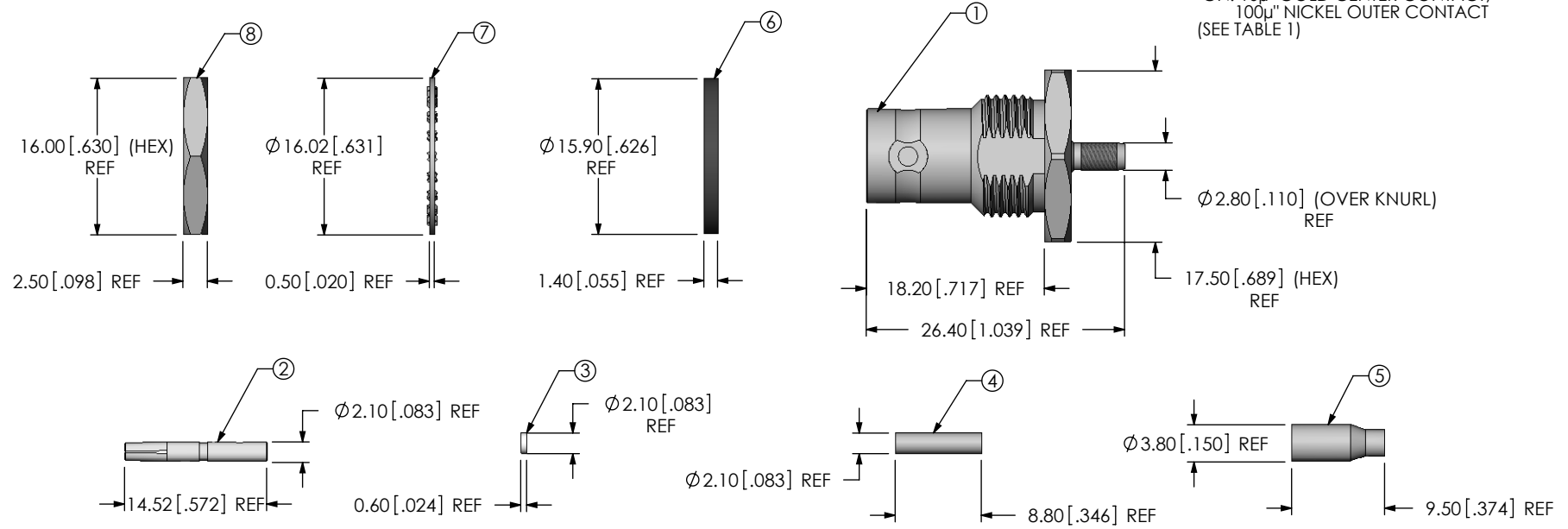
GENDER
-J: JACK

TERMINATION
-BH2: BULKHEAD FOR CCA-178 CABLE

TYPE
-C: CABLE

ORIENTATION
-ST: STRAIGHT

PLATING SPECIFICATION
 -HF: 30µ" GOLD CENTER CONTACT,
 3µ" GOLD OUTER CONTACT
 -HN: 30µ" GOLD CENTER CONTACT,
 100µ" NICKEL OUTER CONTACT
 -GF: 10µ" GOLD CENTER CONTACT,
 3µ" GOLD OUTER CONTACT
 -GN: 10µ" GOLD CENTER CONTACT,
 100µ" NICKEL OUTER CONTACT
 (SEE TABLE 1)



NOTES:
 1. Ⓢ REPRESENTS A CRITICAL DIMENSION.
 2. PRODUCT TO BE PACKAGED PER PACKING STANDARD CO-HD-WI-3040-M.

UNLESS OTHERWISE SPECIFIED, DIMENSIONS ARE IN MILLIMETERS [INCHES]. TOLERANCES ARE: DECIMALS ANGLES X.X: ±0.3 [.01] 5° X.XX: ±0.13 [.005] X.XXX: ±0.051 [.0020]	PROPRIETARY NOTE THIS DOCUMENT CONTAINS INFORMATION CONFIDENTIAL AND PROPRIETARY TO SAMTEC, INC. AND SHALL NOT BE REPRODUCED OR TRANSFERRED TO OTHER DOCUMENTS OR DISCLOSED TO OTHERS OR USED FOR ANY PURPOSE OTHER THAN THAT WHICH IT WAS OBTAINED WITHOUT THE EXPRESSED WRITTEN CONSENT OF SAMTEC, INC.		
		520 PARK EAST BLVD. NEW ALBANY, IN 47150 PHONE: 812-944-6733 FAX: 812-948-5047 e-Mail: info@SAMTEC.com code 55322	
MATERIAL: DO NOT SCALE DRAWING SHEET SCALE: 3:2 CABLE BODY, FERRULES, LOCK WASHER, HEX NUT: BRASS GASKET: SILICON SOCKET: PHOS BRONZE DIELECTRICS: PTFE		DESCRIPTION: BNC 50 OHM, STR JACK BULKHEAD FOR CCA-178	
		DWG. NO. BNC5-J-C-XX-ST-BH2	
BY: ALVIN W 07/13/2011		SHEET 1 OF 2	

IN PROCESS 1
STRIP AND TIN INNER CONDUCTOR

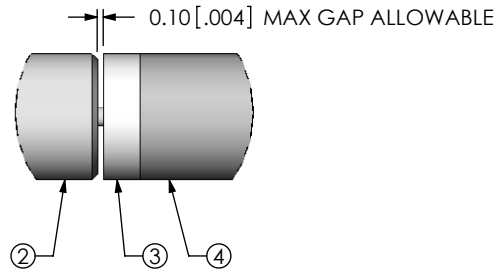
IN PROCESS 2
ADD HEAT SHRINK TUBE & FERRULE

IN PROCESS 3
FLARE SHIELD, ADD INSULATOR & INNER FERRULE

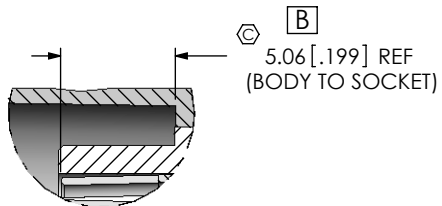
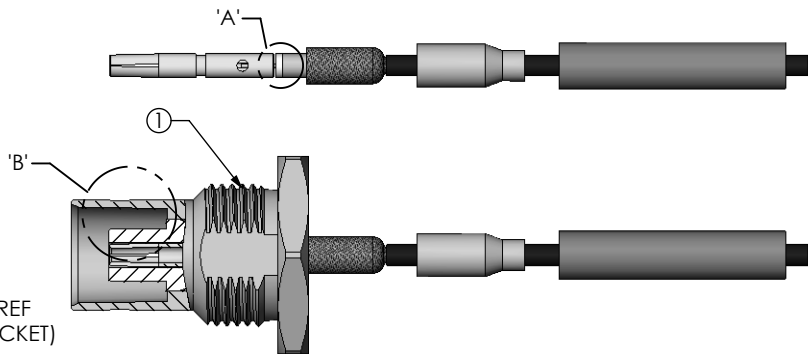
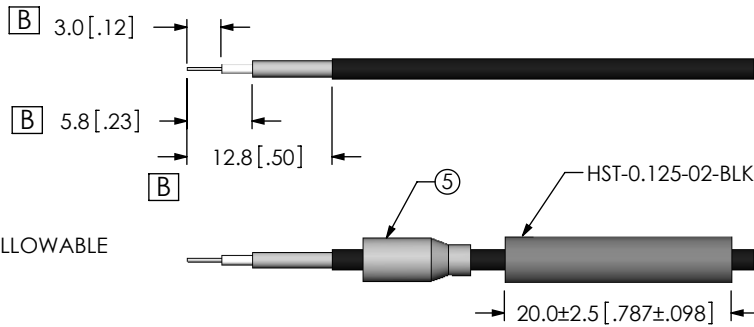
IN PROCESS 4
SOLDER SIGNAL PIN

IN PROCESS 5
ADD SUB-BNC5-J-C-X-ST-BH2

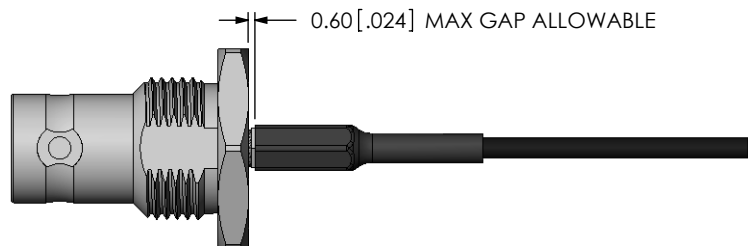
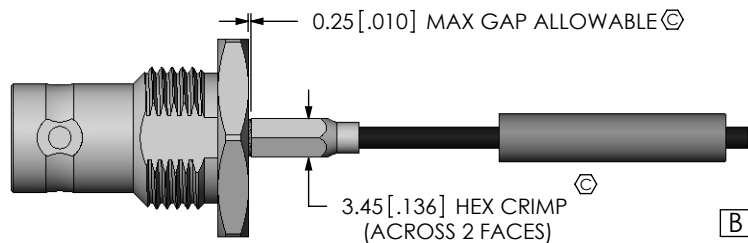
IN-PROCESS 6
CRIMP FERRULE
(USE RF CRIMP HAND TOOL #CAT-HT-126667-21 OR EQUIVALENT)
(USE .128" HEX DIE)



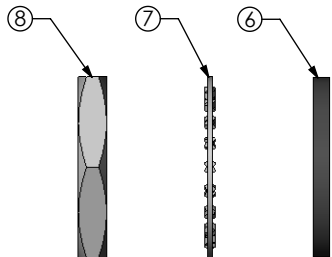
DETAIL 'A'
SCALE 8 : 1



DETAIL 'B'
SCALE 3 : 1




IN-PROCESS 7
APPLY HEAT TO SHRINK TUBING



PROPRIETARY NOTE
THIS DOCUMENT CONTAINS INFORMATION CONFIDENTIAL AND PROPRIETARY TO SAMTEC, INC. AND SHALL NOT BE REPRODUCED OR TRANSFERRED TO OTHER DOCUMENTS OR DISCLOSED TO OTHERS OR USED FOR ANY PURPOSE OTHER THAN THAT WHICH IT WAS OBTAINED WITHOUT THE EXPRESSED WRITTEN CONSENT OF SAMTEC, INC.

DO NOT SCALE DRAWING

SHEET SCALE: 3:2

 520 PARK EAST BLVD, NEW ALBANY, IN 47150 PHONE: 812-944-6733 FAX: 812-948-5047 e-Mail: info@SAMTEC.com code 55322	
DESCRIPTION: BNC 50 OHM, STR JACK BULKHEAD FOR CCA-178	
DWG. NO. BNC5-J-C-XX-ST-BH2	
BY: ALVIN W	07/13/2011
SHEET 2 OF 2	