

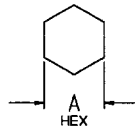
RED INDICATES ORIGINAL

DWG SIZE: C
 DATA CONTAINED IN THIS DOCUMENT IS PROPRIETARY TO TROMPETER ELECTRONICS, INC. AND SHALL NOT BE DISCLOSED, COPIED OR USED FOR REPRODUCTION OR MANUFACTURE WITHOUT EXPRESS WRITTEN PERMISSION.

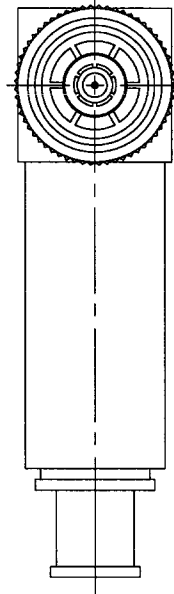
REVISIONS			310-0073	SH 1	
REV	EO	DESCRIPTION	DWN	APPROVED	DATE
G	12387	ADDED -224 & -225; ADDED NOTE [4] SHEET 2; SEE ECO	OKC	WAM	11/16/88

DASH NO	CABLES ACCOMMODATED	A HEX	B MAX	ASSEMBLE PER			
-201	M17/176-00002	.344	1.77	TAI-169			
-202	TWC-78-1						
-203	TWC-124-1A						
-204	10602, RAYCHEM						
-205	TWAC-78-1F2						
-206	782600130, RAYCHEM						
-207	83310 BELDEN						
-208	202-3927 MICRODOT						
-209	202-3942 MICRODOT						
-210	8451 BELDEN						
-211	202-3934 MICRODOT	.344	1.52	TAI-161			
-212	2524E0114, RAYCHEM						
-213	TWC-78-2						
-214	TWC-124-2						
-215	BL-982 TIMES						
-216	BL-1242 TIMES						
-217	GC875TM24H, GRUMMAN	.344	1.77	TAI-169			
-218	EPO 22188B, RAYCHEM						
-219	2526D1114, RAYCHEM						
-220	GC875SRR1, GRUMMAN						
-221	10614, RAYCHEM						
-222	10613, RAYCHEM						
-223	HMS2-1149, HUGHES						
-224	TWCP-124-3						
-225	PS66SPL, PRIME STOCK						
-301	GC875GC1, GRUMMAN				.344	1.52	TAI-161
-302	GC875GB1, GRUMMAN 5022E5111, RAYCHEM						
-303	7528A5314, RAYCHEM						
-304							
-305	M17/177-00001, THERMATICS	.344	1.76	TAI-154			
-306	TRC-50-2 M17/134-00002						
-307	TRC-75-1						
-308	TRC-75-2						
-309	TRC-50-1						
		.344	1.76	TAI-154			

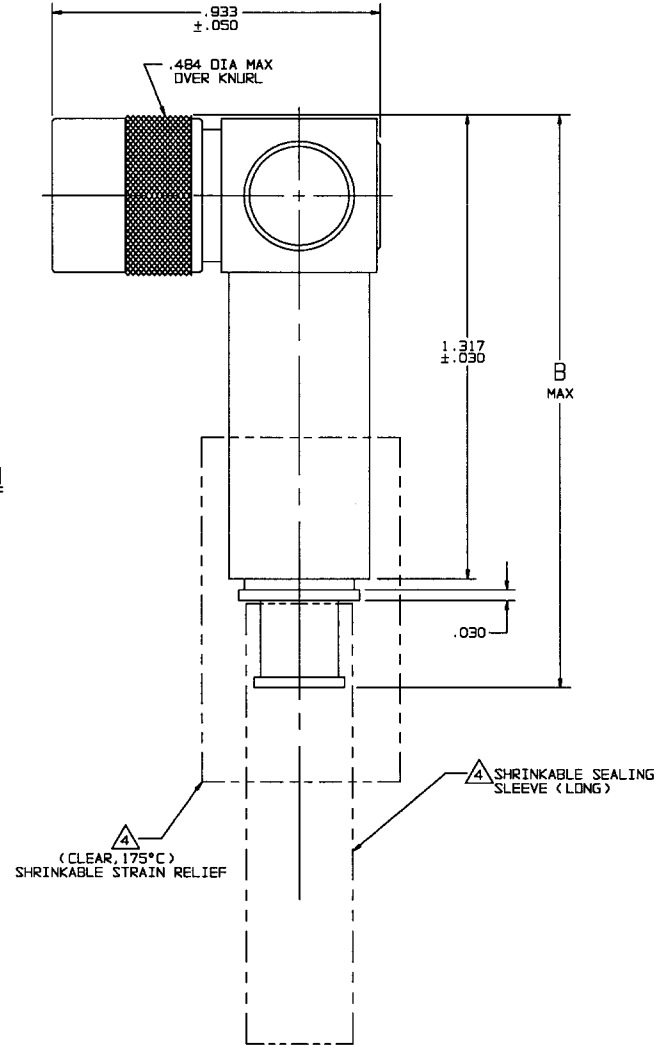
INCH	MM
.005	0.13
.030	0.76
.050	1.27
.344	8.74
.484	12.29
.933	23.70
1.00	25.40
1.25	31.75
1.317	33.45
1.47	37.34
1.52	38.61
1.75	44.45
1.76	44.70
1.77	44.96



RECOMMENDED
 HEX CRIMP
 SCALE: NONE



-201 SHOWN



- 1 SHRINKABLE STRAIN RELIEF AND/OR SHRINKABLE SEALING SLEEVE SUPPLIED LOOSE AS FOLLOWS:
- CABLE GROUPS -201 THROUGH -210, -217 THROUGH -223, -301, -302, -303, -305, -307 & -309
 - 1 SHRINKABLE STRAIN RELIEF (1.00 LONG)
 - 1 SHRINKABLE SEALING SLEEVE (1.25 LONG)
 - CABLE GROUPS -211 THROUGH -216, -306 & -308
 - 1 SHRINKABLE STRAIN RELIEF (1.75 LONG)
3. CONCENTRIC TWINAX/TRIAX TTM THREADED RIGHT ANGLE FULL CRIMP CABLE PLUG
2. FINISH: TFS-1A (NICKEL)
1. ALL DIM ARE IN INCHES

6. EXAMPLE OF COMPLETE MODEL NO:
 PLR3155AC S-201
 BASIC MODEL NO ——— CABLE GROUP DASH NO
 SAFETY WIRE ———
5. EXAMPLE OF COMPLETE PART NO:
 310-0073 S-201
 BASIC PART NO ——— CABLE GROUP DASH NO
 SAFETY WIRE ———

QTY	DESCRIPTION	PART NUMBER	ITEM
TOL UNLESS SPECIFIED .XX ± .03 .XXX ± .005 XXXXX ANGLES	TROMPETER ELECTRONICS, INC.	PLR3155AC/ PLR3155ACS	
DWN OKC 5-18-88	MATERIAL	CODE IDENT 14949	DRAWING NO. 310-0073
CHK WAM 6-8-88			REV G
ENGR			
NEXT ASSY	APPR WAM 7/16/88	SCALE 4/1	DATE 4/19/89 SHEET 1 OF 2