

## Specifications

Insulation Resistance: 1,000MΩ min. at 500 V DC  
 Withstanding Voltage: 500 V AC rms for 1 minute  
 Contact Resistance: 30mΩ max. at 10mA  
 Current Rating: 0.5A  
 Operating Temp. Range: -55°C to +85°C

## Materials and Finish

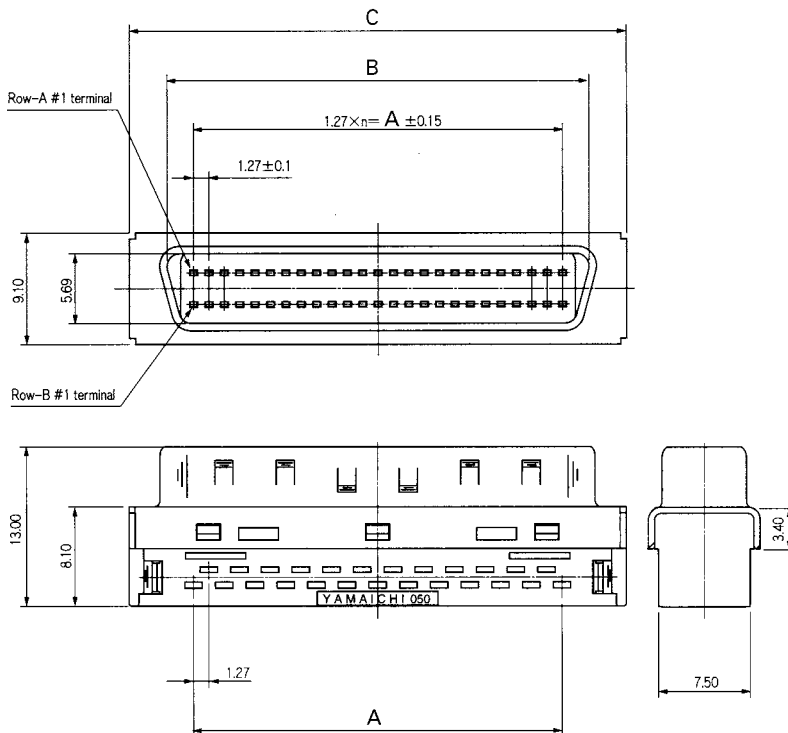
Housing: PBT (glass filled), UL94V-0  
 Contacts: Copper Alloy  
 Plating: Mating Face Contacts - Gold over Nickel  
 IDC Terminals - Solder over Nickel

## Features

- Half pitch interface connectors with SCSI-II pin type contacts
- Double-shield metal covers and over-mold covers provide full protection from EMI and ESD
- Cover variations include covers for thin I/O cables and screw lock covers for SCSI-III connection
- A variety of SCSI terminators (connectors with termination registers) available



## Applicable Dimensions (Reference Only)



## Part Number (Details)

**NHP 068 - 0 \* 0 - BS**

Series (plug)

No. of Leads

0 = IDC for Flat Cables  
 1 = IDC for Flat Cables  
 2 = IDC for Discrete Wires

Connection Type: 0 = IDC

Contact Plating:

B = Mating Face Contacts - Au (0.3µm min.) over Ni  
 S = IDC Terminals - SnPb (2.0-4.0µm) over Ni

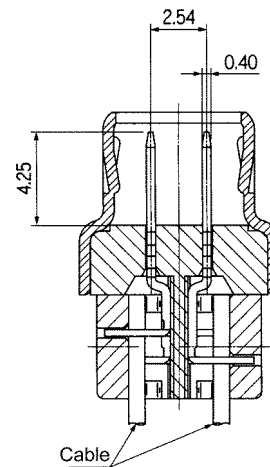
## Applicable Cables

**For type NHP0\*\*-000-BS:** 1.27mm pitch flat cable, AWG 28 (7/0.127) stranded wire, cable outer diameter 0.5 to 0.7mm

**For type NHP0\*\*-010-BS:** 1.27mm pitch flat cable, AWG 28 (7/0.127) stranded wire, cable outer diameter 0.8 to 1.1mm

**For type NHP0\*\*-020-BS:** 1.27mm pitch discrete wire, AWG 28 (7/0.127), AWG 30 (7/0.102) stranded wire or AWG 30 solid wire

## Contact Details



Part Number	No. of Leads	A	B	C
NHP026-000-BS	26	15.24	19.60	25.80
NHP026-020-BS	26	15.24	19.60	25.80
NHP050-000-BS	50	30.48	34.85	41.08
NHP050-010-BS	50	30.48	34.85	41.08
NHP050-020-BS	50	30.48	34.85	41.08
NHP068-000-BS	68	41.91	46.28	52.21
NHP068-020-BS	68	41.91	46.28	52.21