



TRI-BAND, DUAL POLARISED ANTENNA GSM900/GSM1800/UMTS 65°/16dBi TYPE: 1745

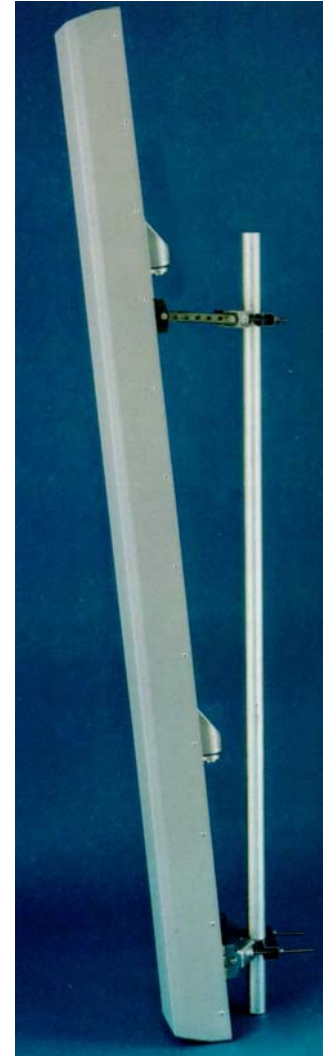
- ❑ TRI-BAND 3G APPLICATIONS
- ❑ INDEPENDENT DOWNTILT FOR EACH BAND
- ❑ SUPPRESSED SIDELOBES

The Tri-band design of this unit ensures coverage of the GSM900, GSM1800 & UMTS bands with one panel. Four output connectors are provided, allowing operators to split the UMTS band for amplification requirements at the masthead. The arrays within the radome have independent fixed electrical downtilt for each band, manufactured to customers' specifications.

The 1745 provides an ideal solution where there are space constraints at existing sites limiting the use of single band panels.

TECHNICAL SPECIFICATION

	GSM900	GSM1800	UMTS
Frequency Range	870-960MHz	1710-1880MHz	1900-2170MHz
Gain	15.5dBi	15.5dBi	16.5dBi
VSWR	1.4:1 max	1.4:1 max	1.4:1 max
Horizontal Beamwidth	65°	65°	65°
Vertical Beamwidth	8°	8°	6°
Fixed Electrical Downtilt	4°	4°	4°
Upper Sidelobe Suppression	>18dB	>18dB	>18dB
1 st Null Fill Below Horizon			<18dB
Front-to-Back Ratio	>25dB		
Isolation Between Ports	>30dB	>30dB	>30dB
Power Rating	200W		
Connectors	2 x 7/16" DIN GSM900/1800 2 x 7/16" DIN UMTS		
Dimensions (LxWxD)	2478 x 324 x 243 mm		
Operational Wind Speed	45m/s (160Km/h)		
Survival Wind Speed	56m/s (200Km/h)		
Max Wind Loading (Front)	1080 N @ 45m/s		
Weight	26kg		
Temperature Range	-40°C to +60°C		
Bracket downtilt	0°-10°		



THALES ANTENNAS LTD

First Avenue, Millbrook Trading Estate, Southampton SO15 0LJ United Kingdom

Tel: +44 (0) 2380 705705, Fax: +44 (0) 2380 701122, www.thalesantennas.com

Thales reserve the right to vary in detail from the description and specification in this publication. Issue: 6/01/1